

exhibitions

OPENING EXHIBITION

Photographic Discoveries: Recent Acquisitions

March 26–July 30, 2006
West Building, Ground Floor

Presenting approximately seventy works by such celebrated photographers as William Henry Fox Talbot, Eugène Atget, Alfred Stieglitz, Aleksandr Rodchenko, and Brassai, this exhibition highlights significant new Gallery acquisitions of photographs that were made during the first century of the medium's history, from the early 1840s to the 1940s.

Organized around the theme of discovery, the exhibition demonstrates how photographers sought to understand techniques for making pictures using this new medium, and how they came to recognize and exploit the ways in which photography infuses subjects such as portraiture, landscape, and still life with vitality and meaning.



Raphael, *Eight Apostles*, c. 1514.
National Gallery of Art, Washington,
Woodner Collection

Organized by the National Gallery
of Art, Washington.

Learn more: [www.nga.gov/
exhibitions/photodiscoveryinfo.htm](http://www.nga.gov/exhibitions/photodiscoveryinfo.htm)



Charles Marville, *Rue de la Bûcherie*,
1865/1869. National Gallery of
Art, Washington, Anonymous Gift

OPENING EXHIBITION

Master Drawings from the Woodner Collections

April 30–October 1, 2006
West Building, Central Gallery

Ian Woodner (1903–1990) formed one of the foremost private collections of old master and modern drawings in the United States. In 1991 Woodner's daughters, Dian and Andrea, placed the core drawings of the collection at the National Gallery of Art, in honor of their father's achievement as a collector. This exhibition, celebrating the fifteenth anniversary of the arrival of the Woodner drawings at the National Gallery, honors the ongoing generosity of Dian and Andrea Woodner, who have augmented the collection with gifts in addition to their initial donation.

Spanning more than five centuries of European draftsmanship, the show includes outstanding works by such great artists as Botticelli, Da Vinci, Dürer, Raphael, Rembrandt, Fragonard, Goya, Ingres, Degas, and Picasso.

Organized by the National Gallery
of Art, Washington.

Learn more: [www.nga.gov/
exhibitions/woodnerinfo.htm](http://www.nga.gov/exhibitions/woodnerinfo.htm)

CONTINUING EXHIBITION

Amorous Intrigues and Painterly Refinement: The Art of Frans van Mieris

Through May 21, 2006
West Building, Dutch Cabinet
Galleries

Praised by contemporaries as the most important of all Leiden *fijnschilders* (masters of fine painting), Frans van Mieris (1635–1681) is best known for his innovative interior scenes and elegant portraits. Although Van Mieris painted some allegories and portraits, most of his works are thoughtful yet light-hearted genre scenes, sometimes painted on copper, depicting charlatans, peasants, elegantly dressed ladies, soldiers, and pets in works that frequently explore themes of courtship and seduction.



Frans van Mieris, *The Art of Painting (Pictura)*, 1661. The J. Paul Getty
Museum, Los Angeles

Van Mieris' pictures were widely admired by contemporaries for their exquisite rendering of materials, and his works influenced many fellow painters including Johannes Vermeer. Intimate in scale, these masterpieces rarely measure more than fifteen square inches. The works were selected in consultation with Van Mieris scholar Otto Naumann, whose catalogue contribution appears alongside writings by other leading scholars.

Organized by the Royal Picture
Gallery Mauritshuis, The Hague, in
association with the National Gallery
of Art, Washington.

The exhibition is made possible by
anonymous donors to the National
Gallery of Art.

The exhibition is supported by an
indemnity from the Federal Council
on the Arts and the Humanities.

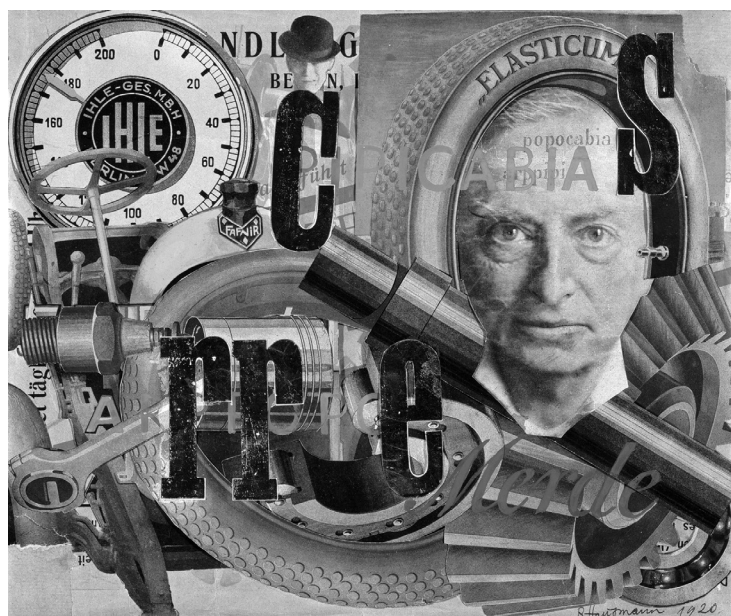
A twelve-minute introductory film
about Van Mieris' art, produced by
Bobcat TV for the Royal Picture
Gallery Mauritshuis, screens in the
West Building Micro Gallery and
Information Room. *In Dutch with
English subtitles.*

The film is made possible by Mr. and
Mrs. Thomas S. Kaplan.

Catalogue: hardcover, \$50

Learn more: [www.nga.gov/
exhibitions/vanmierisinfo.htm](http://www.nga.gov/exhibitions/vanmierisinfo.htm)

exhibitions



CONTINUING EXHIBITION

Dada

Through May 14, 2006
East Building, Mezzanine

Dada is the first major American museum survey of this influential avant-garde art movement. Responding to the disasters of World War I and an emerging modern media and machine culture, Dada artists proposed innovative strategies of art-making including collage, montage, assemblage, chance, readymades, performance, and media pranks, profoundly shaping the course of twentieth-century art. More than forty artists are represented, including Hans Arp, Marcel Duchamp, Max Ernst, George Grosz, Raoul Hausmann, John Heartfield, Hannah Höch, Francis Picabia, Man Ray, Hans Richter, Kurt Schwitters, Sophie Taeuber, and Tristan Tzara.

The exhibition presents the robust variety of Dada art that emerged between 1916 and 1924. More than four hundred works are organized around the movement's major centers of Zurich, Berlin, Hannover, Cologne, New York, and Paris. Aspects of the exhibition's design have been drawn from historical installations including the First International Dada Fair in Berlin, where slogans were displayed among the works; Schwitters' *Merzbau*, a large collage structure originally created in his home in Hannover; and Duchamp's New York studio, where his readymades were chaotically arranged.

Raoul Hausmann, *Elasticum*, 1920.
Galerie Berinson, Berlin/UBU Gallery, New York © 2005 Raoul Hausmann/
Artists Rights Society (ARS), New York/ADAGP, Paris

A brief silent film composed of documentary footage from World War I screens continuously at the entrance to the exhibition. With images of modern weaponry, gas masks, and brutalities of war, the film provides a historical context for the exhibition.

Organized by the National Gallery of Art, Washington, and the Centre Pompidou, Paris, in collaboration with The Museum of Modern Art, New York.

The exhibition is made possible through the generous support of the Anna-Maria and Stephen Kellen Foundation and the Catherine B. Reynolds Foundation.

Additional support for the exhibition has been provided by the Annenberg Foundation and Thomas G. Klarner.

The brochure is made possible by Aaron and Barbara Levine and Pro Helvetia Arts Council of Switzerland.

The film is made possible by the HRH Foundation.

The exhibition is supported by an indemnity from the Federal Council on the Arts and the Humanities.

Catalogue: hardcover, \$65; softcover, \$40

Learn more: www.nga.gov/exhibitions/dadainfo.htm

CLOSING EXHIBITION

Audubon's Dream Realized: Selections from *The Birds of America*

Through March 26, 2006
West Building, Central Gallery

John James Audubon (1785–1851) produced some of the most beautiful and lifelike depictions of birds ever created. This exhibition presents one of the artist's oil paintings—the superb *Osprey and Weakfish* (1829), a new gift to the Gallery from Richard Mellon Scaife—as well as fifty of the artist's hand-colored etchings selected from the Gallery's early edition of *The Birds of America* (1827–1838), one of only two known complete sets preserved in their original, unbound states.

Some of the volume's most celebrated and outstanding prints are also on view, including *American Flamingo* (1838) and *Carolina Parrot* (1827).

In conjunction with the National Gallery of Art division of education, the Audubon Naturalist Society in Chevy Chase, MD, is offering bird-watching walks on March 18 and April 22 to view birds portrayed by Audubon. To register, call (301) 652-9188, ext. 10.

Organized by the National Gallery of Art, Washington.

This exhibition is made possible by General Dynamics.

Learn more: www.nga.gov/exhibitions/auduboninfo.htm



Robert Havell after John James Audubon, *Iceland or Jer Falcon*, 1837.
National Gallery of Art, Washington, Gift of Mrs. Walter B. James



Paul Cézanne, *Gardanne*, c. 1886.
Brooklyn Museum, Ella C. Woodward Memorial Fund and the Alfred T. White Memorial Fund

CONTINUING EXHIBITION

Cézanne in Provence

Through May 7, 2006
West Building, Main Floor

The National Gallery of Art is the premiere venue for the principal international exhibition marking 2006 as the centenary of the death of Paul Cézanne (1839–1906), one of the greatest and most influential artists of the late nineteenth and early twentieth centuries.

This major exhibition of 117 of his greatest oil paintings and watercolors is the first to explore his complex emotional engagement with his native Provence through some of his most original and compelling landscapes; penetrating portraits of friends, employees, and family members; and paintings from the monumental series known as the *Bathers*. Works depicting such scenes as Cézanne's family home of Jas de Bouffan, Montagne Sainte-Victoire, the Mediterranean coast at L'Estaque, the dramatic quarry at Bibémus, and his famous studio at Les Lauves are on loan from public and private collections throughout Europe and the United States.

The exhibition also launches the yearlong celebration "Cézanne 2006" in the United States and France. Aix-en-Provence, Cézanne's city of birth, celebrates the centennial with numerous events, including the reopening of the Musée Granet, one of France's top regional museums, where the exhibition will be on view June 9 through September 17, 2006. Several key sites including the Jas de Bouffan, the Bibémus quarry, and the studio at Les Lauves will open to the public.

The exhibition is a tribute to the memory of the late, preeminent Cézanne scholar John Rewald. In studying the sites in Provence and their significance for Cézanne, the exhibition's organizers benefited from Rewald's Cézanne's papers in the Gallery Archives and the presence of the original site photographs in the National Gallery of Art Library Image Collections.

Organized by the National Gallery of Art, Washington, the Musée Granet and the Communauté du Pays d'Aix, Aix-en-Provence, and the Réunion des musées nationaux, Paris.

This exhibition is made possible by a generous grant from the DaimlerChrysler Corporation Fund.

The exhibition is supported by an indemnity from the Federal Council on the Arts and the Humanities.

Catalogue: hardcover, \$60; softcover, \$45

Learn more: www.nga.gov/exhibitions/cezanneinfo.htm

UPCOMING EXHIBITIONS

Charles Sheeler: Across Media

May 7–August 27, 2006
www.nga.gov/exhibitions/sheelerinfo.htm

The Poetry of Light: Venetian Drawings from the National Gallery of Art

May 21–October 1, 2006
www.nga.gov/exhibitions/venetianinfo.htm

Bellini, Giorgione, Titian, and the Renaissance of Venetian Painting

June 18–September 17, 2006
www.nga.gov/exhibitions/renaissanceinfo.htm

Henri Rousseau: Jungles in Paris

July 16–October 15, 2006
www.nga.gov/exhibitions/rousseauinfo.htm

calendar

MARCH

1 WEDNESDAY

1:00 **Gallery Talk** *Reading the Easter Story in Art* (wb)
2:15 **Gallery Talk** *Introductory Slide Overview: Cézanne in Provence* (wblh)

2 THURSDAY

10:15 **Gallery Talk** *Introductory Slide Overview: Cézanne in Provence* (wblh)
12:00 **Gallery Talk** *Amorous Intrigues and Painterly Refinement: The Art of Frans van Mieris* (wb)

3 FRIDAY

12:00 **Gallery Talk** *Amorous Intrigues and Painterly Refinement: The Art of Frans van Mieris* (wb)
2:15 **Gallery Talk** *Introductory Slide Overview: Cézanne in Provence* (wblh)
6:30 **Youth Film Fest** *Mad Hot Ballroom* (eba)

4 SATURDAY

10:15 **Gallery Talk** *Introductory Slide Overview: Cézanne in Provence* (wblh)
12:00 **Gallery Talk** *Amorous Intrigues and Painterly Refinement: The Art of Frans van Mieris* (wb)
Youth Film Fest *Hana and Alice* (eba)

5 SUNDAY

1:00 **Gallery Talk** *Reading the Easter Story in Art* (wb)
2:00 **Lecture with Film and Music** *The Return to Unreason: The Meaningful Nonsense of Dada Film and Music* with Martin Marks and the Aardett Ensemble (eba)
6:30 **Film and Concert** Dada cinema and music with Martin Marks and the Aardett Ensemble (eba)

6 MONDAY

1:00 **Gallery Talk** *George Caleb Bingham's "The Jolly Flatboatmen"* (wb)

7 TUESDAY

10:15 **Gallery Talk** *Introductory Slide Overview: Cézanne in Provence* (wblh)
10:30 **Youth Film Fest** *The Thousand-Year Fire* (eba)
12:00 **Gallery Talk** *Amorous Intrigues and Painterly Refinement: The Art of Frans van Mieris* (wb)
2:00 **Gallery Talk** *Dada in Berlin* (eb)
2:00 **Gallery Talk** *George Caleb Bingham's "The Jolly Flatboatmen"* (wb)

8 WEDNESDAY

10:30 **Youth Film Fest** *Oseam* (eba)
1:00 **Gallery Talk** *Reading the Easter Story in Art* (wb)
2:00 **Gallery Talk** *Making Their Mark: Contemporary Women Artists* (eb)
2:15 **Gallery Talk** *Introductory Slide Overview: Cézanne in Provence* (wblh)
2:15 **Gallery Talk** *Introductory Slide Overview: Cézanne in Provence* (wblh)
9 **THURSDAY**
10:15 **Gallery Talk** *Introductory Slide Overview: Cézanne in Provence* (wblh)
10:30 **Youth Film Fest** *Bluebird* (eba)
12:00 **Gallery Talk** *Amorous Intrigues and Painterly Refinement: The Art of Frans van Mieris* (wb)
1:00 **Gallery Talk** *Dada in Berlin* (eb)
11 **FRIDAY**
10:30 **Youth Film Fest** *Strings* (eba)
1:00 **Gallery Talk** *Reading the Easter Story in Art* (wb)
2:15 **Gallery Talk** *Introductory Slide Overview: Cézanne in Provence* (wblh)
6:30 **Youth Film Fest** *Bluebird* (eba)

See listings under **Guided Tours** for daily tours of the collections and foreign language tours.
Programs subject to change. For up-to-date information, visit our Web site: www.nga.gov.

11 SATURDAY

12:00 **Gallery Talk** *George Caleb Bingham's "The Jolly Flatboatmen"* (wb)
Youth Film Fest *Strings* (eba)
1:00 **Gallery Talk** *Dada in Berlin* (eb)
2:00 **Film** Japanese Master Mikio Naruse: *Wife, Be Like a Rose!* (eba)
2:15 **Gallery Talk** *Introductory Slide Overview: Cézanne in Provence* (wblh)
4:30 **Film and Concert** Dada cinema and music with the Alloy Orchestra (eba)

12 SUNDAY

11:30 **Youth Film Fest** *Oseam* (eba)
12:00 **Gallery Talk** *Making Their Mark: Contemporary Women Artists* (eb)
2:00 **Lecture Dada: Man Ray in Paris (eba)
6:30 **Film and Concert** Dada cinema and music with the Alloy Orchestra (eba)**

13 MONDAY

12:00 **Gallery Talk** *Spanish Sainly Portraiture* (wb)
12:10 **Lecture** *The Likeness That Moved the Pope to Tears? The Conservation of the Gallery's Bust of "Lorenzo de' Medici"* (ebsa)
1:10 **Lecture** *The Likeness That Moved the Pope to Tears? The Conservation of the Gallery's Bust of "Lorenzo de' Medici"* (ebsa)

14 TUESDAY

10:15 **Gallery Talk** *Introductory Slide Overview: Cézanne in Provence* (wblh)
12:00 **Gallery Talk** *Making Their Mark: Contemporary Women Artists* (eb)
1:00 **Gallery Talk** *George Caleb Bingham's "The Jolly Flatboatmen"* (wb)

15 WEDNESDAY

2:00 **Gallery Talk** *Ailsa Mellon Bruce's Small French Paintings from the Time of Cézanne* (eb)
2:15 **Gallery Talk** *Introductory Slide Overview: Cézanne in Provence* (wblh)

16 THURSDAY

10:15 **Gallery Talk** *Introductory Slide Overview: Cézanne in Provence* (wblh)
1:00 **Gallery Talk** *Dada in Berlin* (eb)

17 FRIDAY

2:15 **Gallery Talk** *Introductory Slide Overview: Cézanne in Provence* (wblh)
18 **SATURDAY**
10:15 **Gallery Talk** *Introductory Slide Overview: Cézanne in Provence* (wblh)
2:00 **Film** Japanese Master Mikio Naruse: *When a Woman Ascends the Stairs* (eba)
4:15 **Film** Japanese Master Mikio Naruse: *Summer Clouds* (eba)

19 SUNDAY

11:30 **Children's Film** *March of the Penguins* (eba)
Family Activity Stories in Art: *A Blue Butterfly* (wb)
12:00 **Gallery Talk** *Spanish Sainly Portraiture* (wb)
1:00 **Family Activity** Stories in Art: *A Blue Butterfly* (wb)
2:00 **Lecture** *Marcel Duchamp and the Great American Thing* (eba)
4:30 **Film** *White Diamond* (eba)
6:30 **Concert** Egidius Kwartet (wgc)

20 MONDAY

12:00 **Gallery Talk** *Spanish Sainly Portraiture* (wb)
21 **TUESDAY**
10:15 **Gallery Talk** *Introductory Slide Overview: Cézanne in Provence* (wblh)
2:00 **Gallery Talk** *Ailsa Mellon Bruce's Small French Paintings from the Time of Cézanne* (eb)

22 WEDNESDAY

1:00 **Gallery Talk** *Making Their Mark: Contemporary Women Artists* (eb)
2:15 **Gallery Talk** *Introductory Slide Overview: Cézanne in Provence* (wblh)

23 THURSDAY

10:15 **Gallery Talk** *Introductory Slide Overview: Cézanne in Provence* (wblh)
1:00 **Gallery Talk** *Dada in Berlin* (eb)
24 **FRIDAY**
12:00 **Gallery Talk** *Picasso's "Still Life" from 1918* (eb)
2:15 **Gallery Talk** *Introductory Slide Overview: Cézanne in Provence* (wblh)

25 SATURDAY

10:15 **Gallery Talk** *Introductory Slide Overview: Cézanne in Provence* (wblh)
10:30 **Children's Film** *The Story of the Weeping Camel* (eba)
12:00 **Gallery Talk** *Picasso's "Still Life" from 1918* (eb)
2:00 **Film** *I Build the Towers: The Life and Work of Sam Rodia* (eba)
4:30 **Film** Documentary Films of Christian Frei: *War Photographer* (eba)

26 SUNDAY

11:30 **Children's Film** *March of the Penguins* (eba)
12:00 **Gallery Talk** *Picasso's "Still Life" from 1918* (eb)
2:00 **Lecture** *Cézanne: Impressionist?* (eba)
4:30 **Film** Documentary Films of Christian Frei: *The Giant Buddha* (eba)
6:30 **Concert** Rachel Barton Pine (wgc)

27 MONDAY

12:00 **Gallery Talk** *Picasso's "Still Life" from 1918* (eb)
12:10 **Lecture** *Jasper Johns and Zen: Postwar Cultural Politics in Global Perspective* (ebsa)
1:10 **Lecture** *Jasper Johns and Zen: Postwar Cultural Politics in Global Perspective* (ebsa)

28 TUESDAY

10:15 **Gallery Talk** *Introductory Slide Overview: Cézanne in Provence* (wblh)
11:00 **Gallery Talk** *Picasso's "Still Life" from 1918* (eb)
12:00 **Gallery Talk** *Dada: An Overview* (eb)

29 WEDNESDAY

1:00 **Gallery Talk** *The Art of Fresco: Bernardino Luini's Procris and Cephalus* (wb)
2:15 **Gallery Talk** *Introductory Slide Overview: Cézanne in Provence* (wblh)

30 THURSDAY

10:15 **Gallery Talk** *Introductory Slide Overview: Cézanne in Provence* (wblh)
12:00 **Gallery Talk** *Cézanne's Circle: Artists, Family, Friends* (wb)
1:00 **Gallery Talk** *Dada: An Overview* (eb)

31 FRIDAY

1:00 **Gallery Talk** *Dada: An Overview* (eb)

calendar

A P R I L



Charlie Chaplin appears in *Shoulder Arms* (1918) on April 2 as part of the series *Dada and World War I*

1 SATURDAY
1:00 **Gallery Talk** *Dada: An Overview* (eb)
2:30 **Film** Japanese Master Mikio Naruse: *Daughters, Wives, and a Mother* (eba)

2 SUNDAY
1:00 **Gallery Talk** *The Art of Fresco: Bernardino Luini's Procris and Cephalus* (wb)
2:00 **Film** Dada and World War I series (eba)
4:30 **Film** The World of Billy Wilder series (eba)
6:30 **Concert** Kronos Quartet (eba)

3 MONDAY
2:00 **Gallery Talk** *Ailsa Mellon Bruce's Small French Paintings from the Time of Cézanne* (eb)

Guide to Locations
eb East Building Art Information Desk
eba East Building Auditorium
ebsa East Building Small Auditorium
wb West Building Rotunda
wblh West Building Lecture Hall
wgc West Building, West Garden Court
sg Sculpture Garden
sgp Sculpture Garden Pavilion Café

See listings under **Guided Tours** for daily tours of the collections and foreign language tours.

Programs subject to change. For up-to-date information, visit our Web site: www.nga.gov.

4 TUESDAY
10:15 **Gallery Talk** *Introductory Slide Overview: Cézanne in Provence* (wblh)
12:00 **Gallery Talk** *Cézanne's American Contemporaries: Landscape Painting in the Nineteenth Century* (wb)
1:00 **Gallery Talk** *The Art of Fresco: Bernardino Luini's Procris and Cephalus* (wb)
2:00 **Gallery Talk** *Dada in New York* (eb)

5 WEDNESDAY
12:30 **Film** *Cézanne in Provence* (eba)
1:00 **Gallery Talk** *Dada: An Overview* (eb)
2:15 **Gallery Talk** *Introductory Slide Overview: Cézanne in Provence* (wblh)

6 THURSDAY
10:15 **Gallery Talk** *Introductory Slide Overview: Cézanne in Provence* (wblh)
12:00 **Gallery Talk** *Cézanne's American Contemporaries: Landscape Painting in the Nineteenth Century* (wb)
12:30 **Film** *Cézanne in Provence* (eba)
1:00 **Gallery Talk** *The Art of Fresco: Bernardino Luini's Procris and Cephalus* (wb)
2:00 **Gallery Talk** *Cézanne's Circle: Artists, Family, Friends* (wb)

7 FRIDAY
12:00 **Gallery Talk** *Cézanne's American Contemporaries: Landscape Painting in the Nineteenth Century* (wb)
12:30 **Film** *Cézanne in Provence* (eba)
2:15 **Gallery Talk** *Introductory Slide Overview: Cézanne in Provence* (wblh)

8 SATURDAY
10:15 **Gallery Talk** *Introductory Slide Overview: Cézanne in Provence* (wblh)
12:30 **Film** *Cézanne in Provence* (eba)
2:00 **Film** The World of Billy Wilder series (eba)

9 SUNDAY
12:00 **Gallery Talk** *Cézanne's American Contemporaries: Landscape Painting in the Nineteenth Century* (wb)
2:00 **Film** Dada and World War I series (eba)
4:30 **Film** The World of Billy Wilder series (eba)
6:30 **Concert** Eusia String Quartet (wgc)

10 MONDAY
12:10 **Lecture** *The First African American on a Public Monument? H. K. Brown's "negro... so truthfully rendered" (1853)* (ebsa)
1:10 **Lecture** *The First African American on a Public Monument? H. K. Brown's "negro... so truthfully rendered" (1853)* (ebsa)
2:00 **Gallery Talk** *Ailsa Mellon Bruce's Small French Paintings from the Time of Cézanne* (eb)

11 TUESDAY
10:15 **Gallery Talk** *Introductory Slide Overview: Cézanne in Provence* (wblh)
12:00 **Gallery Talk** *Cézanne's American Contemporaries: Landscape Painting in the Nineteenth Century* (wb)
2:00 **Gallery Talk** *Cézanne's Circle: Artists, Family, Friends* (wb)

12 WEDNESDAY
12:00 **Gallery Talk** *Dada in Cologne* (eb)
1:00 **Gallery Talk** *Dada: An Overview* (eb)
2:15 **Gallery Talk** *Introductory Slide Overview: Cézanne in Provence* (wblh)

13 THURSDAY
10:15 **Gallery Talk** *Introductory Slide Overview: Cézanne in Provence* (wblh)
12:30 **Film** *Cézanne in Provence* (eba)

14 FRIDAY
12:30 **Film** *Cézanne in Provence* (eba)
2:15 **Gallery Talk** *Introductory Slide Overview: Cézanne in Provence* (wblh)

15 SATURDAY
10:15 **Gallery Talk** *Introductory Slide Overview: Cézanne in Provence* (wblh)
12:00 **Gallery Talk** *Photographic Discoveries: Focus on Global Architecture* (wb)
12:30 **Film** The World of Billy Wilder series (eba)
3:00 **Film** Japanese Master Mikio Naruse series (eba)

16 SUNDAY
2:00 **Film** Dada and World War I series (eba)
4:30 **Film** Japanese Master Mikio Naruse series (eba)

17 MONDAY
12:00 **Gallery Talk** *Photographic Discoveries: Focus on Global Architecture* (wb)

18 TUESDAY
10:15 **Gallery Talk** *Introductory Slide Overview: Cézanne in Provence* (wblh)
12:00 **Gallery Talk** *Dada in Cologne* (eb)
1:00 **Gallery Talk** *New York, by Robert Henri, George Bellows, and John Sloan* (wb)

19 WEDNESDAY
10:15 **Gallery Talk** *Introductory Slide Overview: Cézanne in Provence* (wblh)
2:00 **Gallery Talk** *Ailsa Mellon Bruce's Small French Paintings from the Time of Cézanne* (eb)

20 THURSDAY
10:15 **Gallery Talk** *Introductory Slide Overview: Cézanne in Provence* (wblh)
12:00 **Gallery Talk** *Dada in Cologne* (eb)
12:30 **Film** *Sophie Taeuber* (eba)

21 FRIDAY
12:30 **Film** *Sophie Taeuber* (eba)
2:15 **Gallery Talk** *Introductory Slide Overview: Cézanne in Provence* (wblh)

22 SATURDAY
10:15 **Gallery Talk** *Introductory Slide Overview: Cézanne in Provence* (wblh)
10:30 **Children's Film** *My Brother Is a Dog* (eba)
12:00 **Gallery Talk** *Dada: An Overview* (eb)
12:30 **Film** The World of Billy Wilder series (eba)
1:00 **Gallery Talk** *New York, by Robert Henri, George Bellows, and John Sloan* (wb)
3:00 **Film** The World of Billy Wilder series (eba)

23 SUNDAY
11:30 **Children's Film** *My Brother Is a Dog* (eba)
12:00 **Gallery Talk** *Dada in Cologne* (eb)
1:00 **Family Activity** Workshop: *Making Faces* (wb)
2:00 **Lecture** *Man Ray, Dudley Murphy, and the Making of "Le Ballet mécanique"* (eba)
4:30 **Film** Japanese Master Mikio Naruse series (eba)
6:30 **Concert** Piotr Andrszewski (wgc)

24 MONDAY
12:00 **Gallery Talk** *Dada in Cologne* (eb)
12:10 **Lecture** *Paul Cézanne, Provençal "Peintre-Ouvrier"* (ebsa)
1:00 **Gallery Talk** *Photographic Discoveries: Focus on Global Architecture* (wb)
1:10 **Lecture** *Paul Cézanne, Provençal "Peintre-Ouvrier"* (ebsa)

25 TUESDAY
10:15 **Gallery Talk** *Introductory Slide Overview: Cézanne in Provence* (wblh)
12:00 **Gallery Talk** *Cézanne's Circle: Artists, Family, Friends* (wb)
1:00 **Gallery Talk** *New York, by Robert Henri, George Bellows, and John Sloan* (wb)

26 WEDNESDAY
12:00 **Gallery Talk** *Dada in New York* (eb)
12:30 **Film** *Sophie Taeuber* (eba)
2:15 **Gallery Talk** *Introductory Slide Overview: Cézanne in Provence* (wblh)

27 THURSDAY
10:15 **Gallery Talk** *Introductory Slide Overview: Cézanne in Provence* (wblh)
12:30 **Film** *Sophie Taeuber* (eba)
2:00 **Gallery Talk** *Ailsa Mellon Bruce's Small French Paintings from the Time of Cézanne* (eb)

28 FRIDAY
12:30 **Film** *Sophie Taeuber* (eba)
2:15 **Gallery Talk** *Introductory Slide Overview: Cézanne in Provence* (wblh)

29 SATURDAY
10:15 **Gallery Talk** *Introductory Slide Overview: Cézanne in Provence* (wblh)
2:00 **Film** Japanese Master Mikio Naruse series (eba)
4:30 **Concert** Ute Lempert (eba)

30 SUNDAY
11:30 **Family Activity** Stories in Art: *Elemenopo* (wb)
1:00 **Family Activity** Stories in Art: *Elemenopo* (wb)
2:00 **Film** Dada and World War I series (eba)
4:30 **Film** *On the Road; Return of the Poet* (eba)
6:30 **Concert** Modern Musick (wgc)

programs

Guided Tours

West Building Rotunda (wb) or East Building Art Information Desk (eb)
For details: www.nga.gov/programs/tours.htm

Introductory Tours

1900 to Now: An Introduction to the East Building Collection (eb)
Monday–Friday at 10:30 and 1:30
Saturday and Sunday at 11:30 and 3:30

American Collection (wb)
Daily at 2:30

Early Italian to Early Modern: An Introduction to the West Building Collection (wb)
Monday–Friday at 11:30
Saturday at 10:30 and 12:30
Sunday at 12:30 and 4:30

Italian Renaissance Collection (wb)
Monday–Friday at 12:30
Saturday and Sunday at 1:30

Nineteenth-Century French Collection (wb)
Monday, Wednesday, and Friday at 1:30
Saturday and Sunday at 3:30

Points of View: The Painter's Choices (wb)
Monday–Friday at 3:30

New Tour

The Sculpture Galleries (wb)
Tuesday and Thursday at 1:30
Saturday and Sunday at 11:30

Foreign Language Tours

American art in French: March 6 and April 3 at 12:00 (wb)
American art in Spanish: March 24 and April 28 at 12:00 (wb)
Chinese: March 15 and April 12 at 12:00 (wb) and 2:00 (eb)
French: March 20 and April 17 at 12:00 (wb) and 2:00 (eb)
German: March 21 and 25; April 18 and 22 at 12:00 (wb) and 2:00 (eb)
Italian: March 14 and 18; April 11 and 15 at 12:00 (wb) and 2:00 (eb)
Japanese: March 4, 9, 14, and 23; April 1, 6, 11, and 20 at 12:00 (wb) and 2:00 (eb)
Russian: March 11 and April 8 at 12:00 (wb) and 2:00 (eb)
Spanish: March 7, 16, and 18; April 4, 13, and 15 at 12:00 (wb) and 2:00 (eb)

Gallery Talks

West Building Rotunda (wb), East Building Art Information Desk (eb), or West Building Lecture Hall (wblh)
For details: www.nga.gov/programs/galtalks.htm

Introducing Art

Reading the Easter Story in Art (50 mins.). Philip Leonard. March 1, 5, 8, and 10 at 1:00 (wb)

Special Exhibitions

Introductory Slide Overview: Cézanne in Provence (50 mins.)
Division of education staff. March 2, 4, 7, 9, 14, 16, 18, 21, 23, 25, 28, and 30 and April 4, 6, 8, 11, 13, 15, 18, 19, 20, 22, 25, 27, and 29 at 10:15; March 1, 3, 8, 10, 11, 15, 17, 22, 24, and 29 and April 5, 7, 12, 14, 21, 26, and 28 at 2:15 (wblh)

Amorous Intrigues and Painterly Refinement: The Art of Frans van Mieris (50 mins.). Philip Leonard. March 2, 3, 4, 7, and 9 at 12:00 (wb)

Dada in Berlin (50 mins.). Lynn Matheny. March 7, 9, 11, 16, and 23 at 1:00 (eb)

Dada: An Overview (60 mins.). Sally Shelburne, David Gariff, and Christopher With. March 28 and April 22 at 12:00; March 30 and 31, and April 1, 5, and 12 at 1:00 (eb)

Cézanne's American Contemporaries: Landscape Painting in the Nineteenth Century (60 mins.). Wilford W. Scott. April 4, 6, 7, 9, and 11 at 12:00 (wb)

Dada in New York (50 mins.). Sally Shelburne. April 4 at 2:00; April 26 at 12:00 (eb)

Dada in Cologne (50 mins.). Christopher With. April 12, 18, 20, 23, and 24 at 12:00 (eb)

Photographic Discoveries: Focus on Global Architecture (50 mins.). Anna O. Marley, graduate student lecturer. April 15 and 17 at 12:00; April 24 at 1:00 (wb)

Focus: The Collection

George Caleb Bingham's "The Jolly Flatboatmen" (20 mins.). Kimberly Curtiss, graduate student lecturer. March 7 at 2:00; March 11 at 12:00; March 14 at 1:00 (wb)

Making Their Mark: Contemporary Women Artists (50 mins.). Sally Shelburne. March 8 at 2:00; March 12 and 14 at 12:00; March 22 at 1:00 (eb)

Spanish Sainly Portraiture (50 mins.). Anna O. Marley, graduate student lecturer. March 13, 19, and 20 at 12:00 (wb)

Ailsa Mellon Bruce's Small French Paintings from the Time of Cézanne (50 mins.). Dianne Stephens. March 15 and 21 and April 3, 10, 19, and 27 at 2:00 (eb)

Picasso's "Still Life" from 1918 (50 mins.). Diane Arkin. March 24, 25, 26 and 27 at 12:00; March 28 at 11:00 (eb)

The Art of Fresco: Bernardino Luini's Procris and Cephalus (50 mins.). David Gariff. March 29 and April 2, 4, and 6 at 1:00 (wb)

New York, by Robert Henri, George Bellows, and John Sloan (50 mins.). Kimberly Curtiss, graduate student lecturer. April 18, 22, and 25 at 1:00 (wb)

Lectures

East Building Auditorium (eba) / 2:00
For details: www.nga.gov/programs/lecture.htm

Weekend Lectures

March 5: *The Return to Unreason: The Meaningful Nonsense of Dada Film and Music*. Martin Marks, senior lecturer in music, Massachusetts Institute of Technology

March 12: *Dada: Man Ray in Paris*. Susan Laxton, assistant professor of modern and contemporary art, Barnard College

March 19: *Marcel Duchamp and the Great American Thing*. Francis M. Naumann, independent scholar and author of *New York Dada and Making Mischief*

March 26: *Cézanne: Impressionist? John House, Walter H. Annenberg Professor, Courtauld Institute of Art, London*

April 23: *Man Ray, Dudley Murphy, and the Making of "Le Ballet mécanique"*. Susan Delson, independent scholar, New York

Works in Progress

East Building Small Auditorium (ebsa)
Mondays, 12:10 and 1:10

March 13: *The Likeness That Moved the Pope to Tears? The Conservation of the Gallery's Bust of "Lorenzo de' Medici"*. Michael Belman, Andrew W. Mellon Fellow, National Gallery of Art

March 27: *Jasper Johns and Zen: Postwar Cultural Politics in Global Perspective*. Seth McCormick, graduate curatorial intern, National Gallery of Art

April 10: *The First African American on a Public Monument? H. K. Brown's "negro... so truthfully rendered" (1853)*. Karen Y. Lemmey, Andrew W. Mellon Curatorial Fellow, National Gallery of Art

April 24: *Paul Cézanne, Provençal "Peintre-Ouvrier"*. Benedict Leca, Andrew W. Mellon Curatorial Fellow, National Gallery of Art

Gallery Concerts

West Building, West Garden Court (wgc) or East Building Auditorium (eba) at 4:30 or 6:30 / First-come, first-seated beginning at 6:00 / Entry at Sixth Street until 6:30 / For details: (202) 842-6941 or www.nga.gov/programs/music.htm

Cézanne in Provence

Narrated by Gallery director Earl A. Powell III, this tour includes commentary by Philip Conisbee, senior curator of European paintings, National Gallery of Art; Mary Tompkins Lewis, visiting associate professor of fine arts, Trinity College, Hartford, Connecticut; and Joseph J. Rishel, curator of European Painting before 1900, Philadelphia Museum of Art.

March 5: Martin Marks and the Aardett Ensemble; music by Satie and others, performed with Dada and avant-garde films (2:00 and 6:30, eba)

March 11: Alloy Orchestra; original music for Dada and avant-garde films (4:30, eba)

March 12: Alloy Orchestra; original music for Dada and avant-garde films (6:30, eba)

March 19: Egidius Kwartet; music by Susato and other Dutch composers in honor of *Amorous Intrigues and Painterly Refinement: The Art of Frans van Mieris* (wgc)

March 26: Rachel Barton Pine, violinist; Matthew Hagle, pianist; music by Biber, Mozart, Schumann, Corigliano, and others (wgc)

April 2: Kronos Quartet with Wu Man, pipa player; music by Zorn, Johnson, Burman, Gordon, and Riley (6:30, eba)

April 9: Eusia String Quartet with Fauré, Debussy, and Vajda in honor of *Cézanne in Provence* (wgc)

April 23: Piotr Andrszewski, pianist; music by Mozart, Szymanowski, and J.S. Bach (wgc)

April 29: Ute Lempert, vocalist; cabaret concert in honor of *Dada* (4:30, eba)

April 30: Modern Musick; music by Locke, Purcell, Vivaldi, and others, performed on period instruments (wgc)

Audio Programs

West and East Buildings, exhibition entrances / Rental: \$5 per tour / For details: www.nga.gov/programs/audio.htm

programs

Family Activities

For details: (202) 789-3030 or www.nga.gov/programs/family.htm
Children must be accompanied by an adult

Family Workshop

West Building Rotunda (wb)
Required online registration begins April 10

Making Faces
April 23, May 7, and May 14
1:00–3:00
Ages 8–12

Investigate the many ways artists make portraits while sketching in the galleries. Both children and adults will learn techniques for drawing faces. Led by artist and educator Clare Grizzard.

Stories in Art

West Building Rotunda / Ages 4–7
No registration required

A Blue Butterfly
By Bijou Le Tord
March 19 at 11:30 and 1:00

After listening to this story about Claude Monet, participants will look at French impressionist paintings and create their own colorful works of art.

Elemenopoe
By Harriet Ziefert
Illustrated by Donald Saaf
April 30 at 11:30 and 1:00

After reading this story about an artistic cat, participants will look at self-portraits and then create their own portraits to take home.

Family and Youth Programs are made possible in part by the generosity of the Prince Charitable Trusts.

Additional support for 2006 has been provided by The Morris and Gwen-dolyn Cafritz Foundation.

Children's Film Program

East Building Auditorium (eba)
First come, first seated / For details: www.nga.gov/programs/flmchild.htm

March of the Penguins
(Luc Jacquet, National Geographic Feature Films/Warner Independent Pictures, 2005, 80 mins.)
March 19 and 26 at 11:30
Ages 10 and up

Emperor penguins brave icy winds, freezing temperatures, and starvation as they trek across the Antarctic on an annual journey to their breeding grounds for mating season. Narrated by Morgan Freeman, this documentary tells the incredible story of the penguins' life cycle.

The Story of the Weeping Camel
(Byambasuren Davaa and Luigi Falorni, Germany, 2003, 93 mins.)
March 25 at 10:30
Ages 10 and up

Follow a family of nomadic shepherds in the Gobi Desert, South Mongolia, as they assist in the births of their camel herd. When a rare white calf is born, the mother rejects the newborn and denies it the milk needed to survive. Find out how the shepherds help the calf. *In Mongolian with English subtitles.*

My Brother Is a Dog
(Peter Timm, Germany, 2004, 86 mins.)
Washington premiere
April 22 at 10:30 / April 23 at 11:30
Ages 8 and up

Be careful what you wish for! When Marietta receives a magic rock on her birthday, she wishes for a pet dog. She's absolutely thrilled when a sweet little dog suddenly appears on her couch, until she discovers that her pesky little brother Tobias is missing. He's the dog! Will she be able to reverse the spell? *In German with English subtitles.*

The Children's Film Program is made possible by the generous support of washingtonpost.com.

Youth Film Fest

East Building Auditorium (eba)
First come, first seated / For details: (202) 842-6252 or www.nga.gov/education/hsprog.htm

Mad Hot Ballroom
(Marilyn Agrelo, U.S., 2005, 105 mins.)
March 3 at 6:30
Ages 15 and up

This documentary chronicles three teams of New York City fifth-graders as they practice for a citywide ballroom dancing competition. As they transform from reluctant participants to determined competitors, the students reveal aspects of themselves and their world. *In English and Spanish with English subtitles.*

Hana & Alice
(Shunji Iwai, Japan, 2004, 135 mins.)

March 4 at 12:00
Ages 15 and up

This comedy tells a tale of friendship, first love, and growing up. Hana and Alice, best friends since childhood, enter high school eager to meet boys. Hana's ploy to attract one particular boy begins with an inventive deception and sets off a hilarious chain reaction. *In Japanese with English subtitles.*

The Thousand-Year Fire
(Naoki Segi, Japan, 2004, 89 mins.)
March 7 at 10:30
Ages 12 and up

Grieving the loss of his parents, eleven-year-old Satoshi moves from Tokyo to a seaside town to live with his grandparents. There he participates in Hiwatashi, a ritual swim in the open sea. Those who accomplish the feat become members of the chosen circle permitted to watch over the holy fire of Chitosebi, which has burned perpetually for a thousand years. *In Japanese with English subtitles.*

Oseam
(Sung Baek-yeop, South Korea, 2003, 75 mins.)
March 8 at 10:30 / March 12 at 11:30
Ages 10 and up

With visually stunning, hand-drawn animation, this is the story of five-year-old Gilson traveling in search of his mother—who, he believes, will be found in the place where the wind starts. When Gilson and his blind older sister are met by Buddhist monks who take them in, their journey progresses from a physical search to a spiritual quest. *In Korean with English subtitles.*

Bluebird
(Mijke de Jong, the Netherlands, 2004, 79 mins.)
March 9 at 10:30 / March 10 at 6:30
Ages 15 and up

Thirteen-year-old Merel has a strong, caring relationship with her physically disabled younger brother. When she becomes the target of bullying, her suppressed emotions manifest themselves in uncharacteristic behavior. *Bluebird* is a sharply observed portrait of one girl's struggles with adversity and the friendships that sustain her. *In Dutch with English subtitles.*

Strings
(Anders Rønnow Klarlund, Denmark, 2004, 91 mins.)
March 10 at 10:30
March 11 at 12:00
Ages 15 and up

A virtuoso feat of puppeteering, this film envisages a mythical kingdom populated entirely by stringed puppets. Upon his father's dramatic death, young Hal Tara—the emperor of Hebalon—is forced to avenge him. An epic tale of adventure, *Strings* is bondage and liberation, love and war, identity, and destiny. *In English.*

Film Programs

For details: (202) 842-6799 or www.nga.gov/programs/film.htm

Japanese Master Mikio Naruse

Mikio Naruse (1905–1969) was a master of the classical Japanese cinema, whose restrained and reflective style place him squarely in the tradition of the *shomin-geki*, or contemporary plays about the lower middle classes.

The Japan Foundation and film historian James Quandt assembled the series, which is presented in Washington at the National Gallery of Art, the Freer Gallery of Art, and the American Film Institute.

White Diamond

Werner Herzog follows Graham Dorrington as he tests a new design for an airship over Guyana's dense equatorial rainforests, embracing his great theme of man versus nature. *Presented in association with the Environmental Film Festival.*

I Build the Tower: The Life and Work of Sam Rodia

Ed Landler's portrait of the Italian artisan immigrant who constructed the famous Los Angeles Watts Towers uses the simplest of materials and means. A discussion with Landler follows the film. *Presented in association with the Environmental Film Festival.*

Documentary Films of Christian Frei

On March 26, the Washington premiere of Swiss director and cinematographer Christian Frei's new feature documentary, *The Giant*

Buddhas (2005), explores the controversial Taliban-ordered destruction several years ago of Afghanistan's Bamiyan Buddhas. A revival of his Oscar-nominated *War Photographer* (2001), about the famed photojournalist James Nachtwey, precedes *The Giant Buddhas* on March 25. Christian Frei will be present.

Dada and World War I

A series of six programs presented on Sunday afternoons in April focuses on World War I, its history, and its aftermath. Organized in association with *Dada*, the series includes *J'accuse* (1919), *Paths of Glory* (1957), and a program of short films including Charlie Chaplin's *Shoulder Arms* (1918).

The World of Billy Wilder

Raconteur, art collector, and consummate critic, Austrian émigré auteur Billy Wilder crafted one of the most eloquent oeuvres in the history of Hollywood. On the centenary of his birth, the National Gallery of Art joins the American Film Institute in presenting a retrospective of his work in April and May that includes rare early films such as *Menschen am Sonntag*.

Cézanne in Provence

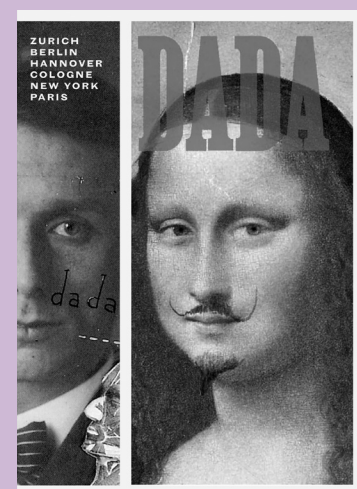
Cézanne in Provence chronicles the life and work of Paul Cézanne through his masterpieces showcased in the National Gallery of Art exhibition. This one-hour documentary was filmed in high definition (HDTV) by Emmy Award-winning director Jackson Frost.

Sophie Taeuber

A Swiss documentary portrait examines the life of painter and graphic designer Sophie Taeuber, the influential artist from Davos who joined the dadaists in Zurich and, in 1921, became the wife of Hans Arp.

Return of the Poet

The American premiere of a new feature documentary on Armenia's national folk poet Ashugh Jivani beautifully portrays a local sculptor creating a huge stone monument to the poet. As the soundtrack of the country's rich music plays, the immense sculpture tours Armenia's unspoiled landscapes on the back of a truck. *Return of the Poet* is preceded by Abbas Kiarostami's new short film *On the Road*.



Gallery Shops

Throughout the run of *Dada*, choose from spinning tops, stylish faux mustaches, word cubes, and an oversized letterpress; paper products such as make-your-own stationery and collage kits, solar graphics, notebooks, address books, postcards, calendars, and bookmarks; sterling bracelets with Dada slogans; mugs, posters, and a miniature reproduction of Marcel Duchamp's readymade *Roue de bicyclette* (Bicycle Wheel).

The lavishly illustrated five-hundred-page exhibition catalogue is available in hardcover (\$65) and softcover (\$40) editions.

West Building, Ground Floor

Stylish personal accessories, art-inspired items for the home, and framed and unframed reproductions of famous works of art in many sizes and formats including posters, postcards, and stationery are available.

Concourse Bookstore

Gallery exhibition catalogues, collection guides, and other publications complement this shop's extensive holdings of books, videos, and DVDs on art, design, architecture, and photography.

Concourse Children's Shop

Books, games, toys, and puzzles to delight the young and young at heart.

Pavilion Café Sculpture Garden

With a view of the Sculpture Garden, the Pavilion Café offers pizzas, sandwiches, salads, desserts, and full beverage service.

Monday–Saturday, 10:00–4:00
Sunday, 11:00–5:00

information

Ordering Information

To order from the Gallery Shops, call (202) 842-6002 or (800) 697-9350; fax (202) 789-3047; or e-mail mailorder@nga.gov. You may also visit the shops online at www.nga.gov/shop.

Restaurants

www.nga.gov/ginfo/cafes.htm

Terrace Café East Building, Upper Level

Overlooking the atrium and the entrance to the *Dada* exhibition, the Terrace Café offers a relaxing coffeehouse atmosphere with a selection of salads, sandwiches, and specialty drinks and desserts.

Sunday, 11:00–3:00

Cascade Café/Espresso & Gelato Bar East Building, Concourse

Cascade Café
Monday–Saturday, 11:00–3:00
Sunday, 11:00–4:00

The Cascade Café, with a view of the waterfall, offers soups, salads, specialty entrées, wood-fired pizzas, sandwiches, sushi, and freshly baked desserts.

Espresso & Gelato Bar
Monday–Saturday, 10:00–4:30
Sunday, 11:00–5:30

A full espresso bar offers freshly made gelato and sorbetto, panini, and specialty sweets.

Garden Café West Building, Ground Floor

Café Provençal
Through May 7, 2006

The Garden Café is transformed into a French-style bistro, offering an à la carte menu and buffet specially created by a chef from Paul Cézanne's beloved French countryside of Provence.

Monday–Saturday, 11:30–3:00
Sunday, 12:00–4:00
Concert menu available
Sunday, 4:00–6:00

Pavilion Café Sculpture Garden

With a view of the Sculpture Garden, the Pavilion Café offers pizzas, sandwiches, salads, desserts, and full beverage service.

Monday–Saturday, 10:00–4:00
Sunday, 11:00–5:00

Radio Program

This Week at the National Gallery with host Barbara Tempchin airs each Sunday morning at 10:43 on WGMS 103.5 FM in the Washington area and each Saturday afternoon at 12:55 on WBJC 91.5 FM in the Baltimore area.

Gallery Information

Admission

Admission to the Gallery, its Sculpture Garden, and its activities is free, except as noted.

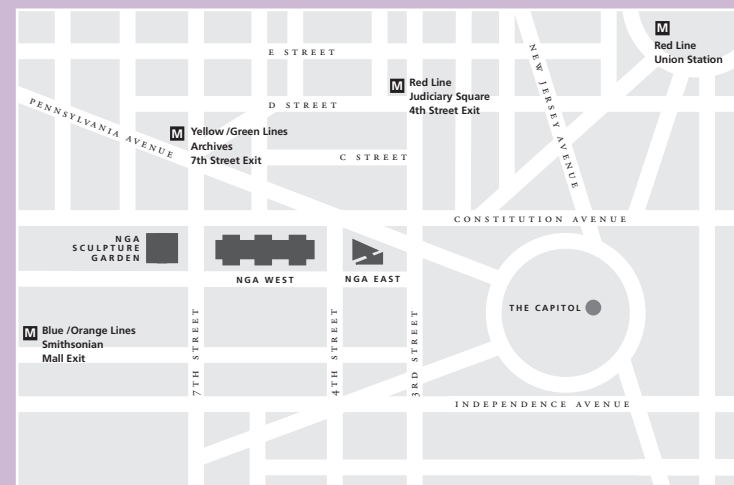
Security Check

Visitors are asked to present all bags for inspection as they enter the Gallery. Backpacks and parcels must be left in the checkrooms. No parcels larger than 17 x 26 inches are accepted in the checkrooms. Suitcases are permitted but must be x-rayed at the East or West Building entrances on Fourth Street before being accepted in the checkrooms.

The Collection

The National Gallery of Art, one of the world's preeminent museums, was created for the people of the United States of America by a joint resolution of Congress accepting the gift of financier, public servant, and art collector Andrew W. Mellon in 1937. European and American paintings, sculpture, works on paper, photographs, and decorative arts are displayed in the collection galleries and Sculpture Garden. Temporary exhibitions of art from countries and cultures throughout the world are presented on a regular basis.

Works of art on paper and photographs that are not on view may be seen by appointment on weekdays; call (202) 842-6380 for prints and drawings or (202) 842-6144 for photographs.



Library

library.nga.gov

The Gallery's library collection of more than 330,000 books and periodicals on the history, theory, and criticism of art and architecture emphasizes Western art from the Middle Ages to the present, and American art from the colonial era to the present. Adult researchers may gain access to the library by calling (202) 842-6511. The library is closed weekends and all federal holidays.

Location

The Gallery is located on Constitution Avenue between Third and Ninth Streets NW. Nearby Metro-rail stations are located at Judiciary Square (red line), Archives/Navy Memorial (yellow and green lines), and Smithsonian (blue and orange lines). Metrobus stops are located on Fourth Street, Seventh Street, and Pennsylvania Avenue.

Hours

Gallery
Monday–Saturday, 10:00–5:00
Sunday, 11:00–6:00

Sculpture Garden
Monday–Saturday, 10:00–5:00
Sunday, 11:00–6:00

Exhibition and General Information

Call (202) 737-4215 or visit the Web site at www.nga.gov. Call (202) 842-6176 for the Telecommunications Device for the Deaf (TDD).

Calendar

To access the calendar on the Web, go to www.nga.gov/ginfo/calendar.htm.

Call (202) 842-6662 or e-mail calendar@nga.gov to receive this free bimonthly calendar of events by mail.

Group Tours

Free one-hour tours for groups of twenty or more adults may be booked three weeks to four months in advance. Call (202) 842-6247.

Accessibility

Ramps for wheelchairs and strollers are located at the Sixth Street entrance to the West Building on Constitution Avenue NW and at the Fourth Street entrance to the East Building. Wheelchairs and strollers are available at all entrances. For information about access to public areas and galleries, refer to the *Map and Visitor's Guide* for the East and West Buildings at the Art Information Desks. Limited parking is available in front of the East Building for vehicles displaying the international symbol of accessibility (♿). The Sculpture Garden is accessible to those with disabilities. Call (202) 842-6690. Assistive listening devices are available on a free loan basis. For East Building Auditorium programming, visit the building's Art Information Desk. For West Building Lecture Hall programming, visit the Constitution Avenue entrance Art Information Desk.

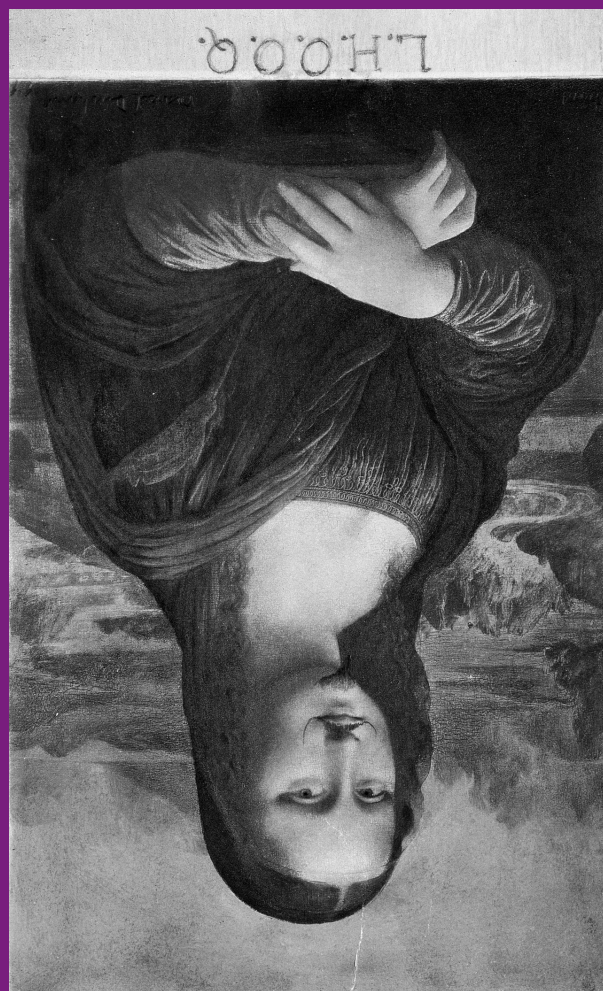
Sign language interpretation is available with three weeks' notice. Call (202) 842-6247 or TDD (202) 842-6176.

A wheelchair-accessible TDD has been installed at the public telephone adjacent to the stamp machine near the sales shop on the Concourse. Visit www.nga.gov/ginfo/disabled.htm for more information.

Over the next several years, sections of the collection of the National Gallery of Art will close for renovation. Check at the Art Information Desks for additional details or visit www.nga.gov/ginfo/renovation.htm.

Copyright © 2006 Board of Trustees, National Gallery of Art, Washington

march · april 2006 calendar



Marcel Duchamp, *L.H.O.O.Q.*,
1919, Private collection

Through May 14, 2006
East Building, Mezzanine

Dada

National
Gallery of Art,
Washington

National Gallery of Art
Sixth Street and Constitution Avenue NW
Washington, DC

Mailing address:
2000B South Club Drive
Landover, MD 20785

(202) 737-4215 • www.nga.gov

Non-Profit Organization
U.S. Postage
PAID
Washington, DC
Permit No. 9712

March · April

VISIT WWW.NGA.GOV/GINFO/GENINFO.HTM FOR THE MOST UP-TO-DATE CALENDAR OF EVENTS