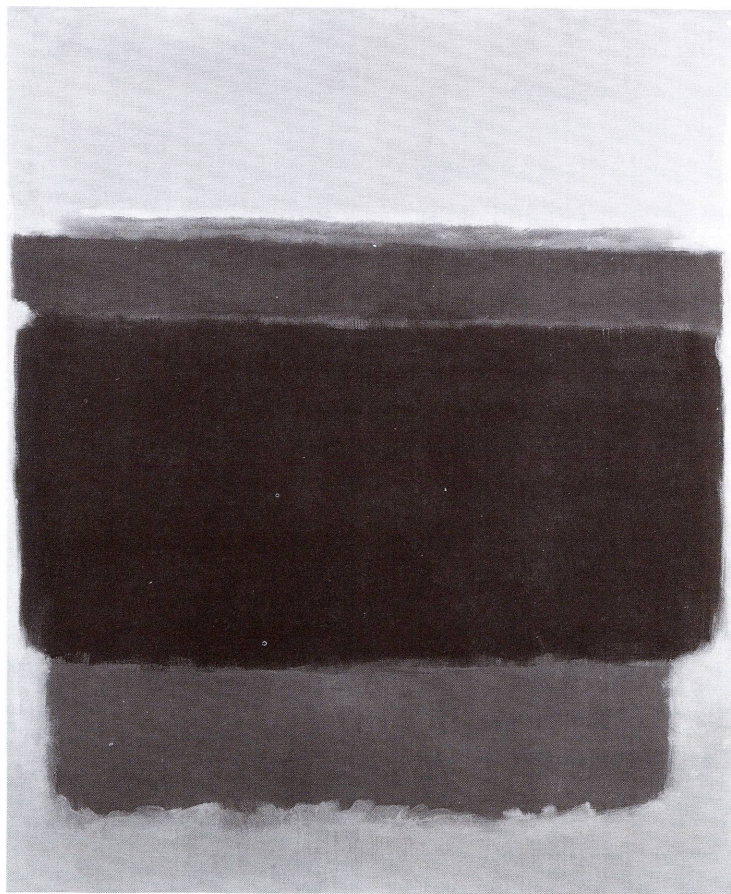


# exhibitions



CONTINUING EXHIBITION

## Mark Rothko

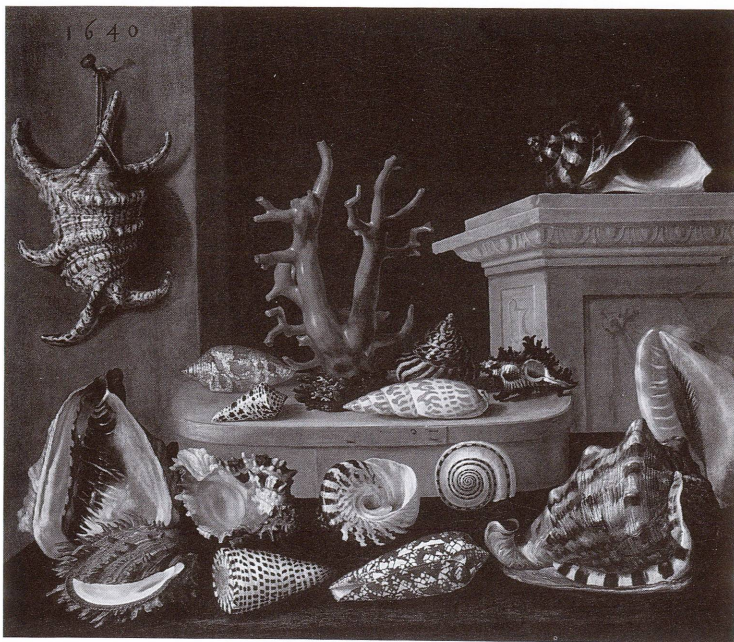
Through August 16, 1998  
East Building, concourse galleries

This is the first comprehensive American retrospective of Mark Rothko's work in twenty years, and it takes full advantage of a unique gift from The Mark Rothko Foundation to the National Gallery of Art, which constitutes the largest public repository of the artist's work. One hundred fourteen works on canvas and paper encompassing all phases of Rothko's career, from the 1930s to 1970, are on display, with an emphasis on the so-called surrealist and classic periods. Rothko's mature art emphasizes pure pictorial elements such as color, surface, proportion, and scale. His ambition for these commanding works was an expressive one, and their impact is often described in emotional and spiritual terms. A fully illustrated catalogue is available.

The exhibition is organized by the National Gallery of Art.

Sponsored by Mobil.

Mark Rothko, *Untitled*, 1949, National Gallery of Art, Washington, Gift of the Mark Rothko Foundation, 1986.



Jacques Linard, *Still Life of Shells*, 1640, Mr. and Mrs. Michal Hornstein, Montreal.

CONTINUING EXHIBITION

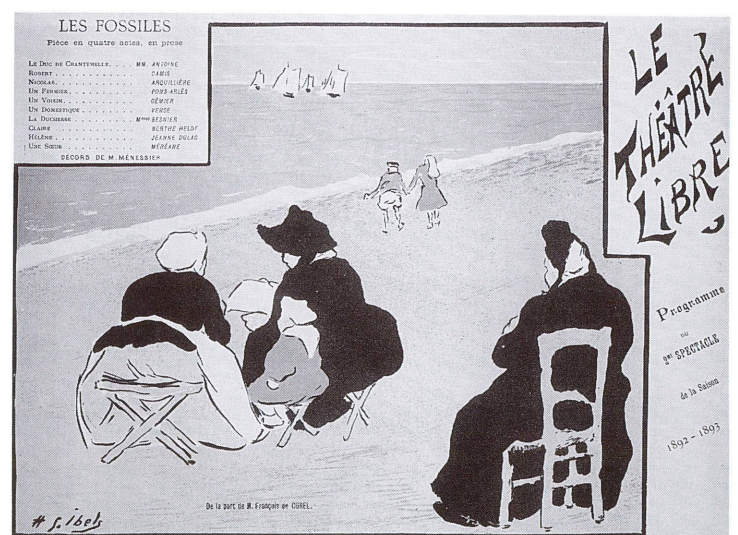
## A Collector's Cabinet

Through August 9, 1998  
West Building, main floor  
Dutch cabinet galleries

This exhibition creates the character of a seventeenth-century collector's cabinet—an intimately scaled room for displaying a private collection—with an assembly of artistic and natural objects chosen for pleasure and wonder. Dutch and Flemish artists excelled in creating exquisite, small works of art that were eagerly collected in The Netherlands. The galleries are densely hung with paintings, and display cases are devoted to objects such as bronze and ivory sculpture, commemorative medals, antique coins, jewelry, musical and scientific instruments, and exotic shells and coral. An illustrated catalogue accompanies the exhibition.

The exhibition is organized by the National Gallery of Art.

Shell Oil Company Foundation, on behalf of the employees of Shell Oil Company, is proud to make possible this presentation to the American people.



CONTINUING EXHIBITION

## Manet, Monet, and the Gare Saint-Lazare

Through September 20, 1998  
East Building, mezzanine and upper level northwest

The works in this exhibition were painted in the Europe District of Paris surrounding the Gare Saint-Lazare during the late nineteenth century—a time when the great train station with its heroic iron bridge and roaring steam engines symbolized a new modern energy and optimism. Among the fifty-nine works on view are twenty-eight paintings by Gustave Caillebotte, Edouard Manet, and Claude Monet, including Manet's masterpiece *The Railway*, or *Gare Saint-Lazare* (1872–1873), that has never ceased to intrigue critics, art historians, and lovers of great painting. Drawings, prints, photographs, and a period neighborhood map are included, and a fully illustrated catalogue is available.

The exhibition is made possible by a grant from The Florence Gould Foundation.

The exhibition is organized by the National Gallery of Art, Washington, and Réunion des Musées Nationaux/Musée d'Orsay, Paris.

It is supported by an indemnity from the Federal Council on the Arts and the Humanities.

Henri-Gabriel Ibels, "Les Fossiles"  
(*The Fossils*) by François de Curel,  
29 November 1892, National Gallery of Art, Washington, Gift of The Atlas Foundation, 1995.

CONTINUING EXHIBITION

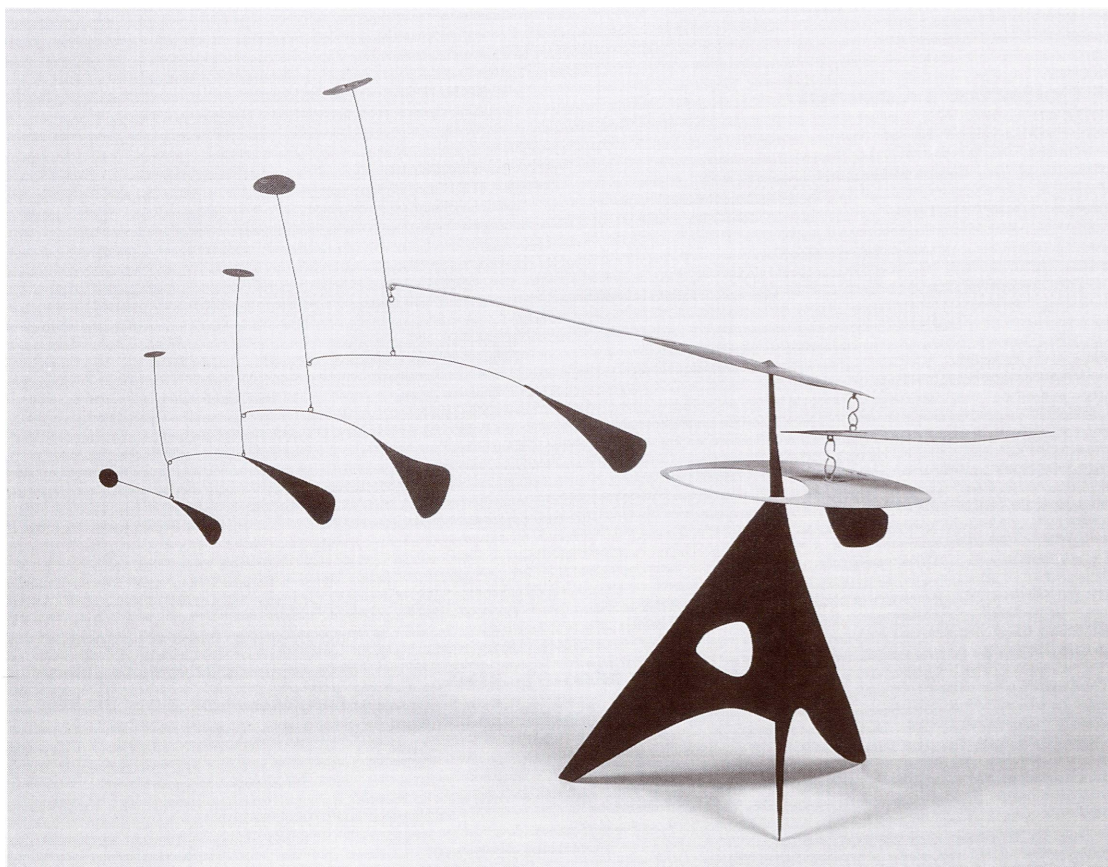
## Artists and the Avant-Garde Theater in Paris, 1887–1900

Through September 7, 1998  
East Building, ground level northwest

This exhibition of sixty-nine prints and related works from the National Gallery's Martin and Liane W. Atlas Collection—one of the finest collections of late nineteenth-century French theater programs in the world—explores the unique relationship between the visual and performing arts in Paris during that period. Artists represented include Edvard Munch, Paul Signac, Henri de Toulouse-Lautrec, and Edouard Vuillard. An outstanding watercolor by Pierre Bonnard for an unpublished program cover complements the works, along with scrapbooks about the Théâtre Libre that contain unpublished manuscripts, samples of tickets, and other ephemera. A fully illustrated exhibition catalogue is available.

The exhibition is organized by the National Gallery of Art.

# exhibitions



Alexander Calder, *Blue Feather*, c. 1948, Private Collection, New York. ©1998 Estate of Alexander Calder/Artists Rights Society (ARS), New York.

## CLOSING EXHIBITION

### Alexander Calder: 1898–1976

Through July 12, 1998  
East Building, upper level, mezzanine, and outdoors

The dynamic career of one of the twentieth century's most innovative artists and great public sculptors is presented in this retrospective celebrating the centenary of Alexander Calder's birth. More than two hundred sixty works are brought together to document Calder's development as an artist. A fully illustrated catalogue is available.

The exhibition is organized by the National Gallery of Art. United Airlines is the official carrier for the exhibition.

The exhibition is made possible by GTE Corporation.



## CLOSING EXHIBITION

### Degas at the Races

Through July 12, 1998  
West Building, main floor galleries

Horse racing, which was a fashionable sport in nineteenth-century France, inspired many of Edgar Degas' most striking and innovative works. The entire range of Degas' equestrian subjects, beginning with his earliest history paintings and copies after old masters, through his last elaborate pastels, is represented in this exhibition of one hundred twenty-seven works. A fully illustrated catalogue accompanies the exhibition.

Edgar Degas, *Horse with Jockey; Horse Galloping on Right Foot, the Back Left Only Touching the Ground*, 1890s, Collection of Mr. and Mrs. Paul Mellon, Upperville, Virginia.

The exhibition is organized by the National Gallery of Art. It is supported by an indemnity from the Federal Council on the Arts and the Humanities. United Airlines is the official carrier for the exhibition.

First Union Corporation is proud to make this exhibition possible.

## FORTHCOMING EXHIBITIONS

### Augustus Saint-Gaudens' Memorial to Robert Gould Shaw and the Massachusetts Fifty-fourth Regiment

Back on view late autumn 1998

### Van Gogh's Van Goghs: Masterpieces from the Van Gogh Museum, Amsterdam

October 4, 1998 through January 3, 1999

### Bernini's Rome: Italian Baroque Terracottas from The State Hermitage Museum, St. Petersburg

October 11, 1998 through January 3, 1999

### Love and War: A Manual for Life in the Late Middle Ages

November 8, 1998 through January 31, 1999

### Edo: Art in Japan 1615–1868

November 15, 1998 through February 15, 1999

## EXHIBITION PASSES

A pass system has been instituted for two major exhibitions this fall. The Gallery pass desk opens August 30 for advance passes. Details are below.

### Edo: Art in Japan 1615–1868

November 15, 1998 through February 15, 1999 East Building

Passes will be required for all visitors on weekends, busy weekdays, and holidays (Saturdays and Sundays, as well as November 26, 27, December 28, 29, 30, and 31, 1998, and January 18 and February 15, 1999). The National Gallery is closed on December 25 and January 1. Visitors can get same-day passes on the days listed above at the East Building pass desk. For advance pass information, see below.

### Van Gogh's Van Goghs: Masterpieces from the Van Gogh Museum, Amsterdam

October 4, 1998 through January 3, 1999 West Building

Passes will be required for all visitors every day. Same-day passes will be available every day that the exhibition is open and may be picked up at the West Building pass desk, located in the East Sculpture Hall on the main floor. Advance pass information follows:

### Advance Passes

Advance passes will be available free of charge in the East Building at the pass desk beginning August 30, 1998. Advance passes for both exhibitions may also be obtained beginning August 30, 1998, at all TicketMaster locations and Hecht's stores for a service charge of \$2.00 per pass and through TicketMaster Phone-Charge for a \$2.75 service fee per pass and a \$1.25 handling fee per order by calling one of the numbers listed below. There is a limit of six tickets per person.

Washington, DC (202) 432-SEAT  
Baltimore, MD (410) 481-SEAT  
Northern Virginia (703) 573-SEAT  
Nationwide toll-free (800) 551-SEAT (outside the areas listed above)

For information about passes, call the National Gallery of Art at (202) 737-4215 or the Telecommunications for the Deaf (TDD) at (202) 842-6176.

# calendar

J U L Y

## 1 WEDNESDAY

11:30 **Film:** *Manet, Monet, la Gare Saint-Lazare* (eba)  
12:00 **Gallery Talk:** *A Collector's Cabinet* (wb)  
1:00 **Gallery Talk:** *Artists and the Avant-Garde Theater in Paris* (eb)

## 2 THURSDAY

11:30 **Film:** *Manet, Monet, la Gare Saint-Lazare* (eba)  
2:00 **Slide Overview:** *Manet, Monet, and the Gare Saint-Lazare* (eba)

## 9 THURSDAY

11:30 **Film:** *Manet, Monet, la Gare Saint-Lazare* (eba)  
12:00 **Gallery Talk:** *Love Conquerors All: Mythological Themes in the National Gallery of Art* (wb)  
2:00 **Slide Overview:** *Manet, Monet, and the Gare Saint-Lazare* (eba)

## 10 FRIDAY

11:30 **Film:** *Manet, Monet, la Gare Saint-Lazare* (eba)  
12:00 **Gallery Talk:** *Love Conquerors All: Mythological Themes in the National Gallery of Art* (wb)

## 11 SATURDAY

11:30 **Film:** *Manet, Monet, la Gare Saint-Lazare* (eba)  
12:30 **Film:** *Syberberg Films Brecht* (eba)  
2:15 **Films:** *Katzgraben* and *The Bertolt Brecht Workshop* (eba)  
4:00 **Film:** *Die Mutter* (eba)

## 12 SUNDAY

11:30 **Film:** *Manet, Monet, la Gare Saint-Lazare* (eba)  
1:00 **Family Program:** *Color, Line, and Shape in Motion* (Program filled)  
2:00 **Lecture:** *The Marital Arts in the Early Italian Renaissance* (eba)  
4:00 **Films:** *Galileo* and *Mother Courage and Her Children* (eba)

## 14 TUESDAY

11:30 **Film:** *Manet, Monet, la Gare Saint-Lazare* (eba)  
1:00 **Slide Overview:** *Manet, Monet, and the Gare Saint-Lazare* (eba)

## 15 WEDNESDAY

11:30 **Film:** *Manet, Monet, la Gare Saint-Lazare* (eba)  
1:00 **Gallery Talk:** *Artists and the Avant-Garde Theater in Paris* (eb)

## 16 THURSDAY

11:30 **Film:** *Manet, Monet, la Gare Saint-Lazare* (eba)  
1:00 **Gallery Talk:** *The Architecture of I. M. Pei's East Building* (eb)  
2:00 **Slide Overview:** *Manet, Monet, and the Gare Saint-Lazare* (eba)

## 17 FRIDAY

11:30 **Film:** *Manet, Monet, la Gare Saint-Lazare* (eba)  
1:00 **Gallery Talk:** *The Architecture of I. M. Pei's East Building* (eb)

## 18 SATURDAY

11:30 **Film:** *Manet, Monet, la Gare Saint-Lazare* (eba)  
3:00 **Film:** *Aldous Huxley: The Gravity of Light* (eba)

## 19 SUNDAY

11:30 **Film:** *Manet, Monet, la Gare Saint-Lazare* (eba)  
2:00 **Lecture:** *The Urban Scene: Impressions of the Modern American City* (eba)  
4:00 **Films:** *Recent Films from Canada*, part 1 (eba)

## 21 TUESDAY

11:30 **Film:** *Manet, Monet, la Gare Saint-Lazare* (eba)  
12:00 **Gallery Talk:** "Procession Seville" by Francis Picabia (eb)  
1:00 **Slide Overview:** *Manet, Monet, and the Gare Saint-Lazare* (eba)

## 22 WEDNESDAY

11:30 **Film:** *Manet, Monet, la Gare Saint-Lazare* (eba)  
12:30 **Film:** *First Person Singular: I. M. Pei*

## 23 THURSDAY

11:30 **Film:** *Manet, Monet, la Gare Saint-Lazare* (eba)  
12:00 **Gallery Talk:** "Procession Seville" by Francis Picabia (eb)  
12:30 **Film:** *First Person Singular: I. M. Pei* (eba)  
1:00 **Gallery Talk:** *Mark Rothko* (eb)  
2:00 **Slide Overview:** *Manet, Monet, and the Gare Saint-Lazare* (eba)

## 24 FRIDAY

11:30 **Film:** *Manet, Monet, la Gare Saint-Lazare* (eba)  
12:00 **Gallery Talk:** "Procession Seville" by Francis Picabia (eb)  
12:30 **Film:** *First Person Singular: I. M. Pei* (eba)

## 25 SATURDAY

11:30 **Film:** *Manet, Monet, la Gare Saint-Lazare* (eba)  
12:30 **Film:** *First Person Singular: I. M. Pei* (eba)  
3:00 **Films:** *Recent Films from Canada*, part 2 (eba)

## 26 SUNDAY

11:30 **Film:** *Manet, Monet, la Gare Saint-Lazare* (eba)  
2:00 **Lecture:** *Claude Monet: Impressionism and Beyond* (eba)  
4:00 **Films:** *Recent Films from Canada*, part 3 (eba)

## 27 MONDAY

12:00 **Gallery Talk:** *Mark Rothko* (eb)  
1:00 **Gallery Talk:** *The Architecture of I. M. Pei's East Building* (eb)

## 28 TUESDAY

11:30 **Film:** *Manet, Monet, la Gare Saint-Lazare* (eba)  
1:00 **Slide Overview:** *Manet, Monet, and the Gare Saint-Lazare* (eba)

## 29 WEDNESDAY

11:30 **Film:** *Manet, Monet, la Gare Saint-Lazare* (eba)  
12:00 **Gallery Talk:** *Mark Rothko* (eb)  
12:30 **Film:** *Lord Elgin and Some Stones of No Value* (eba)

## 30 THURSDAY

11:30 **Film:** *Manet, Monet, la Gare Saint-Lazare* (eba)  
12:30 **Film:** *Lord Elgin and Some Stones of No Value* (eba)  
2:00 **Slide Overview:** *Manet, Monet, and the Gare Saint-Lazare* (eba)

## 31 FRIDAY

11:30 **Film:** *Manet, Monet, la Gare Saint-Lazare* (eba)  
12:30 **Film:** *Lord Elgin and Some Stones of No Value* (eba)

### Guide to Locations

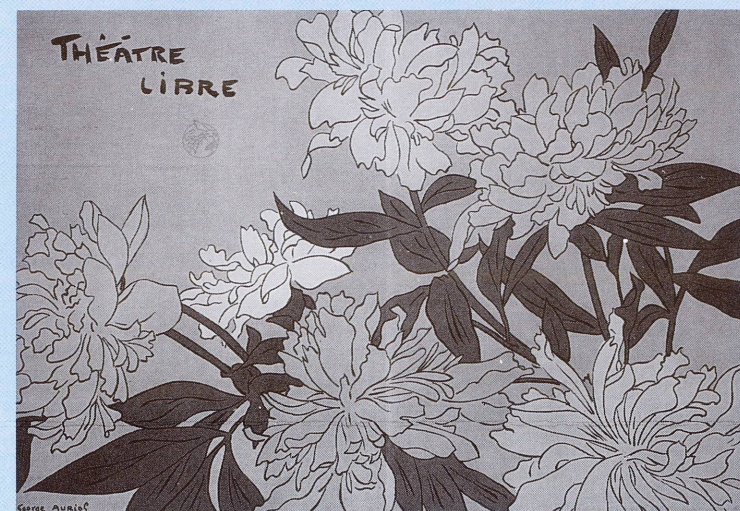
- eb East Building, ground level art information desk
- eba East Building auditorium
- ebsa East Building small auditorium
- wb West Building Rotunda
- wbgc West Building Garden Court
- wblh West Building lecture hall

See listings under Guided Tours for daily tours of the collections and foreign language tours.

# calendar

AUGUST

<p><b>1 SATURDAY</b> 11:30 <b>Film:</b> <i>Manet, Monet, la Gare Saint-Lazare</i> (eba) 12:30 <b>Film:</b> <i>Lord Elgin and Some Stones of No Value</i> (eba) 3:00 <b>Film:</b> <i>Grey Gardens</i> (eba)</p> <p><b>2 SUNDAY</b> 11:30 <b>Film:</b> <i>Manet, Monet, la Gare Saint-Lazare</i> (eba) 1:00 <b>Family Program:</b> <i>All Aboard</i> (Advance registration required) 2:00 <b>Lecture:</b> <i>The Imperial Court and the Reception of Modernism in Nineteenth-Century Berlin</i> (eba) 4:00 <b>Film:</b> <i>Rostropovich Returns to Russia</i> (eba)</p>	<p><b>5 WEDNESDAY</b> 11:30 <b>Film:</b> <i>Manet, Monet, la Gare Saint-Lazare</i> (eba) 12:00 <b>Gallery Talk:</b> <i>A Collector's Cabinet</i> (wb) 12:30 <b>Film:</b> <i>Christo in Paris</i> (eba)</p> <p><b>6 THURSDAY</b> 11:30 <b>Film:</b> <i>Manet, Monet, la Gare Saint-Lazare</i> (eba) 12:00 <b>Gallery Talk:</b> <i>Impressionism and the Painting of Modern Life</i> (wb) 12:30 <b>Film:</b> <i>Christo in Paris</i> (eba) 2:00 <b>Slide Overview:</b> <i>Manet, Monet, and the Gare Saint-Lazare</i> (eba)</p> <p><b>7 FRIDAY</b> 11:30 <b>Film:</b> <i>Manet, Monet, la Gare Saint-Lazare</i> (eba) 12:00 <b>Gallery Talk:</b> <i>A Collector's Cabinet</i> (wb) 12:30 <b>Film:</b> <i>Christo in Paris</i> (eba)</p> <p><b>8 SATURDAY</b> 11:30 <b>Film:</b> <i>Manet, Monet, la Gare Saint-Lazare</i> (eba) 12:30 <b>Film:</b> <i>Christo in Paris</i> (eba) 1:00 <b>Gallery Talk:</b> <i>Impressionism and the Painting of Modern Life</i> (wb) 3:00 <b>Film:</b> <i>Metropolis</i> (eba)</p> <p><b>9 SUNDAY</b> 11:30 <b>Film:</b> <i>Manet, Monet, la Gare Saint-Lazare</i> (eba) 1:00 <b>Family Program:</b> <i>All Aboard</i> (Advance registration required) 2:00 <b>Lecture:</b> <i>The Pleasures of Suburban Life</i> (eba) 4:00 <b>Film:</b> <i>Gimme Shelter</i> (eba)</p> <p><b>11 TUESDAY</b> 11:30 <b>Film:</b> <i>Manet, Monet, la Gare Saint-Lazare</i> (eba) 12:00 <b>Gallery Talk:</b> <i>Mark Rothko</i> (eb) 1:00 <b>Slide Overview:</b> <i>Manet, Monet, and the Gare Saint-Lazare</i> (eba)</p> <p><b>12 WEDNESDAY</b> 11:30 <b>Film:</b> <i>Manet, Monet, la Gare Saint-Lazare</i> (eba) 1:00 <b>Gallery Talk:</b> <i>Mary Cassatt, 1844–1926</i> (wb)</p>	<p><b>13 THURSDAY</b> 11:30 <b>Film:</b> <i>Manet, Monet, la Gare Saint-Lazare</i> (eba) 1:00 <b>Gallery Talk:</b> <i>Mary Cassatt, 1844–1926</i> (wb) 2:00 <b>Slide Overview:</b> <i>Manet, Monet, and the Gare Saint-Lazare</i> (eba)</p> <p><b>14 FRIDAY</b> 11:30 <b>Film:</b> <i>Manet, Monet, la Gare Saint-Lazare</i> (eba) 1:00 <b>Gallery Talk:</b> <i>Mary Cassatt, 1844–1926</i> (wb)</p> <p><b>15 SATURDAY</b> 11:30 <b>Film:</b> <i>Manet, Monet, la Gare Saint-Lazare</i> (eba) 1:00 <b>Gallery Talk:</b> <i>Mary Cassatt, 1844–1926</i> (wb) 3:00 <b>Films:</b> <i>Hintertrepp</i> and <i>The Cabinet of Dr. Caligari</i> (eba)</p> <p><b>16 SUNDAY</b> 11:30 <b>Film:</b> <i>Manet, Monet, la Gare Saint-Lazare</i> (eba) 2:00 <b>Lecture:</b> <i>The Pleasures of Parisian Nightlife</i> (eba) 4:00 <b>Films:</b> <i>Meet Marlon Brando; Truman Capote; and The Beatles in the U.S.A.</i> (eba)</p> <p><b>18 TUESDAY</b> 11:30 <b>Film:</b> <i>Manet, Monet, la Gare Saint-Lazare</i> (eba) 1:00 <b>Slide Overview:</b> <i>Manet, Monet, and the Gare Saint-Lazare</i> (eba)</p> <p><b>19 WEDNESDAY</b> 11:30 <b>Film:</b> <i>Manet, Monet, la Gare Saint-Lazare</i> (eba) 12:30 <b>Film:</b> <i>Vladimir Horowitz—The Last Romantic</i> (eba)</p> <p><b>20 THURSDAY</b> 11:30 <b>Film:</b> <i>Manet, Monet, la Gare Saint-Lazare</i> (eba) 2:00 <b>Slide Overview:</b> <i>Manet, Monet, and the Gare Saint-Lazare</i> (eba)</p>	<p><b>21 FRIDAY</b> 11:30 <b>Film:</b> <i>Manet, Monet, la Gare Saint-Lazare</i> (eba) 12:30 <b>Film:</b> <i>Vladimir Horowitz—The Last Romantic</i> (eba)</p> <p><b>22 SATURDAY</b> 11:30 <b>Film:</b> <i>Manet, Monet, la Gare Saint-Lazare</i> (eba) 12:30 <b>Film:</b> <i>Vladimir Horowitz—The Last Romantic</i> (eba) 3:00 <b>Film:</b> <i>The Golem</i> (eba)</p> <p><b>23 SUNDAY</b> 11:30 <b>Film:</b> <i>Manet, Monet, la Gare Saint-Lazare</i> (eba) 2:00 <b>Lecture:</b> <i>John Frederick Kensett: Where the Sea Meets the Sky</i> (eba) 4:00 <b>Films:</b> <i>Salesman and Showman</i> (eba)</p> <p><b>25 TUESDAY</b> 11:30 <b>Film:</b> <i>Manet, Monet, la Gare Saint-Lazare</i> (eba) 1:00 <b>Slide Overview:</b> <i>Manet, Monet, and the Gare Saint-Lazare</i> (eba)</p> <p><b>26 WEDNESDAY</b> 11:30 <b>Film:</b> <i>Manet, Monet, la Gare Saint-Lazare</i> (eba)</p> <p><b>27 THURSDAY</b> 11:30 <b>Film:</b> <i>Manet, Monet, la Gare Saint-Lazare</i> (eba) 2:00 <b>Slide Overview:</b> <i>Manet, Monet, and the Gare Saint-Lazare</i> (eba)</p> <p><b>28 FRIDAY</b> 11:30 <b>Film:</b> <i>Manet, Monet, la Gare Saint-Lazare</i> (eba)</p> <p><b>29 SATURDAY</b> 11:30 <b>Film:</b> <i>Manet, Monet, la Gare Saint-Lazare</i> (eba) 3:00 <b>Film:</b> <i>The Wonderful Lies of Nina Petrouna</i> (eba)</p> <p><b>30 SUNDAY</b> 11:30 <b>Film:</b> <i>Manet, Monet, la Gare Saint-Lazare</i> (eba) 2:00 <b>Lecture:</b> <i>The Holy Family on the Steps: If Not Poussin, Who?</i> (eba) 4:00 <b>Film:</b> <i>Concert of Wills: Making the Getty Center</i> (eba)</p>
---	--	---	---



George Auriol, "Ménages d'artistes" (Artists' Households) by Eugène Brieux; "Le Maître" (The Master) by Jean Jullien, 21 March 1890, National Gallery of Art, Washington, Gift of The Atlas Foundation, 1995. On view in *Artists and the Avant-Garde Theater in Paris, 1887–1900*.

**Guide to Locations**

eb	East Building, ground level art information desk
eba	East Building auditorium
ebsa	East Building small auditorium
wb	West Building Rotunda
wbgc	West Building Garden Court
wblh	West Building lecture hall

See listings under **Guided Tours** for daily tours of the collections and foreign language tours.

# programs

## Lectures

Lectures for July and August are given by National Gallery of Art staff

## Sunday Lectures

East Building auditorium at 2:00

JULY 12  
*The Marital Arts in the Early Italian Renaissance*  
Russell Sale

AUGUST 23  
*John Frederick Kensett: Where the Sea Meets the Sky*  
Lynn Russell

AUGUST 30  
*The Holy Family on the Steps: If Not Poussin, Who?*  
Pauline Maguire

## Summer Lecture Series

*Aspects of Impressionism*  
East Building auditorium  
Sundays at 2:00

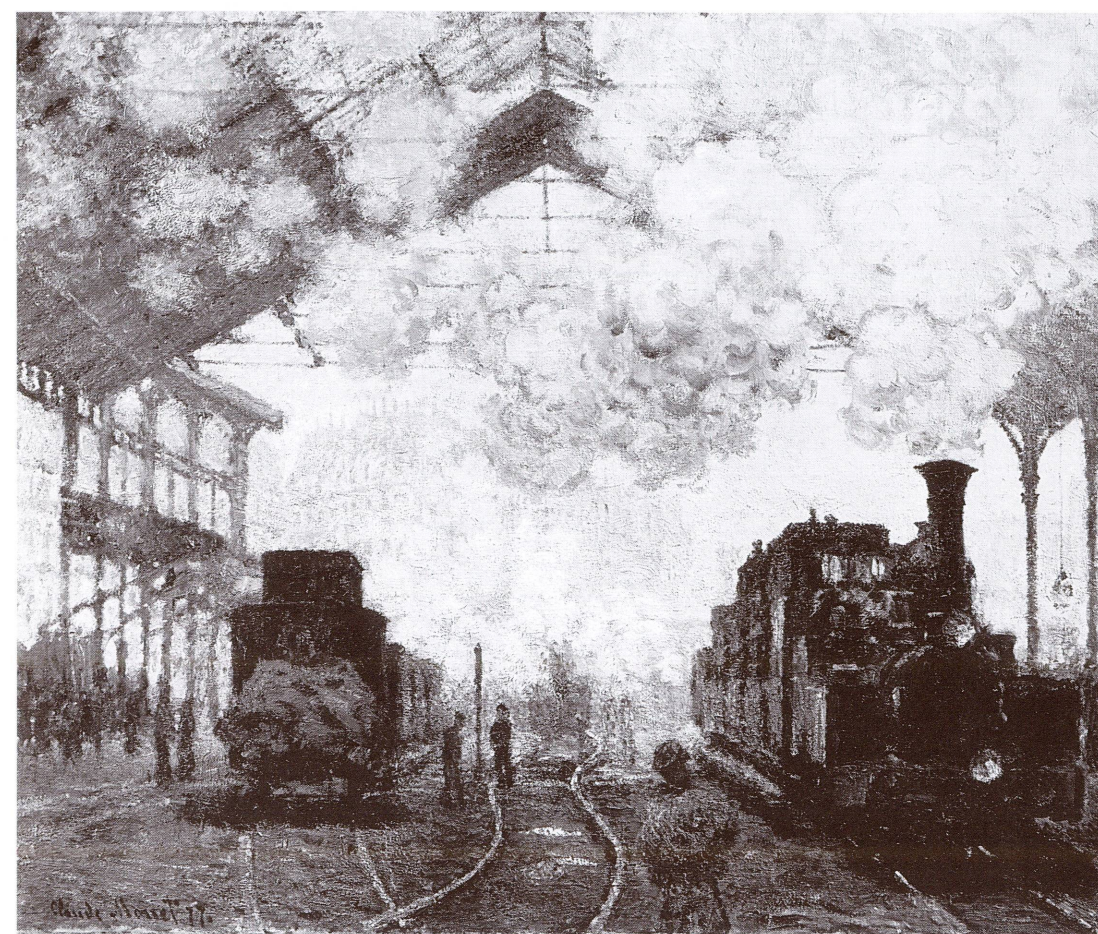
JULY 19  
*The Urban Scene: Impressions of the Modern American City*  
Wilford W. Scott

JULY 26  
*Claude Monet: Impressionism and Beyond*  
Frances Feldman

AUGUST 2  
*The Imperial Court and the Reception of Modernism in Nineteenth-Century Berlin*  
Christopher With

AUGUST 9  
*The Pleasures of Suburban Life*  
Philip Leonard

AUGUST 16  
*The Pleasures of Parisian Nightlife*  
Eric Denker



Claude Monet, *Gare Saint-Lazare, Arrival of a Train, 1877*, Fogg Art Museum, Harvard University Art Museums, Cambridge, Massachusetts, Bequest from the Collection of Maurice Wertheim, Class of 1906. On view in *Manet, Monet, and the Gare Saint-Lazare*.

## Gallery Talks

Talks begin in the West Building Rotunda (wb), at the East Building art information desk (eb), or in the East Building large auditorium (eba).

## Focus: The Permanent Collection

*Love Conquers All: Mythological Themes in the National Gallery of Art* (50 minutes). Russell Sale, staff. July 7, 9, and 10 at noon (wb)

"Procession Seville" by Francis Picabia (20 minutes). Wilford W. Scott, staff. July 21, 23, and 24 at noon (eb)

*Impressionism and the Painting of Modern Life* (60 minutes). Philip Leonard, staff. August 4 and 6 at noon; August 8 at 1:00 (wb)

*Mary Cassatt, 1844–1926* (50 minutes). Jill Dawsey, intern. August 12, 13, 14, and 15 at 1:00 (wb)

## Special Exhibitions

*A Collector's Cabinet* (50 minutes). Frances Feldman, staff. July 1 and 3, August 5 and 7 at noon (wb)

*Artists and the Avant-Garde Theater in Paris* (50 minutes). Eric Denker, staff. July 1, 8, and 15 at 1:00 (eb)

*The Architecture of I. M. Pei's East Building* (30 minutes). Bret Stilwell, staff. July 16, 17, and 27 at 1:00 (eb)

*Mark Rothko* (50 minutes). Christopher With, staff. July 23 at 1:00; July 27, 29, and August 11 at noon (eb)

*Introductory Slide Overview: Manet, Monet, and the Gare Saint-Lazare* (45 minutes). Education division staff. July 2, 9, 16, 23, and 30 at 2:00; July 7, 14, 21, and 28 at 1:00; August 4, 11, 18, and 25 at 1:00; August 6, 13, 20, and 27 at 2:00 (eba)

## Family Programs

*Color, Line, and Shape in Motion*. July 12, ages six to nine. (Program filled)

*All Aboard*. Families will tour the exhibition *Manet, Monet, and the Gare Saint-Lazare* and will participate in a hands-on activity. August 2 and 9, ages six to nine. Registration begins July 5.

Family programs are held on Sundays from 1:00–3:00. The programs are free and are designed for children with an accompanying adult. Preregistration is required. Call (202) 789-3030.

## Radio Program

*This Week at the National Gallery*, a weekly radio program of Gallery activities and staff commentary, airs each Saturday at 1:24 pm on WGMS 103.5 FM. The program, hosted by Barbara Tempchin, can be heard immediately before the weekly opera broadcast. This program is made possible by The Circle of the National Gallery of Art.

## Web Site

Home to one of the finest collections of art in the world, information about the National Gallery's comprehensive collection of more than 100,000 works may be found on the Gallery's Web site at <http://www.nga.gov>. Over 4,000 full-screen images and over 11,000 details of works of art are presented in magnificent color. Visitors may take virtual tours of special exhibitions; enjoy audio segments; discover current information on exhibitions, lectures, films, and concerts; examine the *Shaw Memorial* in-depth; or go shopping online in Gallery Shops.

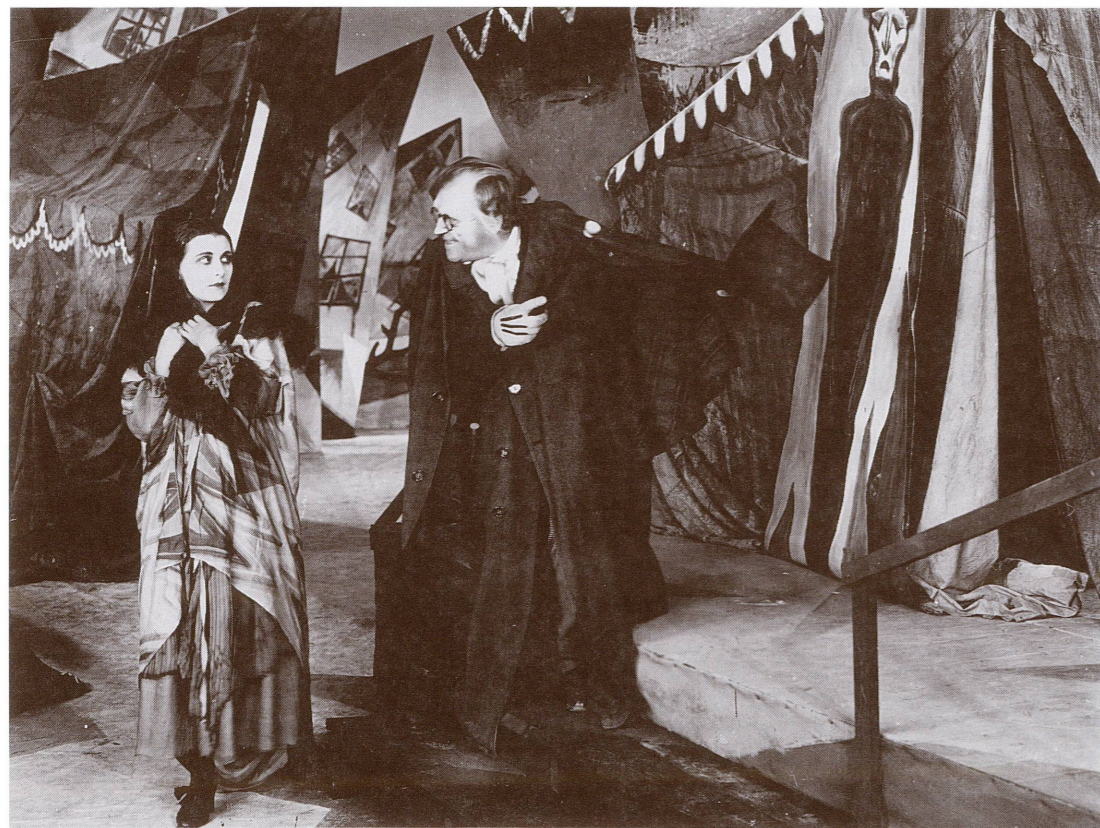


Young visitor using the Micro Gallery computers.

## Micro Gallery

Located on the main floor of the West Building and made possible by the *American Express Foundation*, this interactive multimedia computer system enables you to see in magnified detail nearly every work of art on display in the permanent collection. Touch-screen computers enable you to discover information about artists and historical periods, and to design and print out a personal tour to guide you through the collection or to locate your favorite work of art.

# programs



From *The Cabinet of Dr. Caligari*, 1919.  
Saturday, August 15, 3:00.

## Film Programs

East Building auditorium

On July 5, 11, and 12, *The Bertolt Brecht Workshop*, a collection of films made by German dramatist Brecht (1898–1956) and his theatrical colleagues from the 1920s through the 1950s, includes Charles Laughton's performance in *Galileo* (1947), the Berliner Ensemble's rendering of *Katzgraben* (1957), and G. W. Pabst's *The Threepenny Opera* (1931).

Also on weekends in July, in cooperation with the Embassy of Canada and the Canadian Film Institute, a series focusing on recent directions in Canadian documentary film will include the premiere of Oliver Hockenhull's *Aldous Huxley: The Gravity of Light* on July 18, followed by a discussion with the director.

*First Person Singular: I. M. Pei* will be shown during July in conjunction with the twentieth anniversary of the East Building. A half-hour film on the exhibition *Manet, Monet, and*

*the Gare Saint-Lazare* screens daily except Monday at 11:30 am.

Films from the golden age of silent cinema in the collection of the George Eastman House will be shown on Saturdays during August. *The Cabinet of Dr. Caligari*; *The Golem*; *Metropolis*; and *The Wonderful Lies of Nina Petrovna* will be accompanied live by pianist Ray Brubacher.

*Cinema Direct—Maysles Films 1962–1998* presents six programs of documentaries by renowned American filmmakers Albert and David Maysles and their associates including a new 35mm print of *Grey Gardens* (1976) and Maysles Films' most recent work *Concert of Wills: Making the Getty Center*.

July and August films are listed on the Calendar pages in this issue and in the Gallery's *Film Calendar*. Pick up a free copy outside the East Building auditorium, or to receive a free copy by mail, call (202) 842-6799 or e-mail [film-department@nga.gov](mailto:film-department@nga.gov).

## Guided Tours

### Introductory Tours

*The West Building Collection*  
Monday–Friday, 11:30 and 3:30  
Saturday, 10:30 and 12:30  
Sunday, 12:30, 2:30, and 4:30  
West Building Rotunda

*The East Building Collection*  
Monday–Friday, 10:30 and 1:30  
Saturday and Sunday, 11:30, 1:30,  
and 3:30  
East Building art information desk

*The Italian Renaissance Collection*  
Monday, Wednesday, and Friday,  
12:30  
West Building Rotunda

*Nineteenth-Century French Painting*  
Tuesday and Thursday, 12:30  
West Building Rotunda

*The American Collection*  
Monday–Saturday, 2:30  
West Building Rotunda

### Foreign Language Tours

Tours of the Gallery's permanent collection are offered on the dates listed below. West Building tours, and American art in French and Spanish, begin at noon in the Rotunda. East Building tours begin at 2:00 at the art information desk.

July 6 and August 3: *American Art in French*

July 7 and August 4: *French*

July 11, 14, 23 and August 1, 11, 20:  
*Spanish*

July 16, 18, 30 and August 13, 15, 27:  
*Japanese*

July 21 and August 18: *German*

July 28 and August 25: *Italian*

July 31 and August 28: *American Art in Spanish*

## Audio Tours

### The Director's Tour

Narrated by Director Earl A. Powell III and National Gallery curators, this audio tour of some of the National Gallery's greatest treasures is available in the INFORM® format. Visitors choose the order in which they will look at paintings and the length of time they will spend with each.

This tour provides commentary on more than fifty beloved masterpieces by Leonardo da Vinci, Rembrandt van Rijn, Johannes Vermeer, Claude Monet, and others, along with information on art acquisition, history, and conservation.

*The Director's Tour* is available for rental near the Rotunda in the West Building for \$5.00 for adults and \$4.50 for senior citizens, students, and groups of ten or more.

### Special Exhibitions

*Degas at the Races*, INFORM® format, narrated by Earl A. Powell III, director, and Philip Conisbee, senior curator of European paintings. Includes selections designed especially for children.

*Alexander Calder: 1898–1976*, narrated by Earl A. Powell III, director; Marla Prather, curator, twentieth-century art; and Alexander S. C. Rower, grandson of the artist and director of The Alexander & Louisa Calder Foundation.

*Manet, Monet, and the Gare Saint-Lazare*, introduced by Earl A. Powell III, director.

Special exhibition tours are available for rental at the entrance to the exhibitions for \$4.00 for adults and \$3.50 for senior citizens, students, and groups of ten or more.

Earphones, amplified headsets, and scripts are available for all *Audio Tours* for those with hearing impairments. For group reservations call (202) 842-6592.

# information



## Charitable Giving

Your charitable gift can help support the National Gallery's special projects by providing funds for educational brochures, exhibition videos, radio programs, and collection-focused Gallery guides. For information about making a gift to support the National Gallery of Art, call or write to:

Development Office  
National Gallery of Art  
Washington, DC 20565  
(202) 842-6372

## Gallery Shops

Don't miss the annual sale in the Gallery Shops, June 18 through July 5. This year's sale will have a wide range of merchandise. Substantial reductions will be taken on selected jewelry, books, stationery products, posters, toys, and games. This is the perfect time to start your holiday shopping, stockpile gifts for future occasions, or simply add to your personal library.

## Restaurant Highlights

### Concourse Buffet Concourse

Continental breakfast is served Monday through Saturday, 10:00–11:00 offering fresh fruit, breakfast breads, and bagels. For lunch select from fresh made specialty salads, pizzas, hotdogs, hamburgers, deli sandwiches, homestyle entrées, fresh vegetables, and a wide variety of fresh baked cookies, cakes, and pies.

Monday–Friday, 10:00–3:00  
Saturday, 10:00–3:30  
Sunday, 11:00–4:00

### Cascade Espresso Bar Concourse

An excellent break or perfect way to complete your visit to the National Gallery of Art. Choose from specialty coffees, espresso, cappuccino, and other refreshments. The menu offers sandwiches, light snacks, and desserts.

Monday–Saturday, 12:00–4:30  
Sunday, 12:00–5:30

### Garden Café West Building, ground floor

The Garden Café offers classic scenery in which to enjoy lunch. The menu includes entrées related to the current exhibitions, as well as traditional American fare. For individual and group reservations, please call (202) 216-2494.

Monday–Saturday, 11:30–3:00  
Sunday, 12:00–4:00

### Terrace Café East Building, upper level

Enjoy a relaxing lunch overlooking the Mall and the Calder mobile. The menu offers a selection of salads, sandwiches, and entrées. For individual and group reservations, please call (202) 216-2492.

Monday–Saturday, 11:30–3:00  
Sunday, 12:00–4:00

Gallery Director Earl A. Powell III discusses the Calder mobile with host Barbara Tempchin for the Gallery's radio program.

### Catalogues and Guides

*Degas at the Races*  
\$32.00 (softbound)  
\$50.00 (hardbound)

*Alexander Calder: 1898–1976*  
\$37.00 (softbound)  
\$65.00 (hardbound)

*A Collector's Cabinet*  
\$17.00 (softbound)

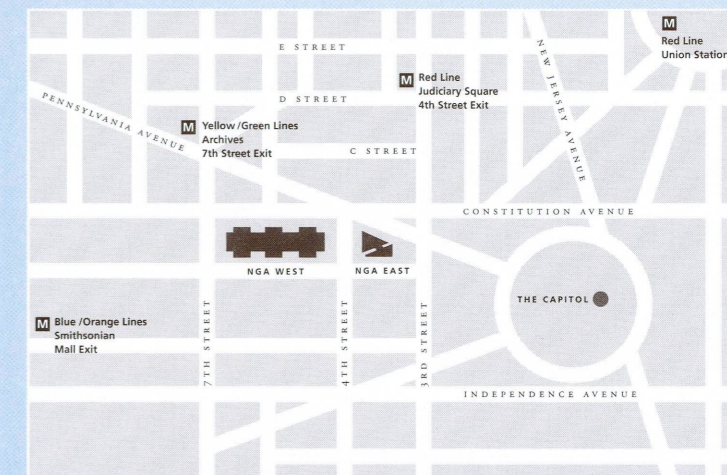
*Manet, Monet, and the Gare Saint-Lazare*  
\$24.95 (softbound)  
\$40.00 (hardbound)

*Artists and the Avant-Garde Theater in Paris, 1887–1900*  
\$39.50 (softbound)

*Mark Rothko*  
\$35.00 (softbound)  
\$65.00 (hardbound)

Tour the Gallery's permanent collection with *A World of Art*, a gallery guide available for \$24.95 (softbound) or \$40.00 (hardbound). Also, choose from a selection of illustrated, self-guided brochures, family guides with children's games, and adult walking tours for \$2.50 each.

Sales information: (202) 842-6466. Mail order: (301) 322-5900 or (800) 697-9350. You may also browse the Gallery Shops and make your purchases on the National Gallery of Art's Web site at <http://www.nga.gov>.



## Gallery Information

The National Gallery of Art and its collections belong to the people of the United States of America. European and American paintings, sculpture, decorative arts, and selected works on paper are displayed in the permanent collection galleries, and temporary exhibitions of art from countries and cultures throughout the world are presented on a regular basis. Works of art on paper not on exhibit are available for viewing by appointment, weekdays. Call (202) 842-6380. Admission is always free.

The Matisse cut-outs are on view between 10:00 and 2:00 weekdays and Saturdays, 11:00 to 3:00 on Sunday.

### Hours

Monday–Saturday, 10:00–5:00  
Sunday, 11:00–6:00

### Exhibition and General Information

Call (202) 737-4215

### Web Site

Visit the Gallery at <http://www.nga.gov>.

### Location

The Gallery is located between 3d and 7th Streets, NW, on Constitution Avenue. The nearest Metro stops are *Judiciary Square* on the Red Line, *Archives* on the Yellow/Green Lines, and *Smithsonian* on the Blue/Orange Lines. Metro bus stops are located on 4th Street and 7th Street. The East and West Buildings are connected by an all-weather underground passage with a moving walkway. Entrances to the West Building are on the Mall, on Constitution Avenue at 6th Street, and on 4th Street. The entrance to the East Building is on 4th Street.

### Calendar

If you or your organization would like to receive this free monthly Calendar of Events via mail, please call (202) 842-6662 or send your request by e-mail to [calendar@nga.gov](mailto:calendar@nga.gov).

## Accessibility

Ramps for wheelchairs and strollers are located at the 6th Street entrance to the West Building on Constitution Avenue, NW, and at the 4th Street entrance to the East Building. Wheelchairs and strollers are available at all entrances. For information about access to public areas and galleries, refer to the *Brief Guide and Plan* of the East and West Buildings at the art information desks. Limited parking is available in front of the East Building for vehicles displaying the international symbol of accessibility (♿). Call (202) 842-6690.

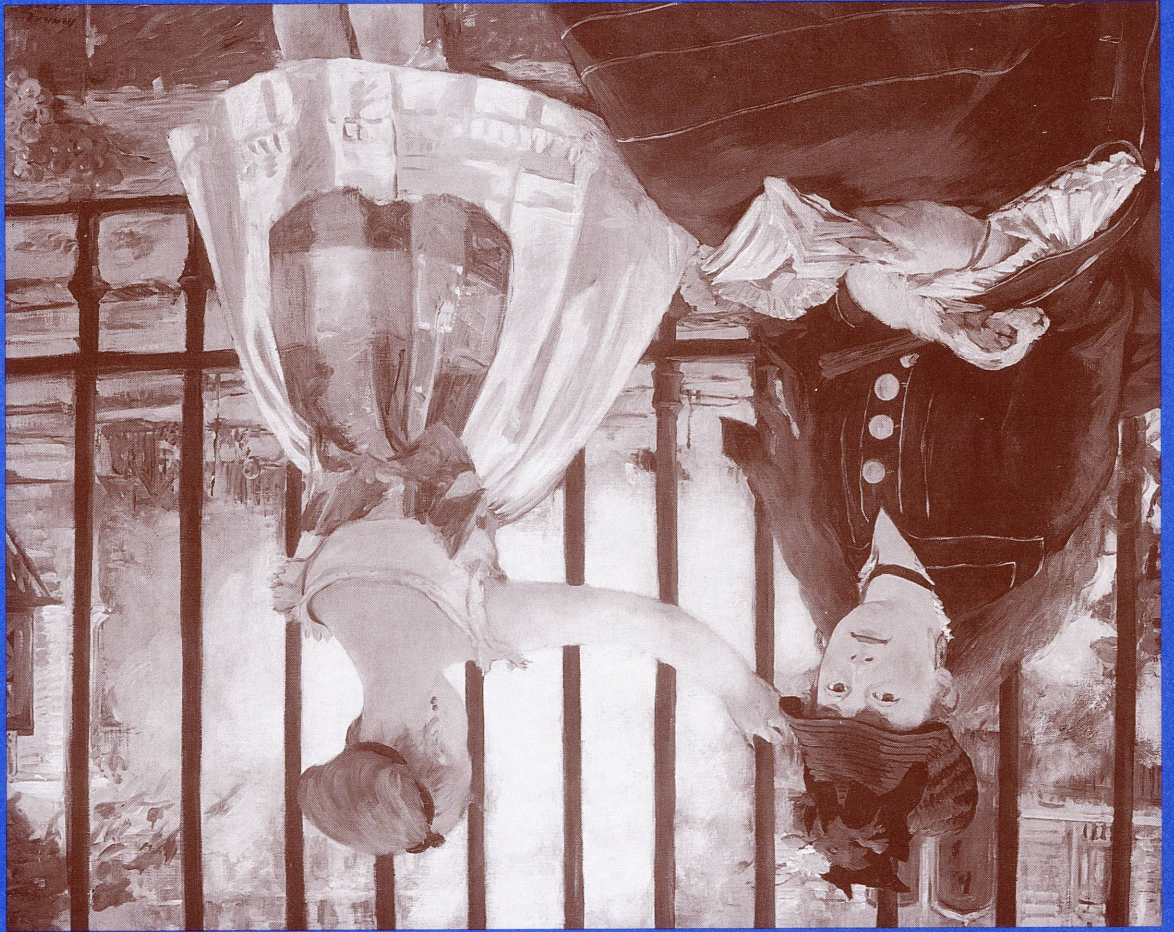
Assistive listening devices are available on a free-loan basis from the art information desk in the East Building for the large auditorium and the small auditorium, and at the Constitution Avenue art information desk for the West Building lecture hall.

Sign-language interpretation is available with three weeks' notice. Call (202) 842-6247 or the TDD line given below.

### Telecommunications Device for the Deaf (TDD)

Call (202) 842-6176  
A TDD has been installed at the public telephone adjacent to the stamp machine near the Concourse Sales Shop. This TDD is located to accommodate wheelchair users.

National  
Gallery of Art,  
Washington



July • August calendar 1998

National Gallery of Art  
Washington, DC 20565

*Delivery may be delayed by bulk-rate mailing.*

**ON THE COVER:**

Edouard Manet, *The Railway* (also known as *Gare Saint-Lazare*), 1872-1873, National Gallery of Art, Washington, Gift of Horace Havemeyer in memory of his mother, Louisine W. Havemeyer. On view in *Manet, Monet, and the Gare Saint-Lazare*.

# July • August