

# exhibitions



Above: Johannes Vermeer, *The Lacemaker*, c. 1669–1670, Musée du Louvre, Paris



Right: Johannes Vermeer, *Young Woman with a Water Pitcher*, c. 1664–1665, The Metropolitan Museum of Art, New York, Marquand Collection, Gift of Henry G. Marquand, 1889

CONTINUING EXHIBITION

## Johannes Vermeer

*Through February 11, 1996*  
West Building, main floor,  
galleries 72–77

This unprecedented exhibition devoted to the art of the extraordinary Dutch painter, Johannes Vermeer (1632–1675), presents twenty-one of the existing thirty-five works known to have been painted by this master who lived and worked in Delft in the mid-seventeenth century. This is the only venue for the exhibition in the United States. Vermeer has long been admired for his scenes of quiet intimacy, the sensitivity of his painting technique, and his remarkable depiction of light and shadow. Eight paintings have been recently conserved especially for this exhibition. The great masterpiece *View of Delft* (c. 1660–1661) has never before been seen outside Europe. A special display of seventeenth-century maps of the Netherlands and of Delft provides important information about where the artist lived and painted.

*Johannes Vermeer* is organized by the National Gallery of Art and the Royal Cabinet of Paintings Mauritshuis, The Hague. Paintings have been drawn from both of these collections, as well as from other major public and private collections throughout the world.

*The exhibition is made possible by United Technologies Corporation. It is supported by an indemnity from the Federal Council on the Arts and the Humanities.*

Passes are required for admission to the exhibition at all times.

## EXTENDED HOURS

The *Johannes Vermeer* exhibition will stay open until 7:00 on Friday, Saturday, and Sunday evenings through February 11. It will close at 6:00 on December 24 and 31. During the extended hours, it will be accessible by the West Building entrance at Sixth Street and Constitution Avenue, NW (after 5:00 on Fridays and Saturdays, and after 6:00 on Sundays.)

## EXHIBITION PASSES

Advance and same-day passes for *Winslow Homer* may be obtained free of charge in the East Building. Advance passes for *Johannes Vermeer* may be obtained free of charge in the East Building, and same-day passes in the West Building. There is a limit of 6 per person per exhibition. Advance passes for both exhibitions may also be obtained at all TicketMaster locations and Hecht's stores for a service charge of \$2.00 per pass, and through TicketMaster PhoneCharge for a \$2.75 service fee per pass and a \$1.25 handling fee per order by calling one of the following numbers:

Washington, DC: (202) 432-SEAT  
Baltimore, MD: (410) 481-SEAT  
Northern Virginia: (703) 573-SEAT  
Nationwide toll-free  
(outside the areas listed above)  
(800) 551-SEAT

For more information about passes call (202) 842-6713 for *Winslow Homer*; (202) 842-6684 for *Johannes Vermeer*; or the Telecommunications Device for the Deaf (TDD) at (202) 842-6176.



# exhibitions

FEATURES FROM THE PERMANENT COLLECTION

FORTHCOMING EXHIBITIONS

**The Art of Louis-Léopold Boilly: Modern Life in Napoleonic France**

February 4 through April 28, 1996

**Harry Callahan**

March 3 through May 19, 1996

**The Robert and Jane Meyerhoff Collection: 1945 to 1995**

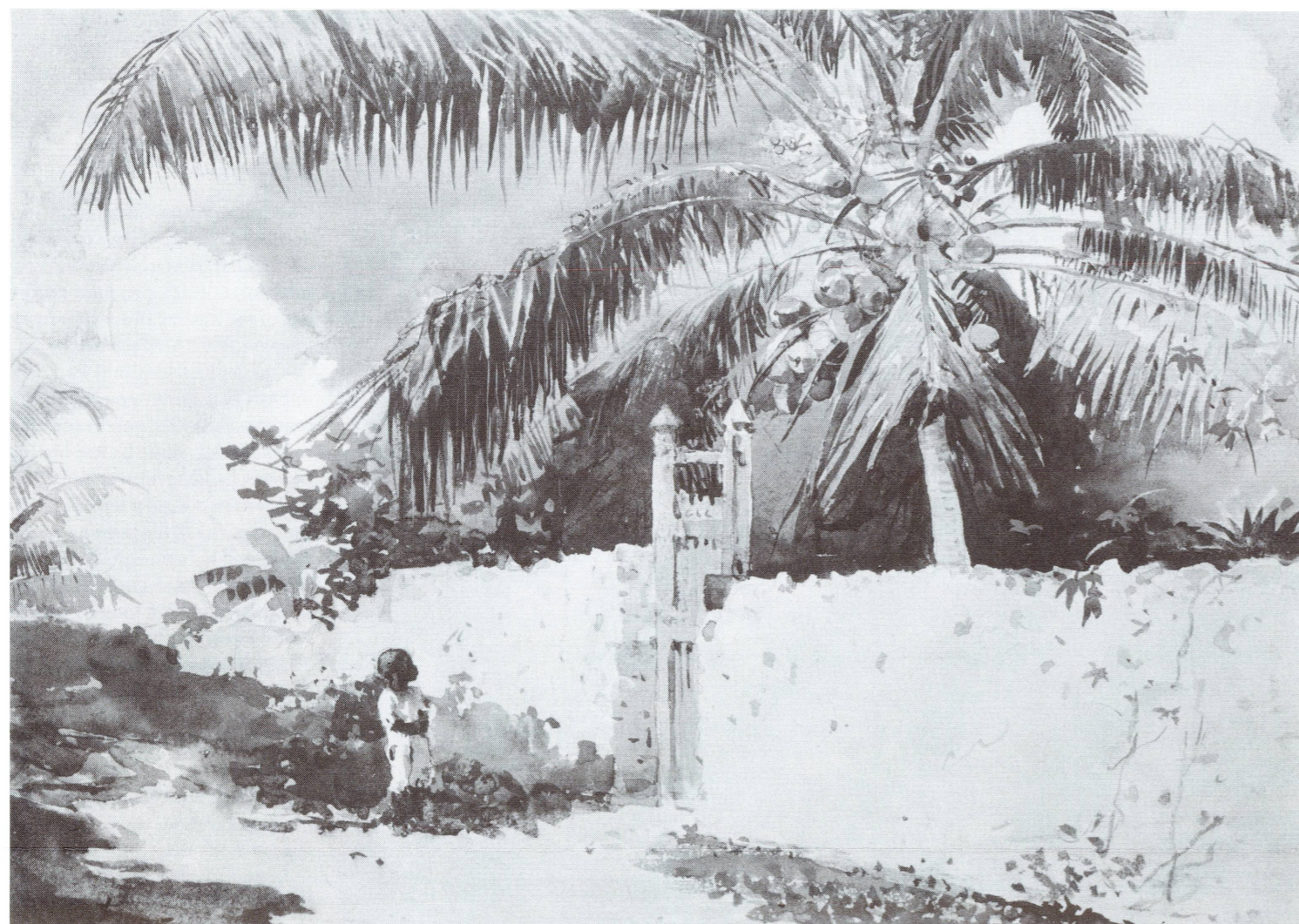
March 31 through July 21, 1996

**Jan Steen: Painter and Storyteller**

April 28 through August 18, 1996

**Scenes of Daily Life: Genre Prints from the Housebook Master to Rembrandt van Rijn**

April 28 through August 18, 1996



CLOSING EXHIBITION

**Winslow Homer**

Through January 28, 1996  
East Building, upper and mezzanine levels

The towering artistic achievement of Winslow Homer (1836–1910), one of America's greatest painters, is presented in the first comprehensive retrospective of his work in over twenty years. The exhibition of 228 works illustrates Homer's superb breadth and mastery, as well as his keen observation of life and sensitivity to political and cultural issues of the 1800s. Seventy-one objects in the show were specially selected to reveal the artist's technique, working methods, and creative process.

Visitors get a broad view of Homer's career, beginning with his first oil painting of Civil War subjects; works of the 1860s and

Winslow Homer, *Morning Glories*, 1873, Private Collection

Winslow Homer, *A Garden in Nassau*, 1885, Terra Foundation for the Arts, Daniel J. Terra Collection

1870s, in which he depicts fundamental aspects of national life; heroic paintings of the late nineteenth century; vivid nature scenes in the Adirondacks; picturesque water-colors of the tropics; and monumental Maine seascapes. The show concludes with the tragic, almost visionary paintings of Homer's final years, such as *Right and Left* (1909).

The exhibition is made possible by GTE Corporation.

The exhibition catalogue and brochure are supported by a grant from The Henry Luce Foundation.

Passes are required for admission to the exhibition on weekends and holidays (Saturday and Sunday, as well as December 26 through 31).

CLOSING EXHIBITION

**John Singleton Copley in England**

Through January 7, 1996  
West Building, main floor, galleries 57–59

The American-born painter John Singleton Copley's long and brilliant career in England is revealed in this exhibition of masterpieces of history and portrait painting. Copley, well known in America as the creator of the finest portraits of the colonial era, left the colonies in 1774 and spent the last forty-one years of his life in London. The exhibition, organized by the National Gallery of Art and The Museum of Fine Arts, Houston, brings together Copley's finest English period paintings with a group of related drawings. Copley mastered the elements of the fashionable English style of painting, exchanging the tight and linear handling of his colonial period for a more fluid and expressive manner.



By the 1780s Copley was considered one of the most important painters working in England, and with his great masterpiece, *The Death of Major Peirson, 6 January 1781* (1783), Copley created one of the grandest and most stirring history paintings of the eighteenth century.

The exhibition is made possible by Republic National Bank of

John Singleton Copley, *Charles Callis Western and His Brother, 1783*, The Huntington Library, Art Collections, and Botanical Gardens

New York, Safra Republic Holdings, S. A., and Banco Safra, S. A., Brazil. It is supported by an indemnity from the Federal Council on the Arts and the Humanities.



Albrecht Dürer, *The Virgin Annunciate*, c. 1495/1499, National Gallery of Art, Woodner Collection

CLOSING EXHIBITION

**The Touch of the Artist: Master Drawings from the Woodner Collections**

Through January 28, 1996  
East Building, ground level

Over a period of thirty-five years, the late Ian Woodner put together one of the preeminent private collections of old master and modern drawings in America. The 114 works in this exhibition were selected from the core of the collection, which has been preserved at the National Gallery of Art. Spanning more than five centuries, the Woodner collection encompasses the full range of European drawing from its first flowering in the early Renaissance through most of the major styles until 1900. A centerpiece of the exhibition is a rare page from Giorgio Vasari's famous *Libro de' Disegni* (Book of Drawings), onto which Vasari had mounted ten fifteenth-century drawings, including nine by Filippino Lippi. Among the other artists represented are Leonardo da Vinci, Raphael, Rembrandt, Jean-Auguste-Dominique Ingres, and the young Pablo Picasso.

The exhibition brochure is made possible by a special grant from Ford Motor Company.

**Dutch Cabinet Galleries**

Through February 11, 1996  
West Building, main floor, galleries 50 a, b, and c

Newly constructed spaces adjacent to the existing Dutch galleries have been specially designed to create three intimate cabinet galleries. This new space is ideally suited for display of smaller paintings from the permanent collection, as well as related objects in different media such as drawings, prints, and small sculpture. The four inaugural installations include works from public and private collections, as well as works from the National Gallery of Art's collection: "Adriaen Brouwer: *Youth Making a Face*," "Paintings on Copper," "Vermeer's Contemporaries," and "Dutch and Flemish Still-Life Paintings."

The creation of the Dutch Cabinet Galleries is made possible by Juliet and Lee Folger & The Folger Fund.

The installation of "Adriaen Brouwer: *Youth Making a Face*" is made possible by gifts from Juliet and Lee Folger & The Folger Fund, The Wunsch Foundation, and friends of Arthur K. Wheelock, Jr.

The exhibition brochure is made possible by The Circle of the National Gallery of Art.

**Special Installation of Works by Jean Dubuffet from the Stephen Hahn Family Collection**

The National Gallery of Art recently received a partial and promised gift from the Stephen Hahn Family Collection of thirty-five works of art by preeminent French artist Jean Dubuffet (1901–1985). Many of these works are installed in the East Building upper level galleries.



Screen shot from the Micro Gallery

**Micro Gallery**

(closed January 24)  
West Building, main floor, Micro Gallery

The National Gallery of Art's Micro Gallery, the most comprehensive interactive, multimedia computer system in an American art museum, enables visitors with little or no computer experience to discover new ways to view the permanent collection and expand their appreciation of art at the touch of a computer screen. Thirteen computers have been installed in the redesigned art information room near the West Building Mall entrance. Visitors are able to see in magnified detail nearly every work of art on display in the permanent collection. In addition, the user can touch the screen to access an illustrated explanation of the subject, the artist's biography, and pertinent sections of the historical and cultural timeline and atlas.

Thousands of pathways have been constructed to allow users to follow their own interests, encompassing subjects, artists, geographic areas, time periods, a pronunciation guide with sound, and more. Visitors can design a personal tour of paintings of their favorite subject and print it out to use as a guide in the galleries. An introduction to the Gallery and practical information about restaurants, shops, and other facilities, is also provided.

The Micro Gallery is made possible by American Express Foundation.



# calendar

J A N U A R Y

<p><b>1</b> MONDAY New Year's Holiday — National Gallery Closed</p> <p><b>2</b> TUESDAY 11:15 <b>Slide Overview:</b> <i>Vermeer</i> (wblh) 12:00 <b>Gallery Talk:</b> <i>Edouard Vuillard, 1868–1940</i> (eb) 2:00 <b>Gallery Talk:</b> <i>Dutch Cabinet Galleries</i> (wb) 2:00 <b>Slide Overview:</b> <i>Winslow Homer</i> (eba)</p> <p><b>3</b> WEDNESDAY 11:15 <b>Slide Overview:</b> <i>Vermeer</i> (wblh) 12:00 <b>Gallery Talk:</b> <i>Master Drawings From the Woodner Collections</i> (eb) 12:30 <b>Film:</b> <i>Winslow Homer: The Nature of the Artist</i> (eba) 2:00 <b>Slide Overview:</b> <i>Winslow Homer</i> (eba)</p> <p><b>4</b> THURSDAY 10:15 <b>Survey Course:</b> <i>Sixteenth-Century Art in Venice and Germany</i> (eba) 11:15 <b>Slide Overview:</b> <i>Vermeer</i> (wblh) 12:00 <b>Gallery Talk:</b> <i>Dutch Cabinet Galleries</i> (wb) 12:30 <b>Film:</b> <i>Winslow Homer: The Nature of the Artist</i> (eba) 1:00 <b>Gallery Talk:</b> <i>Homer and the Creative Process</i> (eb) 2:00 <b>Gallery Talk:</b> <i>"Peasants Celebrating Twelfth Night" by David Teniers II</i> (wb) 2:00 <b>Slide Overview:</b> <i>Winslow Homer</i> (eba)</p> <p><b>5</b> FRIDAY 10:30 <b>Slide Overview:</b> <i>Winslow Homer</i> (eba) 12:00 <b>Gallery Talk:</b> <i>Master Drawings From the Woodner Collections</i> (eb)</p>	<p>12:30 <b>Film:</b> <i>All the Vermeers in New York</i> (eba) 1:00 <b>Gallery Talk:</b> <i>Homer and the Creative Process</i> (eb) 2:00 <b>Gallery Talk:</b> <i>"Peasants Celebrating Twelfth Night" by David Teniers II</i> (wb)</p> <p><b>6</b> SATURDAY 10:15 <b>Survey Course:</b> <i>Sixteenth-Century Art in Venice and Germany</i> (eba) 11:15 <b>Slide Overview:</b> <i>Vermeer</i> (wblh) 12:00 <b>Gallery Talk:</b> <i>Edouard Vuillard, 1868–1940</i> (eb) 12:30 <b>Slide Overview:</b> <i>Winslow Homer</i> (eba) 2:00 <b>Gallery Talk:</b> <i>"Peasants Celebrating Twelfth Night" by David Teniers II</i> (wb) 2:30 <b>Film:</b> <i>All the Vermeers in New York</i> (eba)</p> <p><b>7</b> SUNDAY 11:15 <b>Slide Overview:</b> <i>Winslow Homer</i> (eba) 12:00 <b>Gallery Talk:</b> <i>Edouard Vuillard, 1868–1940</i> (eb) 1:00 <b>Film:</b> <i>Winslow Homer: The Nature of the Artist</i> (eba) 2:00 <b>Slide Overview:</b> <i>Vermeer</i> (wblh) 2:00 <b>Gallery Talk:</b> <i>Homer and the Creative Process</i> (eb) 4:00 <b>Lecture:</b> <i>The Realities of the Studio or the Vexations of Art</i> (eba) 6:00 <b>Film:</b> <i>All the Vermeers in New York</i> (eba) 7:00 <b>Concert:</b> <i>Gala Viennese New Year Concert</i>, National Gallery Orchestra, George Manos, conductor (wbgc)</p> <p><b>8</b> MONDAY 11:15 <b>Slide Overview:</b> <i>Vermeer</i> (wblh)</p> <p><b>9</b> TUESDAY 11:15 <b>Slide Overview:</b> <i>Vermeer</i> (wblh) 12:00 <b>Lecture:</b> <i>The Dutch Experience: "The Love Letter" and "Card Players Quarreling"</i> (eba) 1:00 <b>Gallery Talk:</b> <i>Homer Watercolors</i> (eb) 1:00 <b>Gallery Talk:</b> <i>Works by Jean Dubuffet from the Stephen Hahn Family Collection</i> (eb) 2:00 <b>Gallery Talk:</b> <i>Homer and the Creative Process</i> (eb) 2:00 <b>Slide Overview:</b> <i>Winslow Homer</i> (eba)</p> <p><b>10</b> WEDNESDAY 11:15 <b>Slide Overview:</b> <i>Vermeer</i> (wblh) 12:00 <b>Gallery Talk:</b> <i>Edouard Vuillard, 1868–1940</i> (eb) 12:30 <b>Film:</b> <i>Winslow Homer: The Nature of the Artist</i> (eba) 2:00 <b>Slide Overview:</b> <i>Winslow Homer</i> (eba)</p>
--	--

<p><b>11</b> THURSDAY 10:15 <b>Survey Course:</b> <i>Sixteenth-Century Northern Art</i> (eba) 11:15 <b>Slide Overview:</b> <i>Vermeer</i> (wblh) 12:30 <b>Film:</b> <i>Winslow Homer: The Nature of the Artist</i> (eba) 1:00 <b>Gallery Talk:</b> <i>"Lady With A Lute" by Thomas Wilmer Dewing</i> (wb) 2:00 <b>Slide Overview:</b> <i>Winslow Homer</i> (eba)</p> <p><b>12</b> FRIDAY 10:30 <b>Slide Overview:</b> <i>Winslow Homer</i> (eba) 11:15 <b>Slide Overview:</b> <i>Vermeer</i> (wblh) 12:00 <b>Gallery Talk:</b> <i>Works by Jean Dubuffet from the Stephen Hahn Family Collection</i> (eb) 12:30 <b>Film:</b> <i>Winslow Homer: The Nature of the Artist</i> (eba) 1:00 <b>Gallery Talk:</b> <i>"Lady With A Lute" by Thomas Wilmer Dewing</i> (wb) 2:00 <b>Gallery Talk:</b> <i>The Romance of the Harlequin: Picasso's "Family of Saltimbanques"</i> (eb)</p> <p><b>13</b> SATURDAY 10:15 <b>Survey Course:</b> <i>Sixteenth-Century Northern Art</i> (eba) 11:15 <b>Slide Overview:</b> <i>Vermeer</i> (wblh) 12:00 <b>Gallery Talk:</b> <i>Homer Watercolors</i> (eb) 12:30 <b>Slide Overview:</b> <i>Winslow Homer</i> (eba) 2:00 <b>Gallery Talk:</b> <i>The Romance of the Harlequin: Picasso's "Family of Saltimbanques"</i> (eb) 2:30 <b>Films:</b> <i>The True Story of Artaud the Momo</i> (eba)</p> <p><b>14</b> SUNDAY 11:15 <b>Slide Overview:</b> <i>Winslow Homer</i> (eba) 12:00 <b>Gallery Talk:</b> <i>Homer Watercolors</i> (eb) 1:00 <b>Film:</b> <i>Winslow Homer: The Nature of the Artist</i> (eba) 2:00 <b>Slide Overview:</b> <i>Vermeer</i> (wblh) 2:00 <b>Gallery Talk:</b> <i>"Lady With A Lute" by Thomas Wilmer Dewing</i> (wb) 4:00 <b>Lecture:</b> <i>Free at Last: Images of Emancipation in the Era of Winslow Homer</i> (eba) 7:00 <b>Concert:</b> Hermann Prey, baritone and Michael Endres, piano (wbgc)</p> <p><b>15</b> MONDAY 11:15 <b>Slide Overview:</b> <i>Vermeer</i> (wblh)</p> <p><b>16</b> TUESDAY 11:15 <b>Slide Overview:</b> <i>Vermeer</i> (wblh) 12:00 <b>Lecture:</b> <i>At Home: "Woman Holding A Balance" and "The Dissolute Household"</i> (eba) 2:00 <b>Gallery Talk:</b> <i>"Lady with a Lute" by Thomas Wilmer Dewing</i> (wb) 2:00 <b>Slide Overview:</b> <i>Winslow Homer</i> (eba)</p>	<p><b>17</b> WEDNESDAY 11:15 <b>Slide Overview:</b> <i>Vermeer</i> (wblh) 12:00 <b>Gallery Talk:</b> <i>Homer Watercolors</i> (eb) 12:30 <b>Film:</b> <i>Winslow Homer: The Nature of the Artist</i> (eba) 2:00 <b>Slide Overview:</b> <i>Winslow Homer</i> (eba)</p> <p><b>18</b> THURSDAY 11:15 <b>Slide Overview:</b> <i>Vermeer</i> (wblh) 12:30 <b>Film:</b> <i>Winslow Homer: The Nature of the Artist</i> (eba) 1:00 <b>Gallery Talk:</b> <i>"Lady with a Lute" by Thomas Wilmer Dewing</i> (wb) 2:00 <b>Slide Overview:</b> <i>Winslow Homer</i> (eba)</p> <p><b>19</b> FRIDAY 10:30 <b>Slide Overview:</b> <i>Winslow Homer</i> (eba) 11:15 <b>Slide Overview:</b> <i>Vermeer</i> (wblh) 12:00 <b>Gallery Talk:</b> <i>Homer Watercolors</i> (eb) 12:30 <b>Film:</b> <i>Winslow Homer: The Nature of the Artist</i> (eba) 2:00 <b>Gallery Talk:</b> <i>The Romance of the Harlequin: Picasso's "Family of Saltimbanques"</i> (eb)</p> <p><b>20</b> SATURDAY 11:00 <b>Symposium:</b> <i>Vermeer</i> (eba)</p> <p><b>21</b> SUNDAY 11:15 <b>Slide Overview:</b> <i>Winslow Homer</i> (eba) 1:00 <b>Film:</b> <i>Winslow Homer: The Nature of the Artist</i> (eba) 2:00 <b>Slide Overview:</b> <i>Vermeer</i> (wblh) 4:00 <b>Lecture:</b> <i>Women and Men at Court, In the Villa Garden, On the Land</i> (eba) 6:00 <b>Films:</b> <i>A Venetian Night and Isle of the Blessed</i> (eba) 7:00 <b>Concert:</b> Aaron Rosand, violin and Hugh J. Sung, piano (wbgc)</p> <p><b>22</b> MONDAY 11:15 <b>Slide Overview:</b> <i>Vermeer</i> (wblh)</p> <p><b>23</b> TUESDAY 11:15 <b>Slide Overview:</b> <i>Vermeer</i> (wblh) 12:00 <b>Lecture:</b> <i>Out and About: "The View of Delft" and "The Burger of Delft"</i> (eba) 2:00 <b>Slide Overview:</b> <i>Winslow Homer</i> (eba)</p> <p><b>24</b> WEDNESDAY 11:15 <b>Slide Overview:</b> <i>Vermeer</i> (wblh) 12:00 <b>Gallery Talk:</b> <i>Introducing Art: Reading Dutch Genre</i> (wb) 12:30 <b>Film:</b> <i>Winslow Homer: The Nature of the Artist</i> (eba) 2:00 <b>Slide Overview:</b> <i>Winslow Homer</i> (eba)</p> <p><b>25</b> THURSDAY 11:15 <b>Survey Course:</b> <i>Seventeenth-Century Art in Italy</i> (eba) 12:30 <b>Film:</b> <i>Winslow Homer: The Nature of the Artist</i></p>
--	--

<p>1:00 <b>Gallery Talk:</b> <i>"The Rape of Europa" by Caesar van Everdingen</i> (wb) 2:00 <b>Slide Overview:</b> <i>Winslow Homer</i> (eba)</p> <p><b>26</b> FRIDAY 10:30 <b>Slide Overview:</b> <i>Winslow Homer</i> (eba) 11:15 <b>Slide Overview:</b> <i>Vermeer</i> (wblh) 12:30 <b>Film:</b> <i>Winslow Homer: The Nature of the Artist</i> (eba) 1:00 <b>Gallery Talk:</b> <i>"The Rape of Europa" by Caesar van Everdingen</i> (wb)</p> <p><b>27</b> SATURDAY 10:15 <b>Survey Course:</b> <i>Seventeenth-Century Art in Italy</i> (eba) 11:15 <b>Slide Overview:</b> <i>Vermeer</i> (wblh) 12:00 <b>Gallery Talk:</b> <i>Introducing Art: Reading Dutch Genre</i> (wb) 12:30 <b>Slide Overview:</b> <i>Winslow Homer</i> (eba) 2:30 <b>Films:</b> <i>Short Films by the Brothers Quay</i> (including <i>Tales from the Vienna Woods, The Comb, DeArtificiali Perspectiva, Are We Still Married, and Street of Crocodiles</i>) (eba)</p> <p><b>28</b> SUNDAY 11:15 <b>Slide Overview:</b> <i>Winslow Homer</i> (eba) 12:00 <b>Gallery Talk:</b> <i>Introducing Art: Reading Dutch Genre</i> (wb) 1:00 <b>Film:</b> <i>Winslow Homer: The Nature of the Artist</i> (eba) 2:00 <b>Slide Overview:</b> <i>Vermeer</i> (wblh) 2:00 <b>Gallery Talk:</b> <i>"The Rape of Europa" by Caesar van Everdingen</i> (wb) 4:00 <b>Lecture:</b> <i>Listening to Pictures</i> (eba) 6:00 <b>Film:</b> <i>Institute Benjamenta</i> (eba) 7:00 <b>Concert:</b> Philip Thomson, piano (wbgc)</p> <p><b>29</b> MONDAY 11:15 <b>Slide Overview:</b> <i>Vermeer</i> (wblh)</p> <p><b>30</b> TUESDAY 11:15 <b>Slide Overview:</b> <i>Vermeer</i> (wblh) 12:00 <b>Lecture:</b> <i>In the Studio: "The Art of Painting" and "The Drawing Lesson"</i> (eba) 2:00 <b>Gallery Talk:</b> <i>"The Rape of Europa" by Caesar van Everdingen</i> (wb)</p> <p><b>31</b> WEDNESDAY 11:15 <b>Slide Overview:</b> <i>Vermeer</i> (wblh) 12:00 <b>Gallery Talk:</b> <i>Introducing Art: Reading Dutch Genre</i> (wb) 12:30 <b>Film:</b> <i>Peter Eisenman: Making Architecture Move</i> (eba)</p>	<p><b>Gallery Talks</b> Talks are given by education division lecturers and National Gallery of Art staff. Unless otherwise noted, talks begin in either the Rotunda of the West Building (wb) or at the ground level art information desk in the East Building (eb). Slide talks will be given in the West Building lecture hall (wblh) and the East Building auditorium (eba). Gallery talks are divided into several categories: <i>Focus: The Permanent Collection</i> includes traditional theme-based tours of objects in the National Gallery of Art's collections. <i>Special Exhibitions</i> discusses works of art on view in temporary exhibitions. <i>Introducing Art</i> is designed for beginners, as an approach to understanding the language, techniques, and subjects of the visual arts. <i>Curators, Conservators, and Other Specialists</i> presents the expertise of National Gallery of Art staff on a regular basis.</p> <p><b>Focus: The Permanent Collection</b> <i>Edouard Vuillard, 1868–1940</i> (20 minutes). Eric Denker, lecturer. January 2, 6, 7, and 10 at noon (eb) <i>"Peasants Celebrating Twelfth Night" by David Teniers II</i> (Ailsa Mellon Bruce Fund) (20 minutes). James Harper, graduate lecturing fellow. January 4, 5, and 6 at 2:00 (wb) <i>The Romance of the Harlequin: Picasso's "Family of Saltimbanques"</i> (40 minutes). Margaret Doyle, graduate lecturing fellow. January 12, 13, and 19 at 2:00 (eb) <i>"Lady With a Lute" by Thomas Wilmer Dewing</i> (Gift of Dr. and Mrs. Walter Timme) (20 minutes). Wilford W. Scott, lecturer. January 11, 12, and 18 at 1:00 and January 14 and 16 at 2:00 (wb) <i>"The Rape of Europa" by Caesar van Everdingen</i> (on loan from the Collection of Mr. and Mrs. Michael Hornstein, Montreal) (20 minutes). Philip Leonard, lecturer. January 25 and 26 at 1:00 and January 28 and 30 at 2:00 (wb)</p>
--	---

# programs

## Gallery Talks

Talks are given by education division lecturers and National Gallery of Art staff. Unless otherwise noted, talks begin in either the Rotunda of the West Building (wb) or at the ground level art information desk in the East Building (eb). Slide talks will be given in the West Building lecture hall (wblh) and the East Building auditorium (eba). Gallery talks are divided into several categories:

*Focus: The Permanent Collection* includes traditional theme-based tours of objects in the National Gallery of Art's collections. *Special Exhibitions* discusses works of art on view in temporary exhibitions. *Introducing Art* is designed for beginners, as an approach to understanding the language, techniques, and subjects of the visual arts.

*Curators, Conservators, and Other Specialists* presents the expertise of National Gallery of Art staff on a regular basis.

*Focus: The Permanent Collection*  
*Edouard Vuillard, 1868–1940* (20 minutes). Eric Denker, lecturer. January 2, 6, 7, and 10 at noon (eb)

*"Peasants Celebrating Twelfth Night" by David Teniers II* (Ailsa Mellon Bruce Fund) (20 minutes). James Harper, graduate lecturing fellow. January 4, 5, and 6 at 2:00 (wb)

*The Romance of the Harlequin: Picasso's "Family of Saltimbanques"* (40 minutes). Margaret Doyle, graduate lecturing fellow. January 12, 13, and 19 at 2:00 (eb)

*"Lady With a Lute" by Thomas Wilmer Dewing* (Gift of Dr. and Mrs. Walter Timme) (20 minutes). Wilford W. Scott, lecturer. January 11, 12, and 18 at 1:00 and January 14 and 16 at 2:00 (wb)

*"The Rape of Europa" by Caesar van Everdingen* (on loan from the Collection of Mr. and Mrs. Michael Hornstein, Montreal) (20 minutes). Philip Leonard, lecturer. January 25 and 26 at 1:00 and January 28 and 30 at 2:00 (wb)

*"The Rape of Europa" by Caesar van Everdingen* (on loan from the Collection of Mr. and Mrs. Michael Hornstein, Montreal) (20 minutes). Philip Leonard, lecturer. January 25 and 26 at 1:00 and January 28 and 30 at 2:00 (wb)

*"The Rape of Europa" by Caesar van Everdingen* (on loan from the Collection of Mr. and Mrs. Michael Hornstein, Montreal) (20 minutes). Philip Leonard, lecturer. January 25 and 26 at 1:00 and January 28 and 30 at 2:00 (wb)

*"The Rape of Europa" by Caesar van Everdingen* (on loan from the Collection of Mr. and Mrs. Michael Hornstein, Montreal) (20 minutes). Philip Leonard, lecturer. January 25 and 26 at 1:00 and January 28 and 30 at 2:00 (wb)

*"The Rape of Europa" by Caesar van Everdingen* (on loan from the Collection of Mr. and Mrs. Michael Hornstein, Montreal) (20 minutes). Philip Leonard, lecturer. January 25 and 26 at 1:00 and January 28 and 30 at 2:00 (wb)

*"The Rape of Europa" by Caesar van Everdingen* (on loan from the Collection of Mr. and Mrs. Michael Hornstein, Montreal) (20 minutes). Philip Leonard, lecturer. January 25 and 26 at 1:00 and January 28 and 30 at 2:00 (wb)

## Special Exhibitions

*Winslow Homer: An Introductory Slide Overview* (45 minutes). Education Division staff. January 2–4, 9–11, 16–18, and 23–25 at 2:00; January 5, 12, 19, and 26 at 10:30; January 6, 13, and 27 at 12:30; and January 7, 14, 21, and 28 at 11:15 (eba)

*Vermeer: An Introductory Slide Overview* (30 minutes). Education Division staff. January 2–4, 6, 8–13, 15–19, 22–24, 26–27, and 29–31 at 11:15; January 7, 14, 21 and 28 at 2:00 (wblh)

*Dutch Cabinet Galleries* (45 minutes). Frances Feldman, lecturer. January 2 at 2:00; January 4 at noon (wb)

*Master Drawings From the Woodner Collections* (60 minutes). Frances Feldman, lecturer. January 3 and 5 at noon (eb)

*Homer and the Creative Process* (50 minutes). Eric Denker, lecturer. January 4 and 5 at 1:00 and January 7 and 9 at 2:00 (eb)

*Homer Watercolors* (50 minutes). Wilford W. Scott, lecturer. January 9 at 1:00 and January 13, 14, 17, and 19 at noon (eb)

*Works by Jean Dubuffet from the Stephen Hahn Family Collection* (50 minutes). Sally Shelburne, guest lecturer. January 9 at 1:00 and January 12 at noon (eb)

*Free at Last: Images of Emancipation in the Era of Winslow Homer* Karen Dalton, director and curator, The Image of the Black in American Art Research Project and Archive, Harvard University

*Reading Dutch Genre* (60 minutes). Philip Leonard, lecturer. January 24, 27, 28, and 31 at noon (wb)

*Women and Men at Court, In the Villa Garden, On the Land.* Mirka Beneš, associate professor, Graduate School of Design, Harvard University

*Listening to Pictures* Ellen Handler Spitz, Mary Cabot Putnam Fellow, The Bunting Institute, Radcliffe College, Cambridge, Massachusetts

*Mania for Maps* James Welu, director, The Worcester Art Museum

*Still and Not So Still Life in Vermeer* Celeste Brusati, associate professor of art history, University of Michigan, Ann Arbor

*Music in Vermeer and Steen: Harmony and Cacophony* Arthur K. Wheelock, Jr., curator, northern baroque painting, National Gallery of Art



Thomas Wilmer Dewing, *Lady with a Lute*, 1886, National Gallery of Art, Gift of Dr. and Mrs. Walter Timme

## Lectures

### Sunday Lectures

Lectures are given by National Gallery of Art staff and distinguished scholars at 4:00 in the East Building auditorium

*The Realities of the Studio or the Vexations of Art* Svetlana Alpers, professor emeritus University of California, Berkeley

*Free at Last: Images of Emancipation in the Era of Winslow Homer* Karen Dalton, director and curator, The Image of the Black in American Art Research Project and Archive, Harvard University

*Reading Dutch Genre* (60 minutes). Philip Leonard, lecturer. January 24, 27, 28, and 31 at noon (wb)

*Women and Men at Court, In the Villa Garden, On the Land.* Mirka Beneš, associate professor, Graduate School of Design, Harvard University

*Listening to Pictures* Ellen Handler Spitz, Mary Cabot Putnam Fellow, The Bunting Institute, Radcliffe College, Cambridge, Massachusetts

*Mania for Maps* James Welu, director, The Worcester Art Museum

*Still and Not So Still Life in Vermeer* Celeste Brusati, associate professor of art history, University of Michigan, Ann Arbor

*Music in Vermeer and Steen: Harmony and Cacophony* Arthur K. Wheelock, Jr., curator, northern baroque painting, National Gallery of Art

## Special Lecture Series

*Vermeer and Jan Steen: Two Pictures of Holland* Tuesdays at 12:00 East Building auditorium

H. Perry Chapman, associate professor, art history, University of Delaware, and co-curator for the exhibition *Jan Steen: Painter and Storyteller* (opens April 28, 1996)

These lectures contrast the enigmatic reflective paintings of Vermeer with Steen's comic storytelling, and consider these distinctive artistic personalities against the background of Dutch society. This free program is open to the public, but seating is limited.

*The Dutch Experience: "The Love Letter" and "Card Players Quarreling"*

*At Home: "Woman Holding a Balance" and "The Dissolute Household"*

*Out and About: "The View of Delft" and "The Burger of Delft"*

*In the Studio: "The Art of Painting" and "The Drawing Lesson"*

*Free at Last: Images of Emancipation in the Era of Winslow Homer* Karen Dalton, director and curator, The Image of the Black in American Art Research Project and Archive, Harvard University

*Reading Dutch Genre* (60 minutes). Philip Leonard, lecturer. January 24, 27, 28, and 31 at noon (wb)

*Women and Men at Court, In the Villa Garden, On the Land.* Mirka Beneš, associate professor, Graduate School of Design, Harvard University

*Listening to Pictures* Ellen Handler Spitz, Mary Cabot Putnam Fellow, The Bunting Institute, Radcliffe College, Cambridge, Massachusetts

*Mania for Maps* James Welu, director, The Worcester Art Museum

*Still and Not So Still Life in Vermeer* Celeste Brusati, associate professor of art history, University of Michigan, Ann Arbor

*Music in Vermeer and Steen: Harmony and Cacophony* Arthur K. Wheelock, Jr., curator, northern baroque painting, National Gallery of Art

- Legend**
- eb East Building, ground level art information desk
  - eba East Building auditorium
  - wb West Building Rotunda
  - wblh West Building lecture hall
  - wbgc West Building Garden Court

See listings under **Guided Tours** for daily tours of the collections and foreign language tours.



# programs

## Music at the Gallery

### Sunday Concert Series

Concerts take place at 7:00 Sunday evenings through June 30 and are open to the public, free of charge. Concertgoers are admitted to the West Garden Court on a first-come, first-served basis beginning at 6:00. The 6th Street and Constitution Avenue entrance to the West Building remains open for those arriving between 6:00 and 7:00, and the Garden Café is open until 6:30 on Sunday evenings for concertgoers. Concerts are broadcast four weeks after the performance on Sunday evenings at 7:00 on radio station WGTS 91.9-FM. For further information, call (202) 842-6941.

JANUARY 7  
National Gallery Orchestra,  
George Manos, *conductor*  
*Gala Viennese New Year Concert*

JANUARY 14  
Hermann Prey, *baritone*, and  
Michael Andres, *piano*  
Music by Schubert: *Winterreise*

JANUARY 21  
Aaron Rosand, *violin* and  
Hugh J. Sung, *piano*  
Music by Vivaldi, Bruch, Bach,  
and Wieniawski

JANUARY 28  
Philip Thomson, *piano*  
Music by Kuhlau, Chopin,  
Prokofieff, and Liszt

## Video Presentation

### Looking at Winslow Homer: "The Veteran in a New Field" and "Breezing Up" A Talk with the Curators

East Building small auditorium  
Continuous showings  
beginning at noon weekdays,  
all day Saturdays and Sundays  
(schedule subject to change)

A six-minute video program produced by the National Gallery of Art in conjunction with the exhibition explores Homer's painting process. Curators Nicolai Cikovsky, Jr. and Franklin Kelly discuss the changes Homer made to his paintings *The Veteran in a New Field* and *Breezing Up* revealing the layers of meaning in these apparently straightforward works of art.

## Guided Tours

### Introductory Tours

*Introduction: The West Building Collection*  
Monday–Saturday 10:30 and 12:30  
Sunday 12:30 and 4:30  
(no 10:30 tour on Wednesday and no 12:30 tour on Saturday)  
West Building Rotunda

*Introduction: The East Building Collection*  
Monday–Saturday 11:30 and 1:30  
Sunday 11:30, 1:30, and 3:30  
(no 11:30 tour on Wednesday and Saturday)  
East Building art information desk

*Introduction: The American Collection*  
Tuesday, Thursday, Saturday  
and Sunday 2:30  
West Building Rotunda

*Introduction: The Italian Renaissance Collection*  
Monday, Wednesday and  
Friday 2:30  
West Building Rotunda

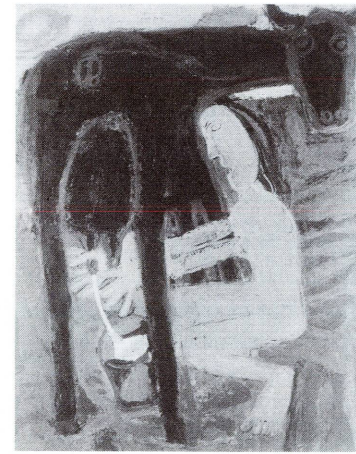
### Foreign Language Tours

Foreign language tours of the permanent collection are offered on Tuesday and Thursday. Tours of the West Building are at noon and begin in the Rotunda. Tours of the East Building are at 2:00 and begin at the art information desk.

January 2: French  
January 4: Spanish  
January 9: Spanish  
January 16: German  
January 18: Russian  
January 23: Italian  
January 25: Japanese

### Tours by Appointment

Tours of the permanent collection and special exhibitions, including tours with a sign language interpreter, can be arranged. Please call (202) 842-6247 or TDD (202) 842-6176. For school tours call (202) 842-6249.



Jean Dubuffet, *Grande traite solitaire*,  
1943, National Gallery of Art, Partial  
and Promised Gift of the Stephen Hahn  
Family Collection

## Audio Tours

### Permanent Collection

*Impressionism and Post-Impressionism*. "Inform," a digitized system that allows individualized access to interpretive commentary on paintings in the French impressionist and post-impressionist galleries, replaces the conventional taped audio tour. The self-selected approach lets the visitor choose the length of commentary on any or all of the works programmed into the "Inform" system. Narrated by Philip Conisbee, curator of French paintings.

*The Director's Tour*, narrated by Earl A. Powell III, discusses fifteenth- through early twentieth-century masterpieces and includes some of the Gallery's best-loved paintings.

"Inform" and audio tours are \$4.00 (\$3.50 for senior citizens, students, and groups of ten or more). They may be rented in the Rotunda, on the main floor of the West Building.

### Special Exhibitions

*Winslow Homer* is available at the entrance to the exhibition, narrated by Earl A. Powell III, director, and Nicolai Cikovsky, Jr., and Franklin Kelly, curators of American and British paintings, National Gallery of Art.

Audio tours for the special exhibitions are \$4.00 (\$3.50 for senior citizens, students, and groups of ten or more).

Amplified headsets and/or scripts are available to assist visitors with hearing impairments. To reserve audio tours for groups call (202) 842-6592.

## Publications

### Exhibition Catalogues

*Johannes Vermeer*  
\$19.95 (softbound)  
\$45.00 (hardbound)

*Winslow Homer*  
\$24.95 (softbound)  
\$60.00 (hardbound)

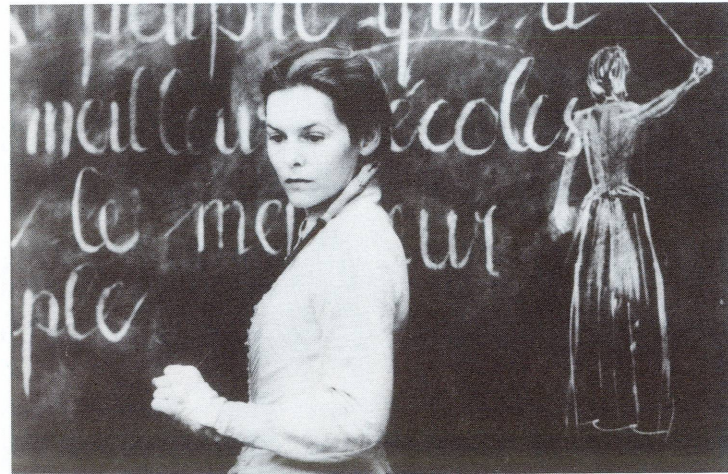
*John Singleton Copley in England*  
\$30.00 (softbound)  
\$50.00 (hardbound)

*The Touch of the Artist:  
Master Drawings from the  
Woodner Collections*  
\$39.95 (softbound)  
\$60.00 (hardbound)

Available from the National Gallery of Art publications service.  
Sales Information: (202) 842-6466  
Mail Order: (301) 322-5900

### Gallery Guide Booklets

Tour the permanent collection with self-guided brochures on sale in the Gallery shops. Family guides with children's games and activities include *West Building Highlights* of ten popular works from the Renaissance through impressionism, *Portraits and Personalities* about French and American painting and sculpture, and *Shapes and Patterns* concerning the East Building's modern art and architecture. Adult walking tours, also suitable for armchair travelers, include *French Painting, Landscape Paintings*, and *"I Am Still Learning: Late Works by Masters"*. Each guide: \$2.50.



From *Institute Benjamenta*, (Brothers  
Quay, 1994), January 28 at 6:00

## Film Programs

East Building auditorium

Listening devices are available at the art information desk for visitors with hearing impairments.

In conjunction with the *Winslow Homer* exhibition, a half-hour film produced by the National Gallery of Art, *Winslow Homer: The Nature of the Artist*, will be shown Wednesday through Friday at 12:30 and Sunday at 1:00 from January 3 through January 28 (except Friday, January 5).

*All the Vermeers in New York*, a narrative film produced by Jon Jost and American Playhouse, will be shown January 5 through 7 in association with *Johannes Vermeer*. The film follows several days in the lives of three young women who share a strange adventure with a Manhattan stock broker whose only relief from the stress of the trading floor is the Vermeer gallery at The Metropolitan Museum of Art.

### Max Reinhardt

Two silent films by Austrian theater and film director Max Reinhardt (1873–1943), whose inventive handling of lighting and mise-en-scène influenced the future course of expressionism in German cinema, will be shown January 21 in association with Goethe-Institut Washington.

### The Brothers Quay

The Washington premiere of *Institute Benjamenta*, the first feature film of the Brothers Quay, will take place on Sunday, January 28, at 6:00. The Quays are best known for their dreamlike short films, reminiscent of German expressionist cinema, which employ puppetry and animation to explore the shadowy recesses of the soul. The Quays are scheduled to appear at the screening on January 28.

### January Films

*Winslow Homer: The Nature of the Artist* (National Gallery of Art, 1986, 29 minutes); January 3, 4, 10–12, 17–19, and 24–26 at 12:30 and January 7, 14, 21, and 28 at 1:00.

*All the Vermeers in New York* (Jon Jost, 1990, 87 minutes); January 5 at 12:30, January 6 at 2:30, and January 7 at 6:00.

*The True Story of Artaud the Môme* (Gérard Mordillat, 1993, 170 minutes); January 13 at 2:30.

*A Venetian Night* (Max Reinhardt, 1913, 47 minutes) and *Isle of the Blessed* (Max Reinhardt, 1913, 60 minutes); January 21 at 6:00.

*Peter Eisenman: Making Architecture Move* (Michael Blackwood, 1995, video, 58 minutes); January 31 at 12:30.

*Short Films by the Brothers Quay* (including *Tales from the Vienna Woods*, *The Comb*, *De Artificiali Perspectiva*, *Are We Still Married*, and *Street of Crocodiles*, 1986–1993, ca. 80 minutes); January 27 at 2:30.

*Institute Benjamenta* (Brothers Quay, 1994, 105 minutes); January 28 at 6:00.

# et cetera

## Restaurant Highlights

### Concourse Buffet Concourse

Enjoy a continental breakfast served Monday through Saturday, 10:00 to 11:00 and Sunday, 11:00 to 12:00, or come for lunch after 11:00.

### Garden Café West Building, ground floor

In celebration of the *Johannes Vermeer* exhibition, the menu features Dutch as well as American fare, and will remain open until 6:30 on Friday, Saturday, and Sunday.

### Cascade Espresso Bar Concourse

Take an afternoon break near the cascade fountain. Choose from gourmet coffee, espresso, cappuccino, or other refreshments, plus an array of light dishes and desserts.

### Terrace Café East Building, upper level

After visiting *Winslow Homer*, the exhibition, come to the Terrace Café, where the menu honors one of America's greatest artists and the New England he loved to paint. Traditional corn chowder, chicken pot pie, the Chef's baked beans, and apple crisp are among the specialties being offered. For reservations call (202) 789-3201.

## Restaurant Hours

### Concourse Buffet

*Concourse*  
Monday–Friday 10:00–3:00  
Saturday 10:00–4:00  
Sunday 11:00–4:00

### Garden Café

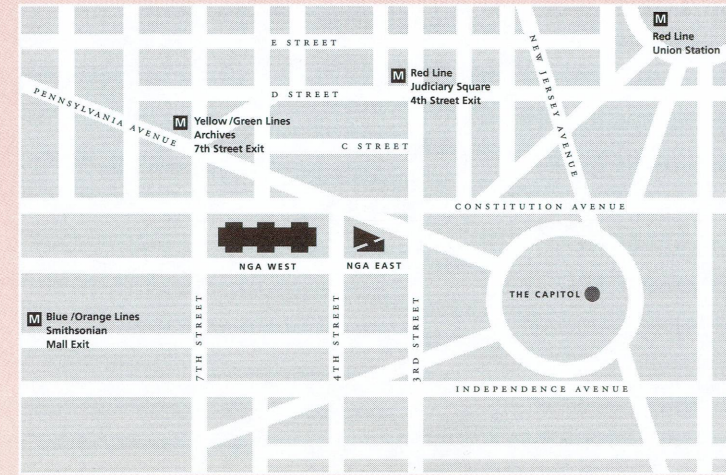
*West Building, ground floor*  
Reservations (202) 789-3202  
Monday–Thursday 11:30–3:00  
Friday and Saturday 11:30–6:30  
Sunday 12:00–6:30

### Cascade Espresso Bar

*Concourse*  
Monday–Friday 12:00–4:30  
Saturday 12:00–4:30  
Sunday 12:00–5:30

### Terrace Café

*East Building, upper level*  
Reservations (202) 789-3201  
Monday–Friday 11:30–3:00  
Saturday 11:30–3:00  
Sunday 12:00–4:00



## Gallery Shops

Two books are being offered in the Gallery Shops in conjunction with the Vermeer exhibition. *Vermeer and the Art of Painting* by Arthur K. Wheelock, Jr., curator, northern baroque painting, National Gallery of Art, (\$45.00) examines the means by which Vermeer achieved his remarkable pictorial effects. *Dutch Paintings of the Seventeenth Century*, also by Wheelock, (\$85.00) explores the works in the Gallery collection by masters of the Golden Age of Dutch art. This volume is part of the Systematic Catalogue of the National Gallery of Art's collections.

## Gallery Information

The National Gallery of Art and its collections belong to the people of the United States of America. European and American paintings, sculpture, decorative arts, and selected works on paper are displayed in the permanent collection galleries, and temporary exhibitions of art from countries and cultures throughout the world are presented on a regular basis. Works of art on paper not on exhibit are available for viewing by appointment, weekdays. Call (202) 842-6380. Admission is always free.

The Matisse cut-outs are on view only between 10:00 and 2:00 weekdays and Saturday, noon to 4:00 on Sundays.

### Hours

Monday–Saturday 10 am to 5 pm  
Sunday 11 am to 6 pm  
National Gallery of Art is closed  
Monday, January 1

**For general information**  
Call (202) 737-4215

### Location

The Gallery is located between 3rd and 7th Streets, NW, on Constitution Avenue. The nearest Metro stops are **Judiciary Square** on the Red Line, **Archives** on the Yellow/Green Lines, and **Smithsonian** on the Blue/Orange Lines. Metro bus

stops are located on 4th Street and 7th Street. The East and West Buildings are connected by an all-weather underground passage with a moving walkway. Entrances to the West Building are on the Mall, on Constitution Avenue at 6th Street, on 4th Street, and on 7th Street (Saturday and Sunday only). The entrance to the East Building is on 4th Street.

## Accessibility

Ramps for wheelchairs and strollers are located at the 6th Street entrance to the West Building on Constitution Avenue, NW, and at the 4th Street entrance to the East Building. Wheelchairs and strollers are available at all entrances. For information about access to public areas and galleries, refer to the *Brief Guide and Plan* of the East and West Buildings at the art information desks. Limited parking is available in front of the East Building for vehicles displaying the international symbol of accessibility (♿).

Assistive listening devices are available on a free-loan basis from the art information desk in the East Building for the large auditorium, and from a self-service unit in the wall to the left of the entrance to the East Building small auditorium.

Sign-language interpretation is available with three weeks' notice. Call (202) 842-6247 or the TDD line given below.

### For general information on services

Call (202) 842-6690  
Weekdays 9:00 am to 5:00 pm

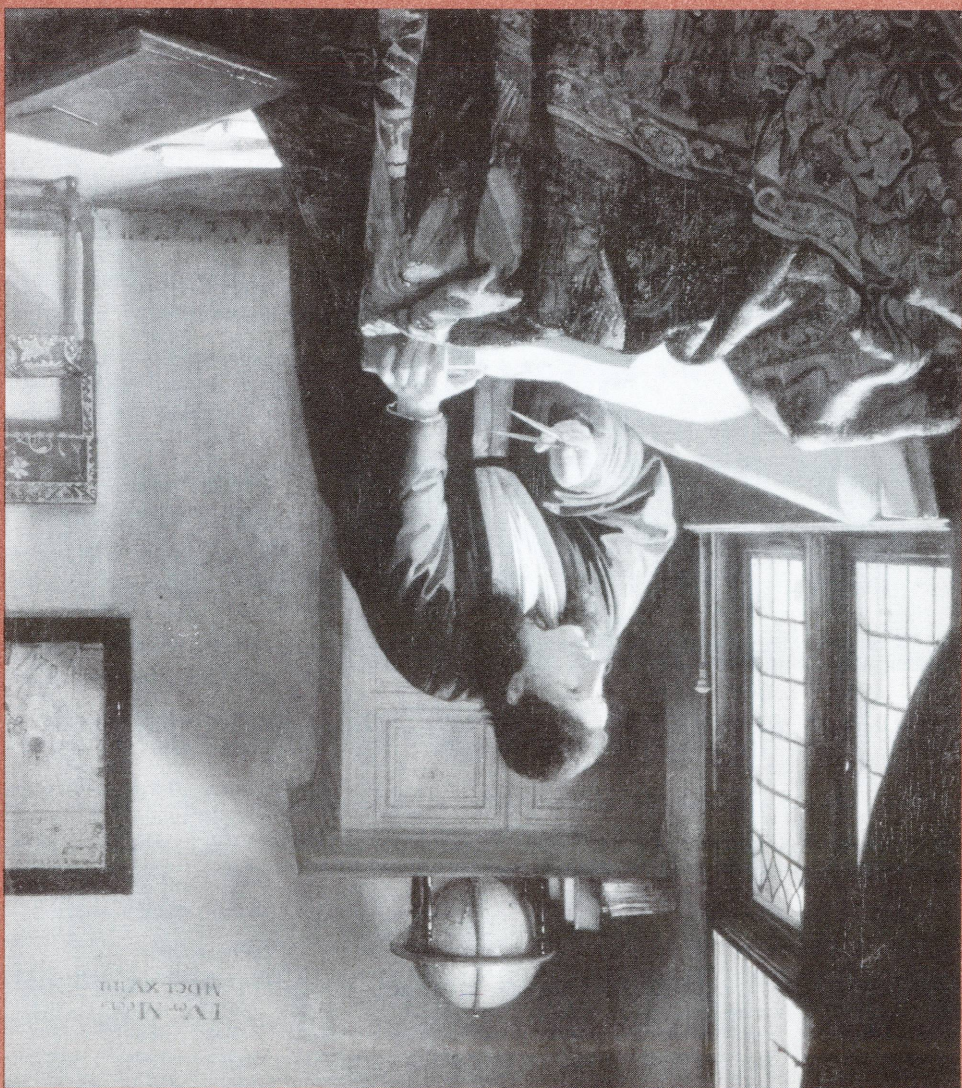
### Telecommunications Device for the Deaf (TDD)

Call (202) 842-6176  
Weekdays 9:00 am to 5:00 pm

A TDD has been installed at the public telephone adjacent to the stamp machine on the concourse level. This TDD is located to accommodate wheelchair users.



January calendar 1996



National  
Gallery of Art,  
Washington

National Gallery of Art  
Washington, DC 20565

*Delivery may be delayed by bulk-rate mailing.*

**ON THE COVER:**

Johannes Vermeer, *The Geographer*,  
c. 1668–1669, Städelsches Kunstinstitut,  
Frankfurt am Main

# January