



National Gallery of Art

CALENDAR OF EVENTS

June 1988

JUNE

Monday, May 30
through
Sunday, June 5

Monday, June 6
through
Sunday, June 12

Monday, June 13
through
Sunday, June 19

Monday, June 20
through
Sunday, June 26

COLLECTION HIGHLIGHTS

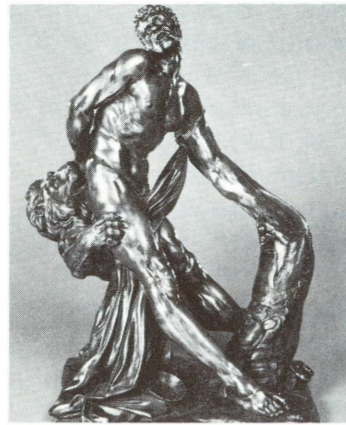
Brief gallery talks given by Education Department lecturers on a single work of art. Reproductions of the work discussed may be purchased in the Gallery's sales shops; a written text is available without charge.

Tuesday through Saturday 12:00 p.m.
Sunday 2:00 p.m.

May 31-June 5

Pierre Puget
Milo of Croton
(Andrew W. Mellon Fund)
West Building
Ground Floor North 12

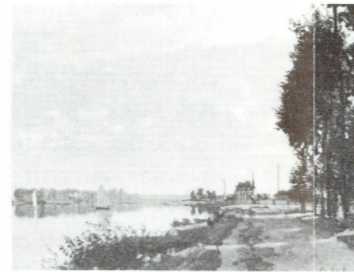
John Cogswell, Lecturer



June 7-June 12

Claude Monet
Argenteuil
(Ailsa Mellon Bruce Collection)
East Building, Ground Floor

Philip Leonard, Lecturer



June 14-June 19

Edouard Manet
Gare Saint-Lazare
(Gift of Horace Havemeyer in memory of his mother, Louise W. Havemeyer)
West Building, Gallery 80

Jill Steinberg, Lecturer



June 21-June 26

Canaletto
Venice, the Quay of the Piazzetta
(Gift of Mrs. Barbara Hutton)
West Building, Gallery 32

Frances Feldman, Lecturer



SPECIAL TOURS

One-hour thematic tours given by Education Department lecturers.

Tuesday through Saturday 1:00 p.m.
Sunday 2:30 p.m.

May 31-June 5

The East Building's Tenth Anniversary: Its Architecture and Commissioned Works
East Building
Ground Floor Lobby

William J. Williams, Lecturer

June 7-June 12

American Light: Contemporaries of Fitz Hugh Lane
West Building, Rotunda

Donna Mann, Lecturer

June 14-June 19

Sweden: A Royal Treasury 1550-1700
East Building
Ground Floor Lobby

Susan M. Arensberg, Lecturer

June 21-June 26

The Flag Paintings of Childe Hassam
East Building
Ground Floor Lobby

Wilford W. Scott, Lecturer

FILMS

Free films on art and feature films related to special exhibitions. Unreserved seats are available on a first-come, first-served basis.

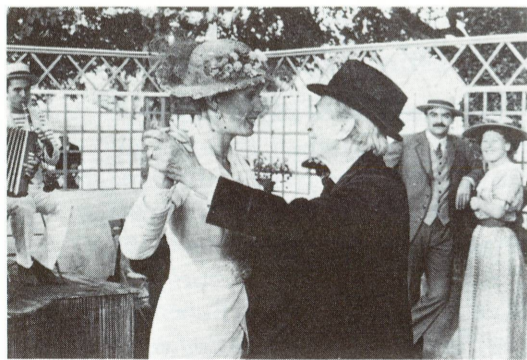
East Building Auditorium

June 1-June 5

A Sunday in the Country
(Bertrand Tavernier, 1984, 94 min.)
Wed. through Sat. 12:30
Sun. 6:30

The Road to Bresson
(Leo DeBorer, 1983, 53 min.)
Sat. 3:00

A Sunday in the Country, 1984, by Bertrand Tavernier, to be shown June 1-5



June 8-June 12

Point Counterpoint: The Life and Work of Georges Seurat
(BBC/RM Arts, 1980, 70 min.)
Wed. through Sat. 12:30
Sun. 1:00

L'Argent
(Robert Bresson, 1983, 85 min.)
Sat. 2:30
Sun. 6:00

June 15-June 19

Paul Gauguin - The Savage Dream (National Gallery of Art, 1988, 30 min.)
Wed. through Sat. 12:30
Sun. 1:00

The Horse of Pride
(Claude Chabrol, 1980, 118 min.)
Sat. 2:30
Sun. 6:00

June 21-June 26

In a Brilliant Light: van Gogh in Arles
(Gene Searchinger, 1984, 58 min.)
Wed. through Sat. 12:30
Sun. 1:00

Paul Gauguin - The Savage Dream (National Gallery of Art, 1988, 30 min.)
Tues. through Fri. 2:00

The Horse of Pride
(Claude Chabrol, 1980, 118 min.)
Sat. 2:30
Sun. 6:00



Paul Gauguin, *The Young Christian Girl*. 1894, Sterling and Francine Clark Art Institute, Williamstown, Massachusetts

SUNDAY LECTURES

Free lectures given by distinguished visiting scholars. No reservations needed, but seating is limited.

Sunday 4:00 p.m.

East Building Auditorium

June 5

Rembrandt's Earliest Self-Portraits: Emotion, Temperament, and the Imagination

H. Perry Chapman
Assistant Professor of Art History
University of Delaware
Newark, Delaware

June 12

Van Gogh's Agony

Lauren Soth
Professor of Art History
Carleton College
Northfield, Minnesota

June 19

Ten Years of Exhibitions at the National Gallery

Mark A. Leithauser
Deputy Chief of Design
National Gallery of Art
Washington

June 26

Raising the Roof: Baroque Ceiling Painting from Carracci to Tiepolo

Charles Scribner III
MacMillan Publishing Company
New York, New York

SUNDAY CONCERTS

Free concerts by the National Gallery Orchestra, recitalists, and ensembles. Unreserved seats available from 6:00 p.m. All concerts are broadcast live by WGMS 570 AM and 103.5 FM.

Sunday 7:00 p.m.

West Building, West Garden Court

June 5

Gregori Volokhine, *Pianist*

Works by Beethoven, Schumann, Ginastera, Franck, and Ravel

June 12

National Gallery Orchestra
George Manos, *Conductor*
Klaus Hellwig, *German Pianist*

Works by Bach, Hindemith, and Henze

In honor of the *Masterworks from Munich* exhibition

June 19

Louis Lortie, *Canadian Pianist*

Works by Chopin and Ravel

June 26

Jean and Kenneth Wentworth, *Piano Duo*

Works by Mozart, Schubert, Debussy, Persichetti, and Gottschalk

Extended Summer Hours

The National Gallery is open until 9 p.m. each day through Monday of Labor Day weekend, September 5. Food service hours are being extended in the Terrace Café until 7:00 p.m. and in the Concourse Buffet until 6:30 p.m.

**Art History Course
Escape from Convention:
Gauguin and His Time**

In conjunction with the exhibition *The Art of Paul Gauguin*, the Education Department continues its four-week course discussing attempts by European artists to overcome the conservative traditions of late nineteenth- and early twentieth-century art. Special emphasis will be given to Gauguin's seminal role in this endeavor. His work will also be considered with other artists' expressions of interest in non-Western and pre-classical cultures. These one-hour free slide lectures will be given in the East Building Auditorium on Tuesdays at 12:30 p.m. and repeated on Saturdays at 11:00 a.m. No advance reservations are necessary, but seating is limited.

June 7, 11	<i>Breaking the Mold: German Expressionism and Alternative Traditions</i>
June 14, 18	<i>The Golden Age from Gauguin to Matisse</i>

INTRODUCTORY TOURS**Introduction to the
West Building Collections**

Monday through Saturday 3:00 p.m.
Sunday 5:30 p.m.
West Building, Rotunda

**Introduction to the
East Building Collections**

Monday through Saturday 11:30 a.m.
Sunday 12:30 p.m.
East Building, Ground Floor Lobby

GRAPHICS EXHIBITION**Drawings on Stone:
Early European Lithography**

June 12- September 4, 1988
West Building, Ground Floor

This exhibition explores various early phases of the use of the technique of lithography, invented between the years 1796 and 1798 by Bavarian writer and printer, Aloys Senefelder. Beginning with a selection of lithographs from the early British publication, *Specimens of Polyautography*, and examples illustrating the development of the medium in Germany and Russia, the show concludes with examples of the full expression of the art in France in the 1820s and 1830s. The exhibition is made possible by a grant from Maxwell Communication Corporation.

Film Programs

East Building Auditorium

"The Films of Robert Bresson," a series which began in April, will conclude on June 11 and June 12 with *L'Argent* (1983). Joel Siegel, professor of literature and film at Georgetown University, will introduce this film on Saturday, June 11 at 2:30.

Claude Chabrol's *The Horse of Pride* (1980), the story of a peasant family in Brittany at the turn of the century, will be shown the last two weekends in June in conjunction with the exhibition *The Art of Paul Gauguin*.

Paul Gauguin—The Savage Dream, a new half-hour film produced in association with the Gauguin exhibition, will be shown regularly in the auditorium beginning June 15. Please see the reverse side for additional information.

Current Exhibition Catalogues

<i>The Human Figure in Early Greek Art</i>	\$14.95
<i>Sweden: A Royal Treasury 1550-1700</i>	\$14.95
<i>The Art of Paul Gauguin</i>	\$27.50 softcover \$69.95 hardcover
<i>The Flag Paintings of Childe Hassam</i>	\$19.95
<i>Paintings by Fitz Hugh Lane</i>	\$19.95 softcover \$29.95 hardcover
<i>Masterworks from Munich</i>	\$19.95

Available from the
National Gallery Publication Service
Sales Information (202) 842-6466
Mail Orders (202) 842-6465

Foreign Language Tours

Regularly scheduled foreign language tours of the West Building are offered on Tuesdays at noon beginning in the Rotunda. The June schedule is as follows: June 7 *French*; June 14 *Spanish*; June 21 *German*; June 28 *Italian*.

Recorded Tour of West Building

A recorded tour of the West Building collections, narrated by J. Carter Brown, is available at the Ground Floor Sales Area during Gallery hours.



Richard Parkes Bonington, *Rue du Gros-Horloge, Rouen, 1824*, National Gallery of Art, Rosenwald Collection

The Art of Paul Gauguin

Through July 31, 1988
East Building
Mezzanine and Upper Level

The Art of Paul Gauguin includes more than 240 paintings, pieces of sculpture, and works on paper in addition to a number of rarely seen ceramics by the celebrated post-impressionist master. A catalogue, fully illustrated in color, accompanies the exhibition with essays by curators of the show, Charles F. Stuckey, curator of twentieth-century art, The Art Institute of Chicago; Richard Brettell, director, Dallas Museum of Art; Claire Frèches-Thory, curator, and Françoise Cachin, director, the Musée d'Orsay. After its Washington showing, *The Art of Paul Gauguin* will travel to The Art Institute of Chicago (September 17-December 11, 1988) and to the Galeries nationales du Grand Palais, Paris (January 10-April 20, 1989). The exhibition is jointly organized by the National Gallery, The Art Institute of Chicago, and the Réunion des musées nationaux. It is made possible by AT&T and is supported by an indemnity from the Federal Council on the Arts and the Humanities.

An automated slide overview of the exhibition will be shown at scheduled times



Paul Gauguin, *Sculpture from the House of Pleasure* (right base), 1902, Musée d'Orsay, Paris

**The Flag Paintings
of Childe Hassam**

Through July 17, 1988
East Building, Ground Floor

The Flag Paintings of Childe Hassam is the first exhibition in 60 years to focus on this subject and is the second in a series of exhibitions at the National Gallery concentrating on important aspects of American impressionism. During the First World War Hassam created a series of paintings depicting the flag-decorated streets of New York City as a theme to explore elements of composition and complexities of shape, color, and light. The exhibition has been organized by Ilene Susan Fort, associate curator of American art at the Los Angeles County Museum of Art, who also wrote the accompanying scholarly catalogue. The exhibition and its counterparts in the National Gallery series, *William Merritt Chase: Summers at Shinnecock 1891-1902* and *John Twachtman*, are supported by Bell Atlantic.



Orazio Gentileschi, *The Conversion of the Magdalen*, 1612, Alte Pinakothek, Munich

**Masterworks from Munich:
Sixteenth- to Eighteenth-Century
Paintings from the Alte Pinakothek**

Through September 5, 1988
West Building, Paul Mellon Galleries

Sixty-two paintings by major Italian, Flemish, Dutch, German, Spanish, and French artists from the sixteenth through the eighteenth centuries are on loan from the Alte Pinakothek in Munich, one of the greatest public collections in Europe. Included in the selection are Rubens' *The Rape of the Daughters of Leucippus*, Rembrandt's *Risen Christ*, Titian's *Vanity*, El Greco's *The Disrobing of Christ*, and Fragonard's *Girl with a Dog* as well as important examples of work by Guardi, Tintoretto, Jan Brueghel the Elder, Van Dyck, Ruisdael, Elsheimer, Murillo, Velázquez, Poussin, and Boucher. The exhibition, which has been organized by the Cincinnati Art Museum and the National Gallery, is accompanied by a fully illustrated catalogue by Beverly Louise Brown, guest curator of southern baroque painting, and Arthur K. Wheelock, Jr., curator of northern baroque painting at the National Gallery. It will be on view in Cincinnati from October 25, 1988, to January 8, 1989. The exhibition is supported by the foreign office of the Federal Republic of Germany, by The German-American Cultural Fund, Inc., and by an indemnity from the Federal Council on the Arts and the Humanities. Lufthansa German Airlines is the official carrier for the exhibition.

Paintings by Fitz Hugh Lane

Through September 5, 1988
West Building, Central Gallery

Focusing on the finest work by this nineteenth-century American artist, founder of the luminist movement, *Paintings by Fitz Hugh Lane* includes a selection of 61 paintings dating from 1844 to 1864. Sequential series are featured: the early groups about Cape Ann, the Gloucester waterfront, the Boston Harbor series, the Maine coast, the later twilight pictures, and the final Brace's Rock group. The nucleus of the show has been selected from the permanent holdings of the Museum of Fine Arts, Boston, and the Cape Ann Historical Association,

**Sweden: A Royal Treasury
1550-1700**

Through September 5, 1988
East Building, Mezzanine Level

This exhibition of more than 100 royal objects comes from an extraordinary chapter in European history. Featuring examples of decorative arts from the Swedish royal collections, the show demonstrates how works of art of great aesthetic merit were gathered and used by the kings and queens of sixteenth- and seventeenth-century Sweden. Included in the exhibition are royal regalia, armor and inlaid firearms, royal costumes, drawings, enamels, sculpture, and other objects from Swedish royal collections.

The exhibition is organized by the National Gallery and The Minneapolis Institute of Arts and is accompanied by a fully illustrated catalogue. The exhibition is made possible through contributions from The Boeing Company, the Federation of Swedish Industries, and the Swedish Government. It is supported by an indemnity from the Federal Council on the Arts and the Humanities. After its Washington debut, the exhibition will travel to The Minneapolis Institute of Arts (October 9, 1988-January 1, 1989).

Gloucester, Massachusetts, supplemented by loans from other American public and private collections. The exhibition, organized by noted American art scholar John Wilmerding, deputy director of the National Gallery, is accompanied by a fully illustrated catalogue with essays by Wilmerding, Elizabeth Ellis, Franklin Kelly, Earl A. Powell III, and Erik Ronnberg, Jr. It will travel to the Museum of Fine Arts, Boston (October 5-December 31, 1988). The exhibition is made possible by a grant from GTE Corporation.



Shield, made for Erik XIV, c. 1560, Royal Armory, Stockholm

nity from the Federal Council on the Arts and the Humanities. After its Washington debut, the exhibition will travel to The Minneapolis Institute of Arts (October 9, 1988-January 1, 1989).

CLOSING EXHIBITION**The Human Figure
in Early Greek Art**

Through June 12, 1988
East Building, Concourse Level

This exhibition is made up of 67 works of Greek art from the tenth to the fifth centuries B.C., the majority of which have never before traveled to the United States. It explores the treatment of the human figure during a critical formative era, which culminated in Greek classicism and became the basis for Western art thereafter.

The marble, bronze, and terracotta sculpture and painted vases on display originated in Athens and other major centers of the Greek world and from the great Pan-Hellenic sanctuaries of Olympia and Delphi. The exhibition has been selected from the permanent collections of four museums in Athens and a number of museums elsewhere in Greece.

After its showing at the National Gallery, the exhibition will travel to the Nelson-Atkins Museum of Art in Kansas City, Missouri (July 16-Oct. 2, 1988), the Los Angeles County Museum of Art (Nov. 13, 1988-Jan. 15, 1989), The Art Institute of Chicago (Feb. 18-May 7, 1989), and the Museum of Fine Arts, Boston (June 7-Sept. 3, 1989).

The exhibition, which has been organized by the National Gallery of Art and the Greek Ministry of Culture, is supported in part by The Paradina Inc. Trust and Joannou & Paraskevaides (Overseas) Ltd., and by an indemnity from the Federal Council on the Arts and the Humanities. The official airline carrier for the exhibition is Olympic Airways.

Special Film: A thirty-minute film, *Light of the Gods*, will be screened at scheduled times daily in the audiovisual theater adjoining the exhibition.



Black-Figure Siana Cup, c. 560 B.C., National Archaeological Museum, Athens © Greek Ministry of Culture

NATIONAL GALLERY OF ART
Washington, D.C. 20565

GENERAL INFORMATION

EXTENDED SUMMER HOURS

Monday through Saturday 10:00 to 9:00

Sunday noon to 9:00

The telephone number for general information
is (202) 737-4215.

To change your mailing address for the Calendar of Events,
please mail a copy of your new address to the Information
Office, National Gallery of Art, Washington, D.C. 20565,
taking care to include the mailing label from your last
Calendar of Events.

The Gallery is located between 3rd and 7th Streets, N.W.,
on Constitution Avenue. The East and West Buildings are
connected by an all-weather underground passage with a
moving walkway. Entrances to the West Building are on the
Mall, on 7th Street, on Constitution Avenue at 6th Street,
which has a ramp for the handicapped, and off 4th Street. The
entrance to the East Building is on 4th Street off National
Gallery Plaza and also has a ramp for the handicapped.

RESTAURANTS

Four restaurants offer luncheon and light snacks throughout
the year. Hours of operation from Monday through Saturday
are:

Terrace Café:	11:00 to 7:00
Concourse Buffet:	10:00 to 6:30
Cascade Café:	11:00 to 2:30 (lunch) 2:30 to 4:30 (ice cream service)
Garden Café:	11:00 to 4:30

Sunday hours are noon to 7:00 for the Terrace Café; noon to
6:30 for the Concourse Buffet; noon to 3:30 for the Cascade
Café; and noon to 7:30 for the Garden Café. The Garden Café
offers dinner service from 5:00 to 7:30.

COVER: Fitz Hugh Lane, *Boston Harbor at Sunset*,
1850-1855, Museum of Fine Arts, Boston,
M. and M. Karolik Collection by exchange