

**National Gallery of Art**  

---

**CALENDAR OF EVENTS**

*February 1987*

## FEBRUARY

Monday, January 26  
through  
Sunday, February 1

Monday, February 2  
through  
Sunday, February 8

Monday, February 9  
through  
Sunday, February 15

Monday, February 16  
through  
Sunday, February 22

### COLLECTION HIGHLIGHTS

Brief gallery talks given by Education Department lecturers on a single work of art. Reproductions of the work discussed may be purchased in the Gallery's sales shops; a written text is available without charge.

Tuesday through Saturday 12:00 p.m.  
Sunday 2:00 p.m.

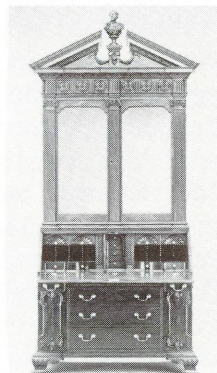
January 27-February 1

Pieter de Hooch  
*The Bedroom*  
(Widener Collection)  
West Building  
Gallery 49



February 3-February 8

Philadelphia  
*Desk and Bookcase*  
(On loan from the  
Kaufman Collection)  
West Building Ground Floor  
Central Gallery 7



February 10-February 15

Urbino  
*Plate with Scene  
of Hercules, Omphale  
and Cupid*  
(Widener Collection)  
West Building Ground Floor  
North Gallery 8



February 17-February 22

Eugène Boudin  
*Bathing Time at Deauville*  
(Collection of Mr. and  
Mrs. Paul Mellon)  
East Building  
Ground Floor



### SPECIAL TOURS

Fifty-minute tours by Education Department lecturers on related works of art.

Monday through Friday 11:00 a.m.

January 26-January 30

*American Furniture from  
the Kaufman Collection*  
West Building, Rotunda

February 2-February 6

*The Age of Sultan  
Süleyman the Magnificent*  
East Building  
Ground Floor Lobby

February 9-February 13

*Introduction to the West  
Building's Ground Floor  
Collections*  
West Building, Rotunda

February 16-February 20

*German Art in  
the Collection of the  
National Gallery of Art*  
West Building, Rotunda

One-hour thematic tours by Education Department lecturers.

Tuesday through Saturday 1:00 p.m.  
Sunday 2:30 p.m.

January 27-February 1

*Twentieth-Century  
Sculpture in the Collection  
of the National Gallery of Art*  
East Building  
Ground Floor Lobby

February 3-February 8

*Index of American Design:  
Furniture Renderings*  
West Building, Rotunda

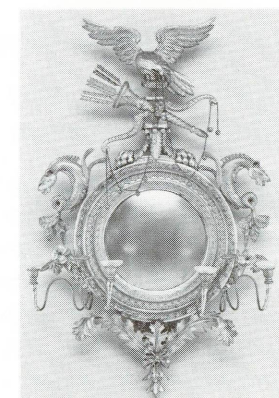
February 10-February 15

*Alexander Archipenko:  
A Centennial Tribute*  
East Building  
Ground Floor Lobby

February 17-February 22

*American Furniture from  
the Kaufman Collection*  
West Building, Rotunda

(There will be no tour on  
Feb. 16, Presidents' Day)



Convex Mirror, 1810-1825  
Collection of Linda H. and  
George M. Kaufman

### FILMS

Free films on art and feature films related to special exhibitions. Unreserved seats are available on a first-come, first-served basis.

East Building Auditorium

January 28-February 1

*Paul Cézanne and Claude  
Monet* (Kenneth Clark,  
1972, 80 min.)  
Wed. through Sat. 12:30  
Sun. 1:00

*The Eleventh Year* (Dziga  
Vertov, 1928, 70 min.)  
and *Turksib* (Viktor Turin,  
1929, 60 min.)  
Sat. 2:00  
Sun. 6:00

*Ballet Mécanique*, 1924, by Fernand  
Léger, from *The Cubist Cinema*,  
part 1, to be shown February 4-8  
(Museum of Modern Art/Film Stills  
Archive)

February 4-February 8

*The Cubist Cinema*, part 1  
(56 min.)  
Wed. through Sat. 12:30  
Sun. 1:00

*One Sixth of the World*  
(Dziga Vertov, 1926,  
66 min.); *Salt for Svanetia*  
(Mikhail Kalatozov, 1930,  
54 min.); *Land without  
Bread* (Luis Buñuel, 1933,  
27 min.)  
Sat. 2:00

*The Man in the Silk Hat*  
(Maud Linder, 1983,  
95 min.)  
Sun. 6:00

February 11-February 15

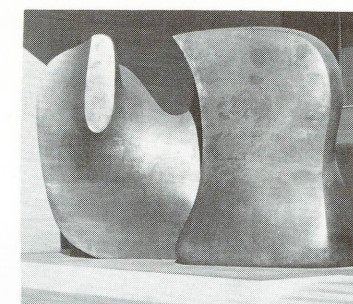
*The Cubist Cinema*, part 2  
(50 min.)  
Wed. through Sat. 12:30  
Sun. 1:00

*Enthusiasm* (Dziga Vertov,  
1930, 67 min.); *Castro Street*  
(Bruce Baillie, 1966,  
10 min.); *Le Gai Savoir*  
(Jean-Luc Godard,  
1968, 86 min.)  
Sat. 2:00

February 18-February 22

*Encounters in the Dark*  
(with Henry Moore, 1958,  
27 min.) and *Henry Moore,  
London 1940-1942* (11 min.)  
Wed. through Sat. 12:30  
Sun. 1:00

*Three Songs of Lenin*  
(Dziga Vertov, 1934,  
68 min.) and *Fall of the  
Romanov Dynasty* (Esther  
Shub, 1927, 101 min.)  
Sat. 2:00  
Sun. 6:00



Henry Moore, *Knife Edge Mirror  
Two Piece*, 1977/1978  
National Gallery of Art,  
Gift of the Morris and Gwendolyn  
Cafritz Foundation

### SUNDAY LECTURES

Free lectures given by distinguished scholars. No registration needed but seating is limited.

Sunday 4:00 p.m.  
East Building Auditorium

February 1

*The Age of Sultan Süleyman  
the Magnificent*

Esin Atıl  
Guest Curator  
*The Age of Sultan Süleyman  
the Magnificent*  
National Gallery of Art

February 8

*How Do We Know It's  
Really by Rembrandt?*

Arthur Wheelock  
Curator of Northern  
Baroque Painting  
National Gallery of Art

February 15

*Netherlandish Artists in  
Sixteenth-Century Venice*

Bert W. Meijer  
Director  
Dutch Institute for  
the History of Art  
Florence, Italy

February 22

*From the Quarry to the  
Church: Marble Carving  
in Baroque Rome*

Jennifer Montagu  
Curator of the  
Photograph Collection  
The Warburg Institute  
University of London  
London

### SUNDAY CONCERTS

Free concerts by the National Gallery Orchestra, recitalists, and ensembles. Unreserved seats available from 6:00 p.m. All concerts are broadcast live by WGMS 570 AM and 103.5 FM.

Sunday 7:00 p.m.  
West Building, West Garden Court

February 1

National Gallery Orchestra  
George Manos, *Conductor*

Works of Haydn, Mozart,  
Debussy, and Fauré

February 8

Selma Gokcen, *Cellist*  
Paul Tardiff, *Pianist*

Works of Boccherini,  
Beethoven, Mendelssohn,  
Tagart, and Chopin

February 15

National Gallery Strings  
George Manos, *Conductor*

Works of J. S. Bach

February 22

Ney Salgado, *Pianist*

Works of Chopin,  
Villa-Lobos, and  
Moussorgsky

### Special Course: The Arts in Europe and the Near East at the Time of Süleyman the Magnificent

This four-week series of free slide lectures will investigate the arts of 16th-century courts in Europe and Iran that were in contact with Sultan Süleyman. The talks will be given in the East Building Auditorium by staff members of the National Gallery on Mondays at 12:30 p.m. and repeated on Saturdays at 11:00 a.m. No reservation is required but space is limited.

February 16, 21 *Charles V and the Holy Roman Empire*  
February 23, 28 *Francis I of France*  
March 2, 7 *Shah Tahmasp and the Safavid Dynasty in Iran*  
March 9, 14 *The Papal and Secular States in Italy*

### Film Series: Dziga Vertov

Through February 22, 1987  
East Building Auditorium

Coinciding with the Archipenko exhibition, a program devoted to the Soviet filmmaker Dziga Vertov continues through February 22. The series has been organized by Annette Michelson, a senior fellow in the Center for Advanced Study in the Visual Arts. Vertov was the preeminent documentary filmmaker and theorist of the Russian revolutionary generation. Throughout his career, he was affected by ideas that emerged from his association with the futurist and constructivist avant-garde. The rare archival prints in this series are furnished by Anthology Film Archives.



Guercino, *Amnon and Tamar*, 1649-1650  
National Gallery of Art, Patrons' Permanent Fund

### INTRODUCTORY TOURS

#### Introduction to the East Building Collections

Monday through Saturday 11:00 a.m.  
Sunday 1:00 p.m.  
East Building, Ground Floor Lobby

#### Introduction to the West Building Collections

Monday through Saturday 3:00 p.m.  
Sunday 5:00 p.m.  
West Building, Rotunda



Zinc Jug with Lid, mid-16th century  
Topkapı Palace Museum, Istanbul

### Family Programs

The Education Department continues its series of programs for families with children ages 6-12. Featured this month is life and art in 18th- and 19th-century America. Participants are asked to meet in the West Building Auditorium at 10:00 a.m. each Saturday for a short activity to be followed by a tour of American paintings and *American Furniture from the Kaufman Collection*. The free program lasts an hour and a half. Children must be accompanied by an adult. Please call (202) 842-6249 for reservations.

### Acquisitions Announced

The National Gallery of Art has acquired three baroque paintings which are included in the exhibition *The Age of Correggio and the Carracci: Emilian Painting of the 16th and 17th Centuries*. The paintings are *Joseph and Potiphar's Wife* and its pendant *Amnon and Tamar* (1649-1650) by Giovanni Francesco Barbieri, known as Guercino, and *God the Father* (c. 1650) by Francesco Albani. Both Guercino and Albani were influenced by Carracci, who introduced stylistic changes in paintings around the year 1600. The acquisition of these works will significantly enrich the National Gallery's collection of baroque paintings, which prior to this included one Guercino portrait, and no works by Albani.

### FOREIGN LANGUAGE TOURS

Regularly scheduled foreign language tours of the West Building are offered on Tuesdays at noon beginning in the Rotunda. The February schedule is as follows:

February 3 *French*  
February 10 *Spanish*  
February 17 *German*  
February 24 *Italian*

## CONTINUING EXHIBITIONS

### Henri Matisse: The Early Years in Nice 1916-1930

Through March 29, 1987  
East Building  
Mezzanine and Upper Levels

This is the first exhibition devoted exclusively to paintings by the 20th-century master Henri Matisse from the period between 1916 and 1930 when he lived and worked in the south of France. Intense light, interior decor, and most important, the people and the brilliant color of the setting provide the dominant themes that characterize this period of the artist's career. In Nice, the artist took up the challenge of representation within the format of easel painting. The move from his earlier works to these more figurative paintings has been confusing to art critics, and this exhibition offers a rare opportunity to reassess the quality of Matisse's continued invention.

Featured in the exhibition are several thematic series of pictures brought together for the first time since they were painted. *Henri Matisse* includes 166 works, about one third of which have seldom or never been on

### American Furniture from the Kaufman Collection

Through April 19, 1987  
West Building, Ground Floor

American furniture dating from the pre-Revolutionary period to the mid-19th century remains on view in the West Building's Ground Floor Galleries through April 19. This exhibition of more than 100 examples of furniture from the major regional style centers of Boston, New York, Philadelphia, Newport, and Charleston marks the first time a selection of American furniture from one private collection is on view at the National Gallery of Art. The exhibition reveals the wide range and high quality of this exceptional collection, and traces the stylistic trends of 18th- and early 19th-century America.

**Recorded Tour.** A forty-five minute recorded tour of the exhibition, narrated by J. Carter Brown, director of the National Gallery, is available: individuals \$3.00 each; students or senior citizens, \$2.50 each.

### The Age of Sultan Süleyman the Magnificent

Through May 17, 1987  
East Building, Upper Level

*The Age of Sultan Süleyman the Magnificent* is the first major U.S. exhibition of treasures from the Golden Age of the Ottoman Empire. The exhibition represents the first time in more than 20 years that Turkish art has traveled to the United States. It includes more than 210 objects: illustrated manuscripts, drawings, and paintings; imperial items made of silver, gold, jade, and rock crystal embellished with gems; kaftans, textiles, embroideries, and rugs; inlaid woodwork, ceramics, and tiles. Although objects are being loaned from European and American public and private collections, the largest lender to the exhibition is the celebrated Topkapı Palace Museum in Istanbul which served as Süleyman's administrative center and residence.

The exhibition presents the highest

public view. The exhibition, which will be seen only at the National Gallery of Art, is supported by an indemnity from the Federal Council on the Arts and the Humanities and has been made possible by a grant from the GTE Corporation.

**Pass System.** On crowded weekdays and weekends, free passes will be distributed if necessary on a first-come, first-served basis. Passes are for specified half-hour entry times and may be obtained at the special exhibition desk on the Ground Floor of the East Building. There are no advance reservations.

**Recorded Tour.** A forty-five minute recorded tour of the exhibition, narrated by J. Carter Brown, director of the National Gallery, is available: individuals \$3.00 each; students or senior citizens, \$2.50 each.

**Recorded Information.** Current information on the *Matisse* exhibition is available by calling (202) 842-3472.



Side Chair, 1795-1800  
Collection of Linda H. and George M. Kaufman

aesthetic and technical achievement of the Ottoman Empire during the reign of Sultan Süleyman I (1520-1566). Known in Turkey as "Kanuni," or "Lawgiver," in reference to his exemplary judicial acts which contributed to many Western constitutional laws, the sultan was a renowned legislator, statesman, poet, and generous patron of the arts. Highlighted are such Turkish national treasures as an inlaid wooden throne, a unique map of the Americas made in 1513, the illustrated history of the Sultan's reign, illuminated copies of his collected poems, and personal items including Süleyman's kaftans and swords.

The exhibition is made possible by Philip Morris Companies Inc. and is supported by an indemnity from the Federal Council on the Arts and the Humanities.

## CLOSING EXHIBITIONS

### The Age of Correggio and the Carracci: Emilian Painting of the 16th and 17th Centuries

Through February 16, 1987  
West Building, Main Floor

This exhibition, the most comprehensive ever assembled of paintings from the Italian region of Emilia during the 16th and 17th centuries, features nearly 200 paintings by 50 artists from the principal artistic centers of Parma, Ferrara, and Bologna. *The Age of Correggio and the Carracci* focuses on the stylistic changes brought about by the Carracci family around 1600 and places these innovations in the context of what came before and after this important turning point in the history of Western art. Included in the exhibition are paintings by such well-known masters as Correggio, Parmigianino, Guercino, Domenichino, and Guido Reni, as well as numerous works by the Carracci family.

The exhibition has been organized in collaboration with the Pinacoteca Nazionale in Bologna and The Metropolitan Museum of Art in New York. *The Age of Correggio and the Carracci* is supported by an indemnity from the Federal Council on the Arts and the Humanities and has been made possible in part by Alitalia, The Montedison Group, and the Italian-American Cultural Foundation.

### Alexander Archipenko: A Centennial Tribute

Through February 16, 1987  
East Building, Concourse Level

This exhibition commemorates the 100th anniversary of the birth of Alexander Archipenko (1887-1964) and features an important body of work representing Archipenko's early career from the collection of the Tel Aviv Museum, co-organizer of the exhibition. A leading figure of the cubist movement, Archipenko is known for his revolutionary approach to form, material, and color. By merging painting with three-dimensional construction, he produced

## SPECIAL INSTALLATIONS

### American Paintings from the National Gallery of Art

Through April 19, 1987  
West Building, Ground Floor

This special installation, arranged by subject matter, highlights the Gallery's holdings in late 18th- through early 20th-century American painting.

### American Prints and Drawings: Selections from the Permanent Collection

Through March 27, 1987  
West Building, Ground Floor

This exhibition features selections of American drawings and prints from the 18th through the 20th centuries, organized chronologically. Demonstrating the great range in subjects of interest to American artists, the themes include current events, landscape views, religious works, portraits, genre scenes, and non-figurative compositions by more than 70 artists.



Guido Reni, *Holy Family with Saint Elizabeth and Saint John the Baptist*, 1640-1642  
Private Collection, New York

**Recorded Tour.** A forty-five minute recorded tour of the exhibition, narrated by Beverly Brown, curator of southern baroque paintings at the National Gallery, is available: individuals \$3.00 each; students or senior citizens, \$2.50 each.

works that embraced not only the visual influences of cubism, but also those of Italian futurism and classical sculpture. His methods of opening up the plastic form with holes and concavities created a new idiom in modern sculpture.

The exhibition will travel to the Tel Aviv Museum (March 12-June 13, 1987) and is supported by an indemnity from the Federal Council on the Arts and the Humanities.



Martin Johnson Heade, *Cattleya Orchid and Three Brazilian Hummingbirds*, 1871  
National Gallery of Art, Gift of the Morris and Gwendolyn Cafritz Foundation

### Index of American Design: Furniture Renderings

Through March 22, 1987  
West Building, Ground Floor

These furniture renderings, depicting chairs, tables, chests of drawers, and clocks, were selected from approximately 1,700 in this subject category.

# GENERAL INFORMATION

## NATIONAL GALLERY OF ART

Washington, D.C. 20565

The telephone number for general information is 202-737-4215.

To change your mailing address for the Calendar of Events, please mail a copy of your new address to the Information Office, National Gallery of Art, Washington, D.C. 20565, taking care to include the mailing label from your last Calendar of Events.

### GALLERY HOURS:

Monday through Saturday 10:00 a.m. to 5:00 p.m.

Sunday noon to 9:00 p.m.

The Gallery is located between 3rd and 7th Streets, N.W., on Constitution Avenue. The East and West Buildings are connected by an all-weather underground passage with a moving walkway. Entrances to the West Building are on the Mall, on 7th Street, on Constitution Avenue at 6th Street, which has a ramp for the handicapped, and off 4th Street. The entrance to the East Building is on 4th Street off National Gallery Plaza and also has a ramp for the handicapped.

### RESTAURANTS

Four restaurants offer luncheon and light snacks throughout the year. Monday through Saturday, hours of operation are:

Terrace Café: 11:00 to 4:30

Café/Buffer: 10:00 to 3:30

Cascade Café: 11:00 to 3:30

Garden Café: 11:00 to 4:30

Sunday hours are noon to 6:00 p.m. for the Terrace Café, Café/Buffer, and Garden Café; noon to 4:30 p.m. for the Cascade Café.

COVER: Alexander Archipenko, *Queen* (two views), 1954  
Frances Archipenko Gray