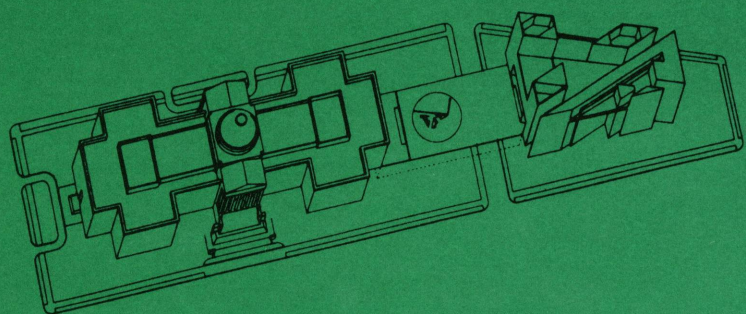




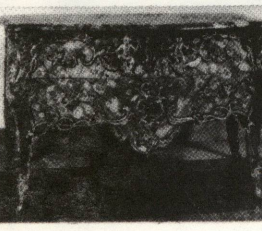

# National Gallery of Art

Washington, D.C. 20565

Official Business  
Penalty for Private Use, \$300



## Calendar of Events May 1984

	Tours and Paintings of the Week	Introductory Tours	Films	Sunday Lectures	Sunday Concerts
<b>MONDAY, April 30 through SUNDAY, May 6</b>  	<p><i>Changing Images of Women in Modern Art</i> Tues. through Sat. 1:00 Sun. 2:30 East Building Ground Floor Lobby</p> <p>Rembrandt van Ryn <i>A Polish Nobleman</i> (Andrew W. Mellon Collection) Tues. through Sat. 12:00 &amp; 2:00; Sun. 3:30 &amp; 6:00 West Building Gallery 48</p>	<p><i>Introduction to the East Building's Collection</i> Mon. through Sat. 11:00 Sun. 1:00 East Building Ground Floor Lobby</p> <p><i>Introduction to the West Building's Collection</i> Mon. through Sat. 3:00 Sun. 5:00 West Building Rotunda</p>	<p><i>Antelami, the Baptistry of Parma</i> (17 min.) and <i>The Birth of European Painting</i> (26 min.) Tues. through Fri. 12:30 Sun. 1:00</p> <p><i>Mark Tobey</i> (20 min.) and <i>Mark Tobey Abroad</i> (30 min.), introduced by the filmmaker Robert Gardner Sat. 12:30</p> <p><i>Le Testament d'Orphée</i> (by Jean Cocteau, 1959, 83 min.) Sat. 2:30</p> <p>East Building Auditorium</p>	<p><i>Fourteenth-Century Altarpieces for the Sienese Cathedral</i></p> <p><i>Speaker:</i> Hendrik W. van Os Professor of Art History The National University Groningen The Netherlands</p> <p>Sunday 4:00</p> <p>East Building Auditorium</p>	<p>41st American Music Festival</p> <p>The Manchester String Quartet</p> <p>West Building East Garden Court 7:00</p>
<b>MONDAY, May 7 through SUNDAY, May 13</b>  	<p><i>American Pop Art</i> Tues. through Sat. 1:00 Sun. 2:30 East Building Ground Floor Lobby</p> <p>Beauvais Tapestry After François Boucher <i>The Dream of Rinaldo</i> (Widener Collection) Tues. through Sat. 12:00 &amp; 2:00; Sun. 3:30 &amp; 6:00 West Building Ground Floor North 14C</p>	<p><i>Introduction to the East Building's Collection</i> Mon. through Sat. 11:00 Sun. 1:00 East Building Ground Floor Lobby</p> <p><i>Introduction to the West Building's Collection</i> Mon. through Sat. 3:00 Sun. 5:00 West Building Rotunda</p>	<p><i>Cathedral, City, School</i> (medieval art and architecture, 52 min.) Tues. through Sat. 12:30 Sun. 1:00</p> <p><i>Les Parents Terribles</i> (by Jean Cocteau, 1949, unsubtitled, 86 min.) Sat. 2:30</p> <p>East Building Auditorium</p>	<p><i>Two Sides of Winslow Homer: Public Hope and Private Despair</i></p> <p><i>Speaker:</i> Nicolai Cikovsky, Jr. Curator of American Art National Gallery of Art</p> <p>Sunday 4:00</p> <p>East Building Auditorium</p>	<p>41st American Music Festival</p> <p>Musikanten Kerry Krebill, <i>Director</i></p> <p>West Building East Garden Court 7:00</p>
<b>MONDAY, May 14 through SUNDAY, May 20</b>  	<p><i>Mark Rothko: Works on Paper</i> Tues. through Sat. 1:00 Sun. 2:30 East Building Ground Floor Lobby</p> <p>Jean-Mathieu Chevallier <i>Commode with Chinese Motifs</i> (Widener Collection) Tues. through Sat. 12:00 &amp; 2:00; Sun. 3:30 &amp; 6:00 West Building Ground Floor North 14B</p>	<p><i>Introduction to the East Building's Collection</i> Mon. through Sat. 11:00 Sun. 1:00 East Building Ground Floor Lobby</p> <p><i>Introduction to the West Building's Collection</i> Mon. through Sat. 3:00 Sun. 5:00 West Building Rotunda</p>	<p><i>Mark Tobey</i> (20 min.) and <i>Mark Tobey Abroad</i> (30 min.) Tues. through Sat. 12:30 Sun. 1:00</p> <p><i>Les Enfants Terribles</i> (by Jean Cocteau and Jean-Pierre Melville, 1950, 106 min.), introduced by Madeleine Cottenet-Hage Sat. 2:30</p> <p>East Building Auditorium</p>	<p><i>Conservation of Museum Collections</i></p> <p><i>Speaker:</i> Ross M. Merrill Chief of Conservation National Gallery of Art</p> <p>Sunday 4:00</p> <p>East Building Auditorium</p>	<p>41st American Music Festival</p> <p>National Gallery Orchestra Richard Bales, <i>Conductor</i></p> <p>William Montgomery, <i>Flute Soloist</i></p> <p>West Building East Garden Court 7:00</p>
<b>MONDAY, May 21 through SUNDAY, May 27</b>  	<p><i>Mark Tobey</i> Tues. through Sat. 1:00 Sun. 2:30 East Building Ground Floor Lobby</p> <p>French School (after Bernini) <i>Louis XIV</i> (Samuel H. Kress Collection) Tues. through Sat. 12:00 &amp; 2:00; Sun. 3:30 &amp; 6:00 West Building West Sculpture Hall</p>	<p><i>Introduction to the East Building's Collection</i> Mon. through Sat. 11:00 Sun. 1:00 East Building Ground Floor Lobby</p> <p><i>Introduction to the West Building's Collection</i> Mon. through Sat. 3:00 Sun. 5:00 West Building Rotunda</p>	<p><i>View from the Edge</i> (history of expressionism, from series <i>Shock of the New</i>, 52 min.) Tues. through Sat. 12:30 Sun. 1:00</p> <p><i>L'Eternel Retour</i> (by Jean Cocteau and Jean Delannoy, 1943, 100 min.) Sat. 2:30</p> <p>East Building Auditorium</p>	<p><i>Claude Monet: Painting, Progress, and Patriotism</i></p> <p><i>Speaker:</i> Paul Hayes Tucker Professor of Art History University of Massachusetts Boston</p> <p>Sunday 4:00</p> <p>East Building Auditorium</p>	<p>41st American Music Festival</p> <p>National Gallery Orchestra Richard Bales, <i>Conductor</i></p> <p>West Building East Garden Court 7:00</p>



# National Gallery of Art

Washington, D.C. 20565

The telephone number for general information is (202) 737-4215.

## Films in the East Building Auditorium

The retrospective of films by the noted French poet, dramatist, and artist Jean Cocteau continues on consecutive Saturdays through June 2. Included are films which Cocteau directed or wrote, as well as adaptations of his plays by other filmmakers. Dr. Madeleine Cottenet-Hage of the University of Maryland's French department will introduce the program on May 19.

On May 5, Robert Gardner, Director of the Carpenter Center for the Visual Arts at Harvard University, will introduce his two films on Mark Tobey.

See reverse side for further details.

*Gallery Hours:* The Gallery is open 10 a.m. to 5 p.m. Monday through Saturday. Sunday hours remain the same throughout the year: 12 noon to 9 p.m.

The Gallery is located between 3rd and 7th Streets, N.W., on Constitution Avenue. The East and West Buildings are connected by an all-weather underground passage with a moving walkway. Entrances to the West Building are on the Mall, on 7th Street, on Constitution Avenue at 6th Street, which has a ramp for the handicapped, and off 4th Street. The entrance to the East Building is on 4th Street off National Gallery Plaza and also has a ramp for the handicapped.

Free tours on any subject appropriate to the Gallery's collections or exhibitions may be arranged for groups of fifteen or more people by booking at least two weeks in advance. Call (202) 842-6246.

## Exhibitions May 1984

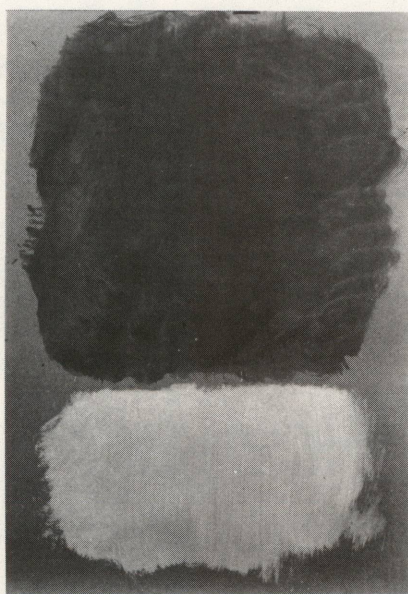
### Opening This Month

#### Mark Rothko: Works on Paper

May 6-August 5, 1984  
Mezzanine Level  
East Building

Eighty-six works, dating from the late 1920s through 1970, the year of Rothko's death, represent the first comprehensive survey of this major American artist's works on paper. Highlights include the generally unknown paintings on paper of the late sixties. In contrast to Rothko's well-known paintings in somber hues of brown, black, and gray, these last pictures continued to radiate with the high-keyed pigments of the fifties.

In her accompanying catalogue, curator Bonnie Clearwater of The Mark Rothko Foundation reevaluates the prevailing view that the late works on canvas and paper



ROTHKO. *Untitled*  
The Mark Rothko Foundation, Inc., 1982

reflect a depressed emotional state which resulted in the artist's suicide. The catalogue also contains an essay by Dore Ashton, noted art historian and Rothko expert.

The exhibition has been coorganized by The American Federation of Arts and The Mark Rothko Foundation, under the curatorial direction of Ms. Clearwater, Foundation Curator. It is made possible by a generous grant from Warner Communications Inc.

The Tour of the Week for May 14-May 20 will be devoted to this exhibition; see reverse side for details.

#### Early German Drawings from a Private Collection

May 27-July 8, 1984  
Ground Floor Galleries  
West Building

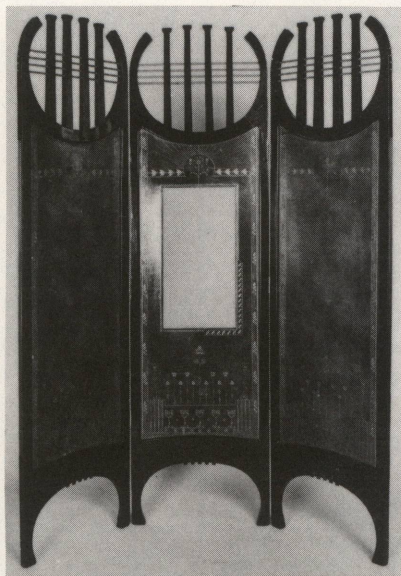
The drawings selected for this exhibition include examples by early German masters such as Albrecht Dürer, Hans Baldung Grien, Martin Schongauer, Lucas Cranach the Elder, and Hans Burgkmair, as well as important but lesser-known artists such as Hans Weiditz, Jörg Breu, Ludwig Refinger, and Tobias Stimmer. The collection ranges in date from an extraordinary *Christ Carrying the Cross* by a Viennese master of c.1410 through drawings of the eighteenth century.



HANS BALDUNG GRIEN  
*The Virgin on the Crescent Moon*  
Private collection

Also on view are several related works from the collection of the British Museum, and a number of drawings from the National Gallery collection. Because of the extreme rarity of early German drawings in this country, the exhibition is a most unusual opportunity for Americans to see a survey of the draftsmen of the period. The catalogue was written by John Rowlands, Keeper of Prints and Drawings at the British Museum, where this exhibition was on view from February 9-April 29, 1984. The selection and additions for the National Gallery showing were made by Andrew Robison, Curator of Prints and Drawings and Senior Curator at the Gallery. The exhibition will subsequently be seen at the Germanisches Nationalmuseum in Nuremberg (August 2-September 23, 1984).

### Continuing Exhibitions



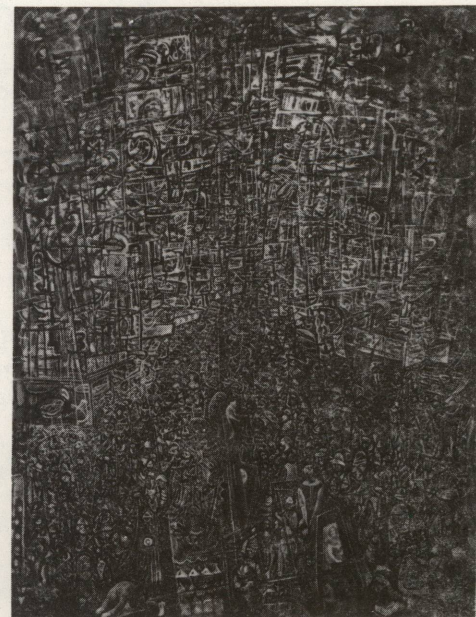
JOSEF HOFFMANN. *Three-panel Screen*  
Art Gallery and Museums and the Royal Pavilion, Brighton

#### The Folding Image: Screens by Western Artists of the 19th and 20th Centuries

Through September 3, 1984  
Concourse Level  
East Building

#### Mark Tobey: City Paintings

Through June 17, 1984  
Ground Level  
East Building



TOBEY. *Electric Night*  
Seattle Art Museum, Eugene Fuller Memorial Collection

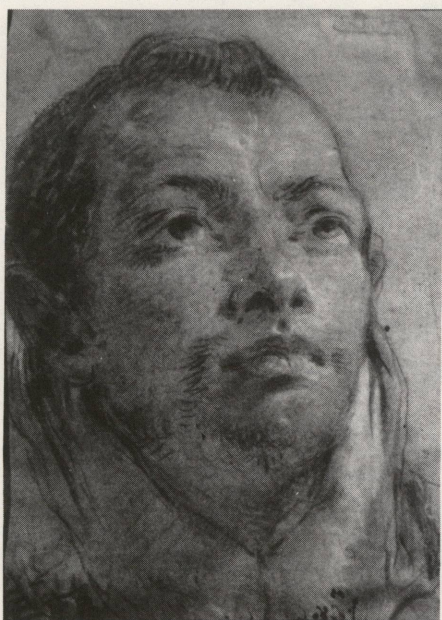
### Closing Exhibitions

#### Correggio and His Legacy: 16th-Century Emilian Drawings

Through May 13, 1984  
Ground Floor Galleries  
West Building

#### Master Drawings from the Woodner Collection

Through May 6, 1984  
Ground Floor Galleries  
West Building



TIEPOLO. *Head of a Young Man*  
Ian Woodner Collection



NICOLO DELL'ABATE. *Saint Paul*  
Cabinet des dessins, Musée du Louvre, Paris